



PM ESTATES

Property Sales & Lettings



Ashdale

Bishops Stortford, Hertfordshire, CM23 4EA

£1,250_{PCM}

www.pm-estates.co.uk

Ashdale

Bishops Stortford, Hertfordshire, CM23 4EA

Overview

- Mid-Terraced House
- One Double Bedroom
- Fully Fitted Kitchen
- Integrated Appliances Inclusive of Dishwasher
- Open-Plan Living Area
- Family Sized Bathroom
- Private Driveway
- Offered Unfurnished
- Popular Thorley Development
- Energy Rating: D
- Council Tax Band: C



Description

PM Estates are pleased to introduce to the rental market, this one-bedroom mid terraced house within the popular road of Ashdale, within Thorley, Bishops Stortford. The property is located just 1.4 miles from the town centre of Bishops Stortford, which offers direct services into Stansted Airport, Cambridge City Centre and London Liverpool Street, there are also Bus Links local to the property - lending itself to city commuters and airport workers alike.

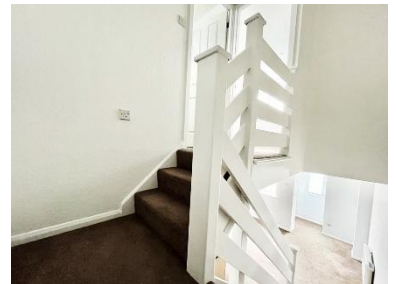
This unfurnished house has a generously sized open-plan living area, completed with a modern styled wooden kitchen complete with appliances such as a washing machine, dishwasher, full size fridge freezer, oven and hob, with modern laminate worktops and fixtures with an adjoining breakfast bar.

The tiled bathroom is complete with both bath and showering facilities, and the double sized bedroom is located just along the adjacent hallway with two large windows overlooking the front garden area: allowing for an abundance of natural light to flow freely through the room.

The property also benefits from a large front garden area and driveway, as well as access to a surplus of parking bays even at peak times of the day with various visitor parking options within the development.

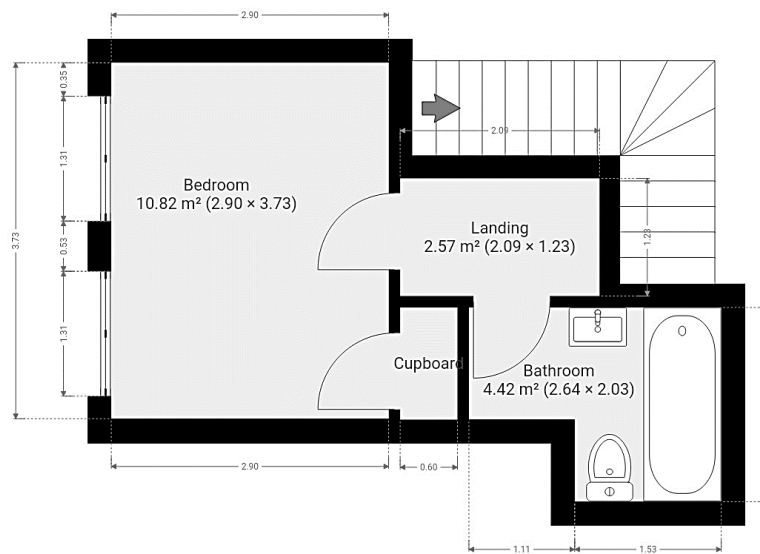
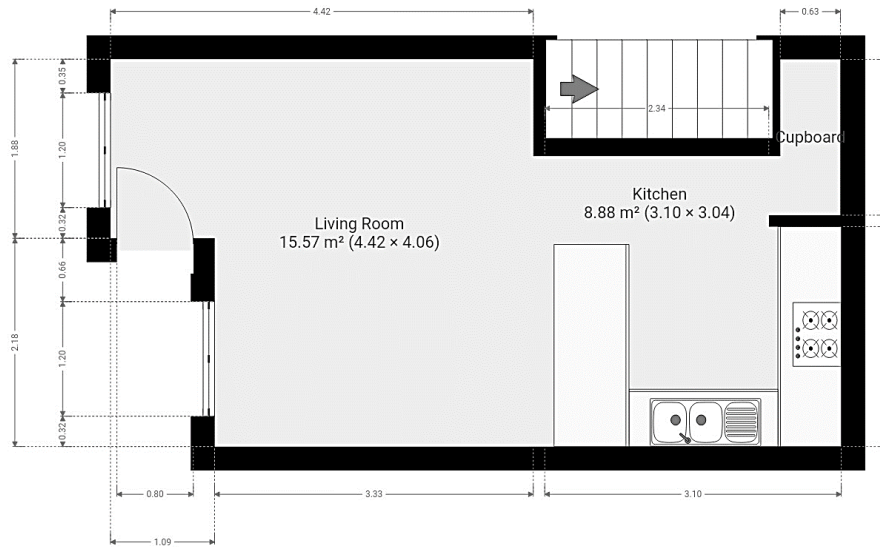
This property is well situated and within walking distance from many of the town's local amenities, including notable establishments such as the Sainsburys Superstore as well as the Harvest Moon Pub within just a 10-minutes' walk from the development itself we don't predict that this will be around for long.

Call us today on 01279 654646 to avoid disappointment!



Score	Energy rating	Current	Potential
92+	A		95 A
81-91	B		
69-80	C		
55-68	D	62 D	
39-54	E		
21-38	F		
1-20	G		

Floor Plan



7 Riverside Walk, South Street, Bishop's Stortford, Herts CM23 3AG

Tel: 01279 654646

Email: info@pm-estates.co.uk

www.pm-estates.co.uk

PM Estates wish to advise prospective purchasers that we have not checked the services or appliances. The sales particulars have been prepared as a guide only; any floor-plan or map is for illustrative purposes only. PM Estates, for themselves and for the vendors or lessors of this property whose agents they are give notice that: the particulars have been produced in good faith; do not constitute any part of a contract; no person in the employment of PM Estates has any authority to make or give any representation of warranty in relation to this property.

P820