



PM ESTATES

Property Sales & Lettings



Hockerill Court

Bishops Stortford, Hertfordshire, CM23 5SB

£1,100_{PCM}

www.pm-estates.co.uk

Hockerill Court

Bishops Stortford, Hertfordshire, CM23 5SB

Overview

- One Bedroom Apartment
- Fully Fitted Kitchen
- Integrated Appliances
- Open-Plan Lounge Area
- Family Sized Tiled Bathroom
- Offered Furnished
- Town Centre Location
- Walking Distance to the Station
- Allocated Parking Available
- Energy Rating: C
- Council Tax Band: B



Description

PM Estates are pleased to introduce this spacious one bedroom apartment offered furnished to the rental market and situated within the popular Hockerill Court development just off the town centre of Bishops Stortford itself.

The property comprises of a generously sized living area with ample space for both a lounge and dining area with feature picture window overlooking the communal gardens below.

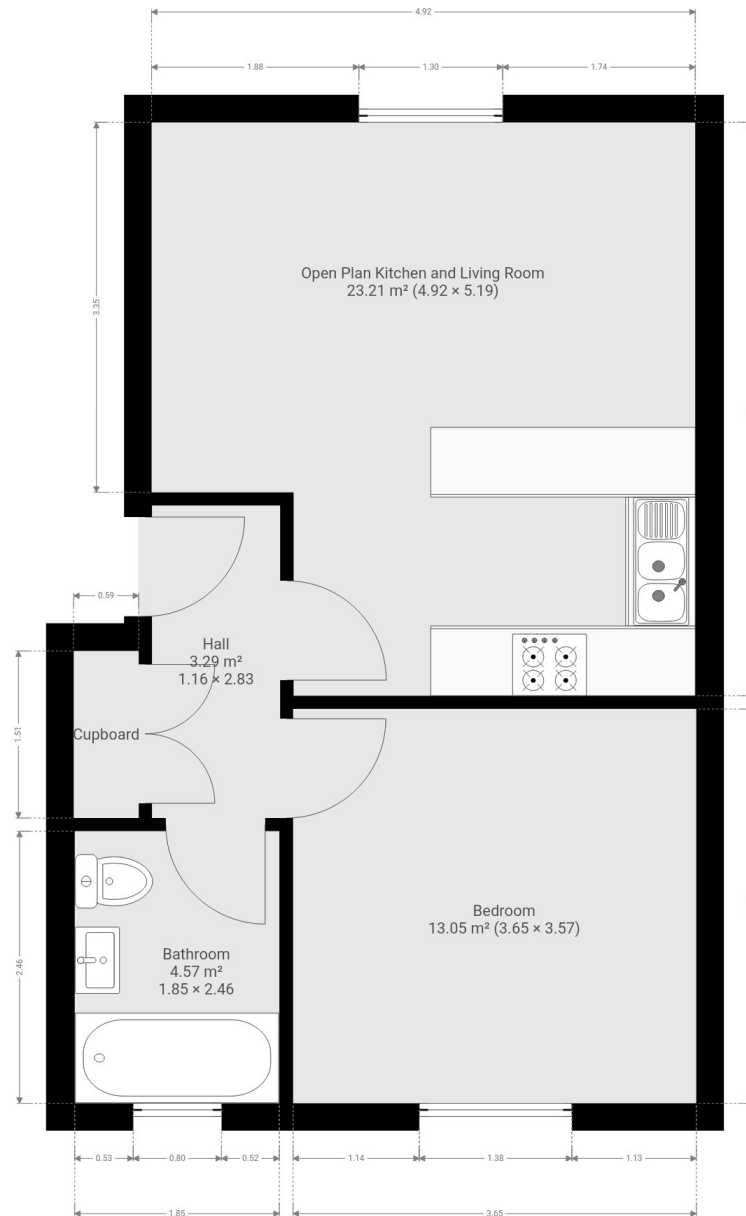
Following on from the living area you will be greeted by a fitted kitchen area with integrated appliances and a freestanding fridge/ freezer. The property is also home to a family sized tiled bathroom complete with both bath and shower facilities. The bedroom is double in size with ample space for furnishings. The development also benefits from allocated parking available.

Hockerill Court is located just a stone's throw away from many of the town's most popular amenities inclusive of the M&S Food Hall, the Nuffield Health Gym Complex & Spa to name but a few. The development is also located within 0.2 miles of the mainline rail station offering direct services into London Liverpool Street, Stansted Airport and Cambridge City Centre - lending itself to single professionals and couples alike.



Score	Energy rating	Current	Potential
92+	A		
81-91	B		
69-80	C	70 c	72 c
55-68	D		
39-54	E		
21-38	F		
1-20	G		

Floor Plan



7 Riverside Walk, South Street, Bishop's Stortford, Herts CM23 3AG

Tel: 01279 654646

Email: info@pm-estates.co.uk

www.pm-estates.co.uk

PM Estates wish to advise prospective purchasers that we have not checked the services or appliances. The sales particulars have been prepared as a guide only; any floor-plan or map is for illustrative purposes only. PM Estates, for themselves and for the vendors or lessors of this property whose agents they are give notice that: the particulars have been produced in good faith; do not constitute any part of a contract; no person in the employment of PM Estates has any authority to make or give any representation of warranty in relation to this property.

p820