



# PM ESTATES

Property Sales & Lettings



**St Stephens Court**  
Silver Street, Stansted, CM24 8GA

**£1,350PCM**

[www.pm-estates.co.uk](http://www.pm-estates.co.uk)



# St Stephens Court

Silver Street, Stansted, CM24 8GA

## Overview

- Ground Floor Apartment
- Modern Interior Design
- Two Double Bedrooms
- Open-Plan Living Area
- Fitted Kitchen with Integrated Appliances
- Family Sized Tiled Bathroom
- En-Suite Shower Room
- Access to Communal Gardens
- Offered Unfurnished
- Close to Local Amenities
- Energy Rating C
- Council Tax Band D



## Description

PM Estates are pleased to introduce this spacious two-bedroom ground floor apartment, situated within the prestigious St Stephens Court development in the historic village of Stansted Mountfitchet. This home is available now on the rental market with viewings available upon request.

Immaculately presented throughout, the apartment is inclusive of generously sized open plan living/ kitchen area which benefits from a sleek modern interior throughout. The kitchen area is home to integrated appliances and sleek speckle effect worktops. The reception area here also benefits from direct access to the properties exterior which only serves to further amplify the open, light and airy ambience which flows throughout the room.

Both bedrooms on offer here are double in size with the master leading onto its very own private en-suite bathroom. The apartment also benefits from a large, tiled family sized bathroom with both bath and shower facilities within.

The St Stephens Court development truly has stood the test of time and has proven to only increase in its popularity among both tenants and owner occupiers alike whereby the development is just a stone's throw away from various local amenities inclusive of the widely renowned Linden House Guest House as well as having a Tesco Express on Silver Street itself. St Stephens Court is also just 1.6 miles from the Forrest Hall School. The mainline rail station is also just an 8-minute walk away offering direct services to London Liverpool Street and Stansted Airport making this stunning apartment a perfect choice for families and single professionals alike.

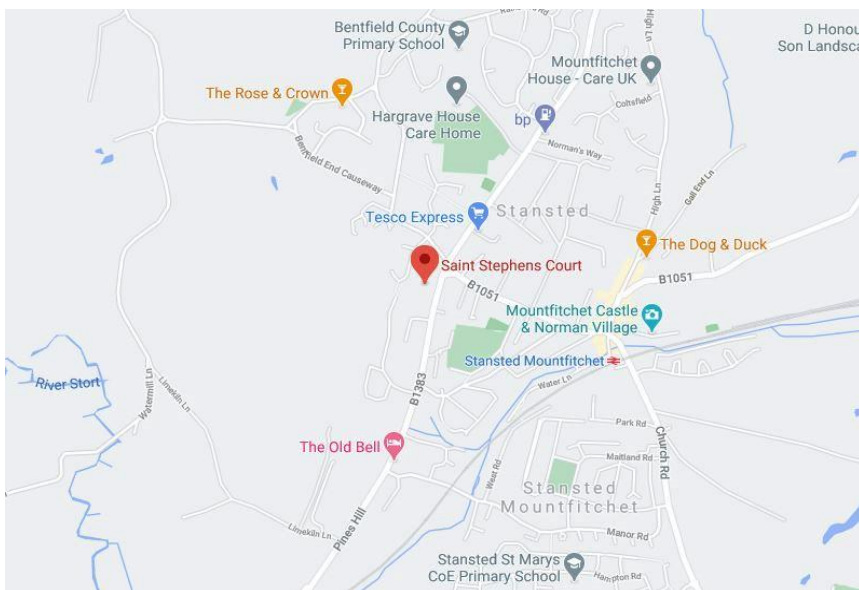
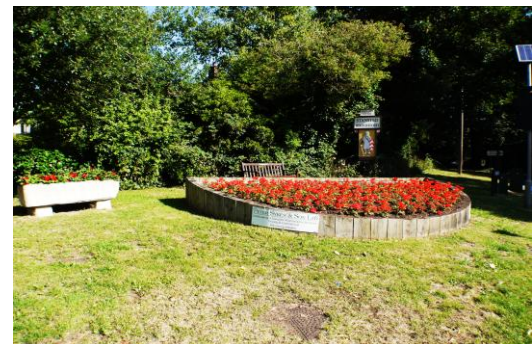


Score	Energy rating	Current	Potential
92+	A		
81-91	B		
69-80	C	80 C	80 C
55-68	D		
39-54	E		
21-38	F		
1-20	G		



Stansted Mountfitchet is a historic village that dates back to the Roman era. It is recognized by its large windmill, which can be seen throughout Stansted and was constructed in 1878. Most famously known for London's Stansted Airport, which is one stop away on the train, or just a 10-minute bus journey. Despite the close proximity to the airport, Stansted is one of the only places within the surrounding area that has no flight paths, enhancing its quiet and picturesque village atmosphere.

The village has grown larger in size over recent years and is becoming an ever-popular location for families and commuters alike, as its fantastic transport links are complemented by its quaint shops and boutiques. The appeal is enhanced as Stansted is only 3 miles from the market town of Bishop's Stortford which offers a large indoor shopping centre, many restaurants and bars and a weekly market within its high street, encapsulation and promoting the areas historical roots.

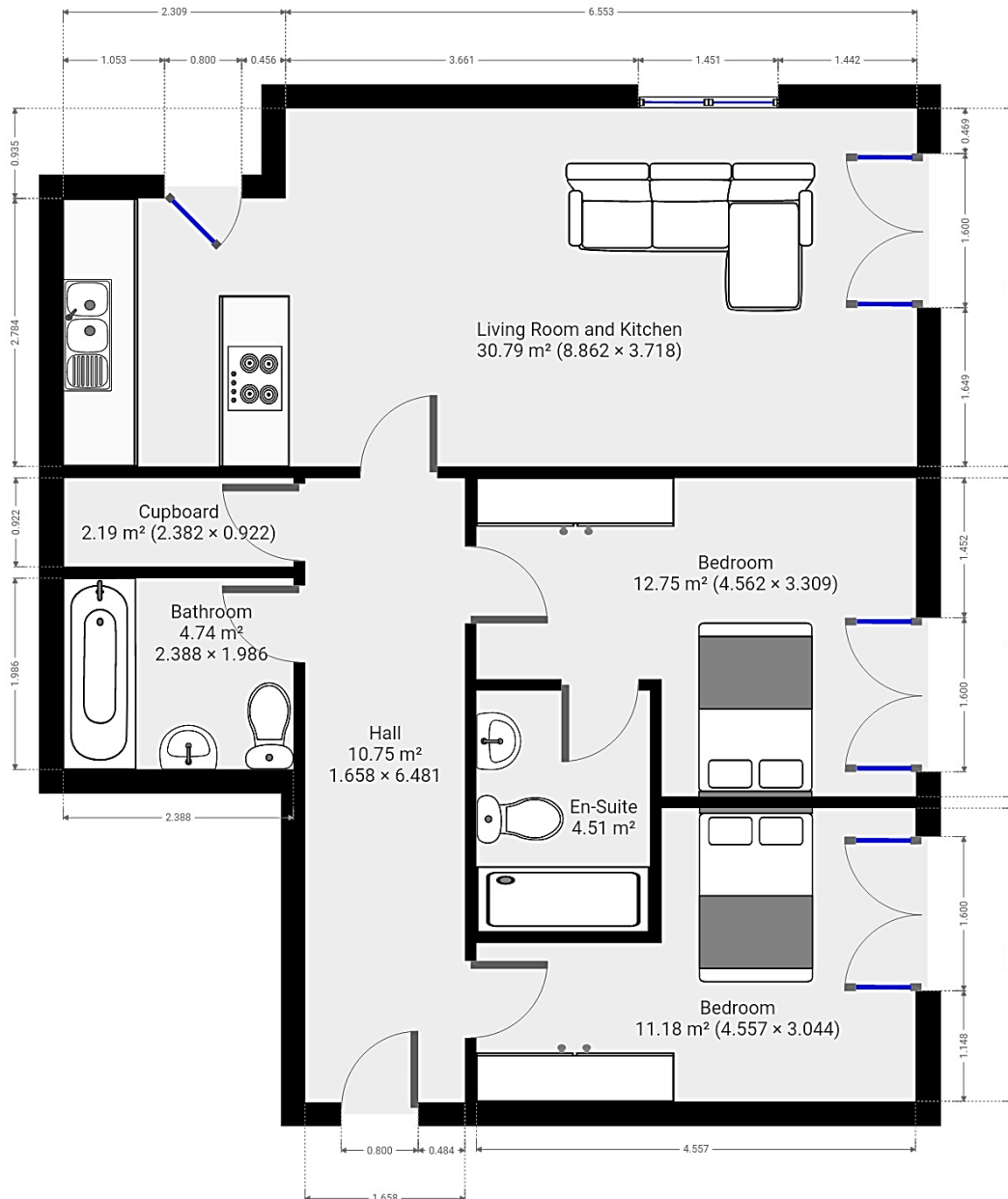


## Directions

From our office:

- Turn right on Adderley Road (A1059)
- At the traffic lights, turn right onto the causeway (A1250).
- At the roundabout, take the first exit to continue straight on Hockerill Street.
- At Hockerill Street traffic lights, turn left on to Stansted Road (B1383) continue straight for 1.3 miles.
- At the roundabout, take the second exit to continue on Stansted Road for 1.4 miles.
- Upon entering Stansted, you will see the Cock Inn Pub to your left, St Stephens Court is located directly after the pub entrance, opposite Lindon House Hotel.

# Floor Plan



7 Riverside Walk, South Street, Bishop's Stortford, Herts CM23 3AG

Tel: 01279 654646

Email: [info@pm-estates.co.uk](mailto:info@pm-estates.co.uk)

[www.pm-estates.co.uk](http://www.pm-estates.co.uk)

PM Estates wish to advise prospective purchasers that we have not checked the services or appliances. The sales particulars have been prepared as a guide only; any floor-plan or map is for illustrative purposes only. PM Estates, for themselves and for the vendors or lessors of this property whose agents they are give notice that: the particulars have been produced in good faith; do not constitute any part of a contract; no person in the employment of PM Estates has any authority to make or give any representation of warranty in relation to this property.

P820