



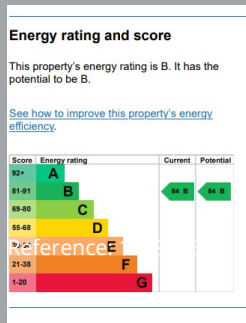
**FLAT 3**  
WAREHAM  
Dorset, BH20 4HF

£950  
PER CALENDAR MONTH

[goadsby.com](https://goadsby.com)

# TWO BEDROOM FIRST FLOOR MODERN APARTMENT

- Modern Two Bedroom Apartment
- Offered Unfurnished
- Allocated Parking
- Gas Central Heating
- EPC Rating Band B



**Deposit Amount:** £1096.15

**Council Tax:** Band B

**Furnishing:** Unfurnished

**Heating Type:** Gas fired hot water radiators

**Parking:** Allocated Parking Space  
Mains Supply Electricity  
Mains Supply Gas  
Mains Supply Water - metered

**Drainage:** Mains Supply Drainage

**Broadband:** Refer to Ofcom website [http](http://www.ofcom.gov.uk)

**Mobile Signal:** Refer to Ofcom website [http](http://www.ofcom.gov.uk)

**Flood Risk:** Very Low. For more information refer to [gov.uk](http://gov.uk), check long term flood risk [http](http://gov.uk)

Welcome to this stylish 2 bedroom apartment nestled in the heart of Town Centre. Boasting a contemporary finish, it offers a modern fitted kitchen equipped with a built-in oven, hob, and space for further appliances. A cosy sitting room is ideal for relaxation or entertaining guests and a sleek modern bathroom completes the accommodation, which comprises a shower cubicle, wc and wash hand basin.

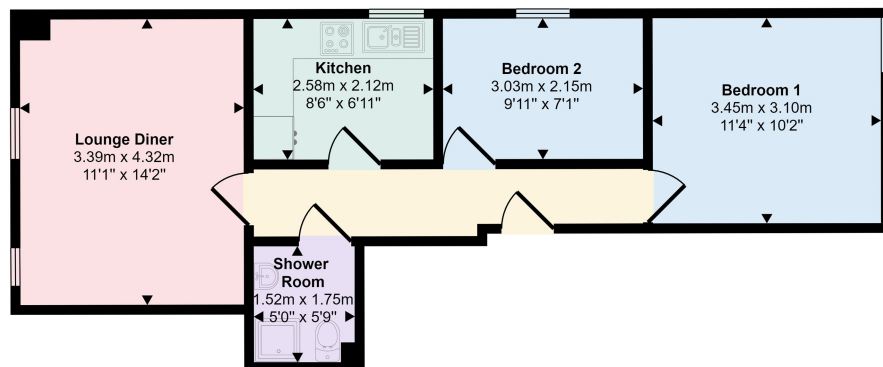
Additionally, this property also benefits from an allocated parking space, gas-fired central heating and double glazing.

Located in the heart of Wareham town centre, the Saxon walled market town, with its picturesque quay, benefits from a wide range of amenities including schools, shops, public houses, restaurants, gas-lit cinema, sports centre and mainline railway line between Weymouth and London, Waterloo. The River Frome gives boat access to Poole harbour and benefits from a marina and yacht club.

Reception 1

Kitchen

Central Heating



Floorplan

This floorplan is only for illustrative purposes and is not to scale. Measurements of rooms, doors, windows, and any items are approximate and no responsibility is taken for any error, omission or mis-statement. Icons of items such as bathroom suites are representations only and may not look like the real items. Made with Made Snappy 360.

**PLEASE NOTE:**

Measurements quoted are approximate and for guidance only. Fixtures, fittings, services & appliances have not been tested and therefore no guarantee can be given that they are in working order. Images have been produced for information and it cannot be inferred that any item shown is included with the property. These particulars are believed to be correct but their accuracy is not guaranteed and they do not constitute an offer or form part of a contract. Solicitors are specifically requested to verify the sales particulars details in the pre-contract enquiries, in particular: price, local and other searches.

Goadsby & Harding (Residential) Ltd  
Registered Office: 99 Holdenhurst Road, Bournemouth, Dorset BH8 8DY Registered in England No. 1871280

01929 555400  
[wareham@goadsby.com](mailto:wareham@goadsby.com)

10 West Street  
Wareham, Dorset  
BH20 4JX