



2 PACIFIC CLOSE

OCEAN VILLAGE  
Hampshire, SO14 3TX

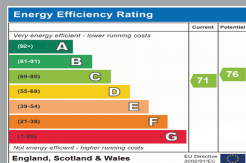
£1,750 PCM

[goadsby.com](https://www.goadsby.com)



# THREE BEDROOM TOWN HOUSE WITH STUNNING VIEWS OF SOUTHAMPTON MARINA!

- Three bedroom town house
- Ocean Village
- Direct marina views
- Garage and driveway parking
- EPC Rating - Band C



Reference: 630815

**Deposit Amount:** £2,019

**Council Tax:** Band F

**Furnishing:** Part furnished

**Heating Type:** Gas fired hot water radiators

**Parking:** Driveway

**Utilities:**

- Mains Supply Electricity
- Mains Supply Gas
- Mains Supply Water - metered

**Drainage:** Mains Supply Drainage

**Broadband:** Refer to Ofcom website  
[www.ofcom.org.uk/phones-and-broadband](http://www.ofcom.org.uk/phones-and-broadband)

**Mobile Signal:** Refer to Ofcom website  
[www.ofcom.org.uk/phones-and-broadband](http://www.ofcom.org.uk/phones-and-broadband)

**Flood Risk:** Very Low. For more information refer to gov.uk, check long term flood risk  
[www.gov.uk/check-long-term-flood-risk](http://www.gov.uk/check-long-term-flood-risk)



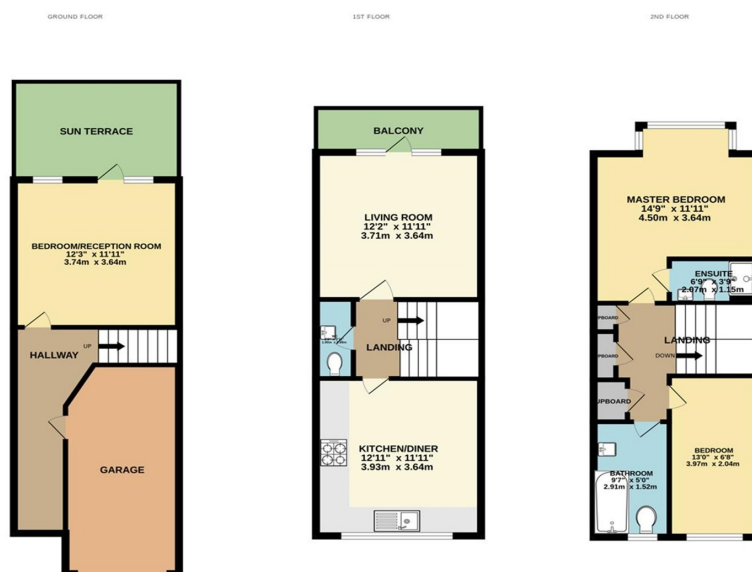
Goadsby are pleased to offer to the market this recently decorated three double bedroom town house located in the highly desirable location of Ocean Village, with fantastic marina views.

To the ground floor lies the integral garage and bedroom three/second reception, with direct access onto the sun terrace enjoying views over Southampton Marina. Leading up the stairs, the first floor comprises a large kitchen/ dining room with a range of integrated appliances, living room with access onto the balcony and WC. To the second floor lies the main bedroom with an en-suite shower room, second bedroom (bed frame, mattress and wardrobe included) and family bathroom.

Other benefits of the property include off road parking, gas central heating and new carpets in the upstairs smaller bedroom and stairways.

Located close to Southampton City Centre and within walking distance to all attractions Ocean Village has to offer including; cinemas, bars, restaurants and walks along side Southampton Water make this a very desirable location to live.

For more information and to book a viewing, call Goadsby Estate Agents in Southampton.



This Floor Plan is for guidance only and is NOT to SCALE  
Made with Mapbox (2020)

## PLEASE NOTE:

Measurements quoted are approximate and for guidance only. Fixtures, fittings, services & appliances have not been tested and therefore no guarantee can be given that they are in working order. Images have been produced for information and it cannot be inferred that any item shown is included with the property. These particulars are believed to be correct but their accuracy is not guaranteed and they do not constitute an offer or form part of a contract. Solicitors are specifically requested to verify the sales particulars details in the pre-contract enquiries, in particular: price, local and other searches.

Goadsby & Harding (Residential) Ltd

Registered Office: 99 Holdenhurst Road, Bournemouth, Dorset BH8 8DY Registered in England No. 1871280

02380 710400  
southamptonlettings@goadsby.com

54 London Road  
Southampton, Hampshire  
SO15 2AH