



14 TEMPLAR COURT
SOUTHAMPTON
Hampshire, SO14 6QZ

£1,150 PCM

goadsby.com

TWO BEDROOM FLAT CLOSE TO THE CITY CENTRE

- Two bedroom flat
- Inner Avenue
- Allocated Parking
- Close to city centre
- EPC Rating - Band C

Energy Efficiency Rating		
Very energy efficient - lower running costs		
A		
(91-100)		
B		
(81-90)		
C		
(69-80)		
D		
(55-68)		
E		
(39-54)		
F		
(29-38)		
G		
(1-28)		
Not energy efficient - higher running costs		
England, Scotland & Wales		
Current	75	77
Potential		
APARTMENT		
		107

Reference: 198980

Deposit Amount: £1,326

Council Tax: Band B

Furnishing: Part-furnished

Heating Type: Electric panel heaters / Electric overnight storage heaters

Parking: Allocated Parking Space

Utilities:

Mains Supply Electricity - Top up meter
Mains Supply Water - metered

Drainage: Mains Private Supply Drainage

Broadband: Refer to Ofcom website
www.ofcom.org.uk/phones-and-broadband

Mobile Signal: Refer to Ofcom website
www.ofcom.org.uk/phones-and-broadband

Flood Risk: No Risk. For more information refer to gov.uk, check long term flood risk
www.gov.uk/check-long-term-flood-risk



Two bedroom, part-furnished, flat situated within easy reach of the city centre. Located on the first floor the property with no lift in the block.

The property comprises of an entrance hallway with storage space. The hallway leads onto a spacious lounge area (dining table and chairs included) with a door into the separate kitchen space with white goods. Two double bedrooms can also be reached from the hallway, both with built in storage. Furniture included is a double bed, double mattress and two bedside tables.

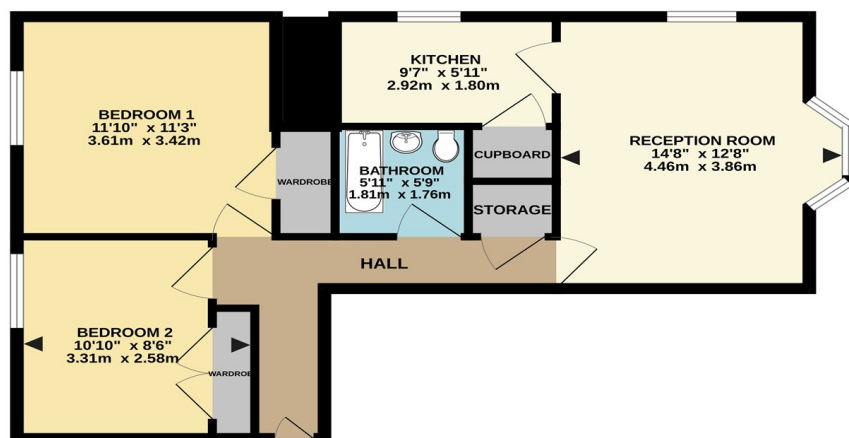
The property further benefits from allocated parking to the rear of the block for one car.

The electricity is on a top up key meter.

Please note, the marketing photos for the property were taken before the current tenancy commenced.

For further information and to book a viewing, call Goadsby Estate Agents in Southampton.

APARTMENT



This Floor Plan is for guidance only and is NOT to SCALE.
Made with Metrage 02024

PLEASE NOTE:

Measurements quoted are approximate and for guidance only. Fixtures, fittings, services & appliances have not been tested and therefore no guarantee can be given that they are in working order. Images have been produced for information and it cannot be inferred that any item shown is included with the property. These particulars are believed to be correct but their accuracy is not guaranteed and they do not constitute an offer or form part of a contract. Solicitors are specifically requested to verify the sales particulars details in the pre-contract enquiries, in particular: price, local and other searches.

Goadsby & Harding (Residential) Ltd

Registered Office: 99 Holdenhurst Road, Bournemouth, Dorset BH8 8DY Registered in England No. 1871280

02380 710400
southamptonlettings@goadsby.com

54 London Road
Southampton, Hampshire
SO15 2AH