



FLAT 3/CHARMERE
BITTERNE
Hampshire, SO18 1GS



£800 PCM

UNFURNISHED FIRST FLOOR ONE BEDROOM FLAT.

- One bedroom flat
- Unfurnished
- Communal garden
- Good size bedroom
- EPC Rating Band C

| Score | Energy rating | Current | Potential |
|-------|---------------|---------|-----------|
| 82+ | A | | |
| 81-81 | B | | |
| 69-80 | C | 78 C | 79 C |
| 55-68 | D | | |
| 39-54 | E | | |
| 21-38 | F | | |
| 1-20 | G | | |

Reference: 1130589

Deposit Amount: £923.00

Council Tax: A

Furnishing: Unfurnished

Heating Type: Gas fired hot water radiators

Parking: No parking

Utilities:

- Mains Supply Electricity
- Mains Supply Gas
- Mains Supply Water - metered

Drainage: Mains Supply Drainage

Broadband: Refer to Ofcom website
www.ofcom.org.uk/phones-and-broadband

Mobile Signal: Refer to Ofcom website
www.ofcom.org.uk/phones-and-broadband

Flood Risk: Very Low. For more information
refer to gov.uk, check long term flood risk
www.gov.uk/check-long-term-flood-risk



One bedroom first floor situated close to Bitterne Park.

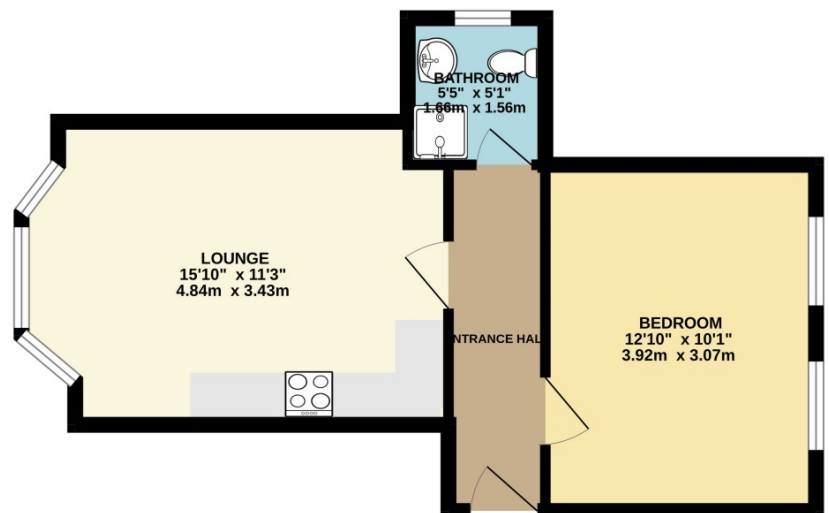
This property offers an open plan lounge and kitchen equipped with ceramic hob, electric oven, washing machine and fridge with an icebox. The bedroom is a good size and bathroom has a shower cubicle.

Further benefits include gas central heating and communal gardens.

Regrettably, there is no parking.

For further information and to book in a viewing, call Goadsby Estate Agents in Southampton.

Please note, the marketing photos for this property were taken before the current tenancy in 2024.



This floorplan is for guidance only and is NOT to SCALE
Made with Metropix ©2024

PLEASE NOTE:

Measurements quoted are approximate and for guidance only. Fixtures, fittings, services & appliances have not been tested and therefore no guarantee can be given that they are in working order. Images have been produced for information and it cannot be inferred that any item shown is included with the property. These particulars are believed to be correct but their accuracy is not guaranteed and they do not constitute an offer or form part of a contract. Solicitors are specifically requested to verify the sales particulars details in the pre-contract enquiries, in particular: price, local and other searches.

Goadsby & Harding (Residential) Ltd

Registered Office: 99 Holdenhurst Road, Bournemouth, Dorset BH8 8DY Registered in England No. 1871280

02380 710400
southamptonlettings@goadsby.com

54 London Road
Southampton, Hampshire
SO15 2AH