



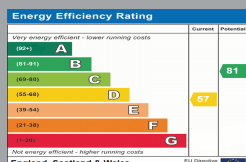
FLAT 10 DORVAL HOUSE
BANISTER PARK
Hampshire, SO15 2NH

£1,250 PCM

goadsby.com

SPACIOUS PART FURNISHED TWO BEDROOM FLAT WITH GARAGE

- Two bedroom flat
- Part furnished
- Good location
- Garage
- EPC Rating - Band D



Reference: 1154850

Deposit Amount: £1,442

Council Tax: Band A

Furnishing: Part Furnished

Heating Type: Electric panel heaters

Parking: Garage

Utilities:

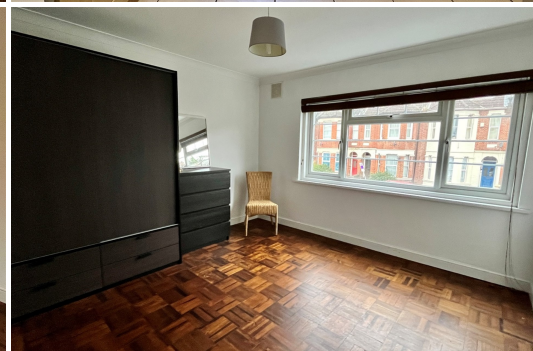
- Mains Supply Electricity
- Mains Supply Water - metered

Drainage: Mains Private Supply Drainage

Broadband: Refer to Ofcom website
www.ofcom.org.uk/phones-and-broadband

Mobile Signal: Refer to Ofcom website
www.ofcom.org.uk/phones-and-broadband

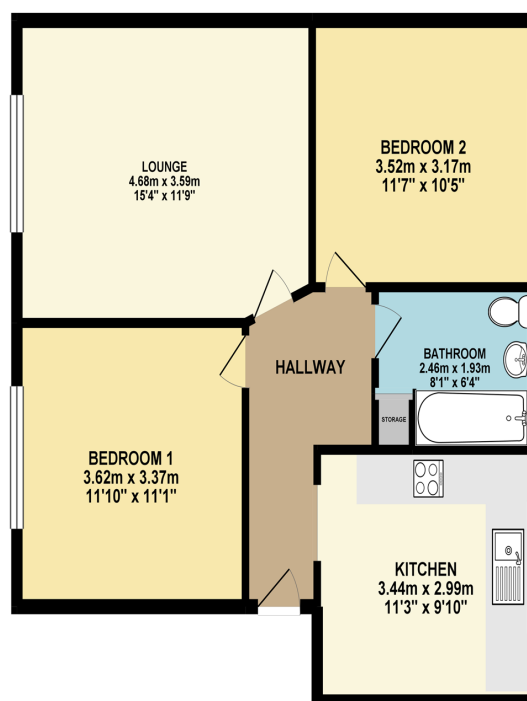
Flood Risk: Medium. For more information refer to gov.uk, check long term flood risk
www.gov.uk/check-long-term-flood-risk



First floor two bedroom flat with paraquet flooring. Both bedrooms are doubles, one bedroom has double bed with mattress, two bedside tables with lamps. The front facing double bedroom comes with large double wardrobe, chest of drawers, mirror and wicker chair. The kitchen is a good size with electric hob and oven, washer dryer, dishwasher and freestanding fridge freezer. The lounge is spacious with brown material corner sofa, coffee table and rug. Bathroom has a modern feel with heated towel rail, electric shower plus shower mixer taps over bath.

The property is all electric and benefits from a good size garage. Close to the City Centre and Shirley this property is ideal for two sharers.

FIRST FLOOR



PLEASE NOTE:

Measurements quoted are approximate and for guidance only. Fixtures, fittings, services & appliances have not been tested and therefore no guarantee can be given. Images have been produced for information and it cannot be inferred that any item shown is included with the property. These particulars are believed to be correct but their accuracy is not guaranteed and they do not constitute an offer or form part of a contract. Solicitors are specifically requested to verify the sales particulars details in the pre-contract enquiries, in particular: price, local and other searches.

Goadsby & Harding (Residential) Ltd
Registered Office: 99 Holdenhurst Road, Bournemouth, Dorset BH8 8DY Registered in England No. 1871280

02380 710400
southamptonlettings@goadsby.com

54 London Road
Southampton, Hampshire
SO15 2AH