



FLAT 8 LEWIS COURT
SOUTHBOURNE
Dorset, BH6 3AH

£900 PCM

goadsby.com

RECENTLY REFURBISHED ONE BEDROOM FIRST FLOOR APARTMENT

- One Bedroom Flat
- First Floor
- Unfurnished
- Great Location
- EPC Rating: Band C

Energy Efficiency Rating		
Band	Current	Potential
A		
B		
C	70	81
D		
E		
F		
G		

Not energy efficient - higher running costs

England & Wales

EU Directive 2002/91/EC

www.epc.co.uk

Reference: 1088367

Council Tax: Band A

Deposit Amount: £1038.46

Furnishing: Unfurnished

Heating Type: Gas fired hot water radiators
warm air / Underfloor

Parking: No parking

Utilities:

- Mains Supply Electricity
- Mains Supply Gas
- Mains Supply Water - metered

Drainage: Mains Supply Drainage

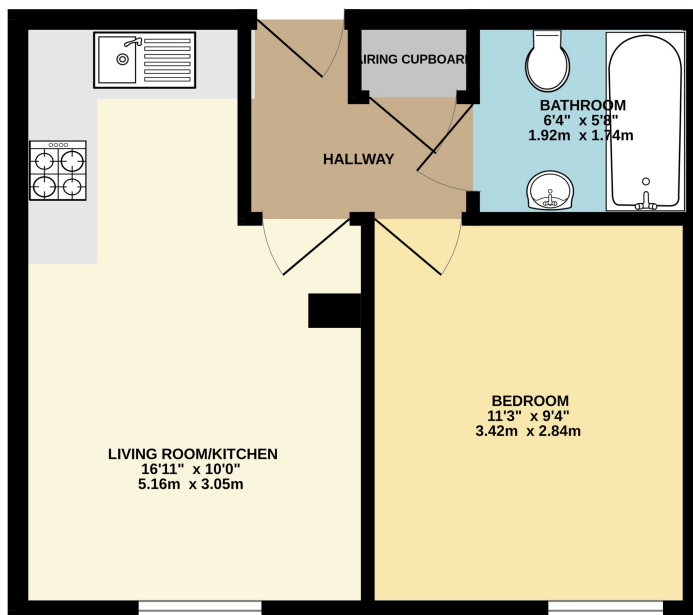
Broadband: Refer to Ofcom website
www.ofcom.org.uk/phones-and-broadband

Mobile Signal: Refer to Ofcom website
www.ofcom.org.uk/phones-and-broadband

Flood Risk: For more information refer to
gov.uk, check long term flood risk
www.gov.uk/check-long-term-flood-risk



Nestled between Southbourne and Tuckton is this one double bedroom, first floor apartment in a modern purpose built block. The property is with easy reach of Southbourne Cliff top as well as the shops and amenities of Tuckton and the River Stour beyond. The accommodation comprises a communal entrance with stairs leading to the first floor. The flat itself benefits entrance hall with airing cupboard, bedroom, bathroom with shower over bath, WC and wash hand basin and an open-plan kitchen / living room. The property has been refurbished to include a new kitchen, new carpets and full re-decoration.



PLEASE NOTE:

This Floor Plan is for guidance only and is NOT to SCALE
Made with Metropix ©2020

Measurements quoted are approximate and for guidance only. Fixtures, fittings, services & appliances have not been tested and therefore no guarantee can be given that they are in working order. Images have been produced for information and it cannot be inferred that any item shown is included with the property. These particulars are believed to be correct but their accuracy is not guaranteed and they do not constitute an offer or form part of a contract. Solicitors are specifically requested to verify the sales particulars details in the pre-contract enquiries, in particular: price, local and other searches.

Goadsby & Harding (Residential) Ltd

Registered Office: 99 Holdenhurst Road, Bournemouth, Dorset BH8 8DY Registered in England No. 1871280

01202 432188
southbourne@goadsby.com

31 Southbourne Grove

Southbourne
Bournemouth, Dorset
BH6 3QT