



2 MARINERS WAY  
CHICKERELL  
Dorset, DT3 4LS

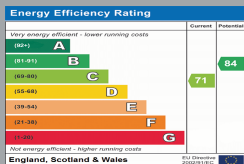
£1,400  
PER CALENDAR MONTH

[goadsby.com](http://goadsby.com)



# Three Bedroom Detached Family Home

- Three Bedrooms
- Detached Home
- Garage & Parking
- Easy Maintainable Garden
- EPC Rating Band: C



Reference: 1138119

**Deposit Amount:** £1,615.38

**Council Tax:** Band D

**Furnishing:** Unfurnished

**Heating Type:** Gas fired hot water radiators

**Parking:** Garage and parking in front of the garage

**Utilities:**

- Mains Supply Electricity
- Mains Supply Gas
- Mains Supply Water - metered

**Drainage:** Mains Supply Drainage

**Broadband:** Refer to Ofcom website [www.ofcom.org.uk/phones-and-broadband](http://www.ofcom.org.uk/phones-and-broadband)

**Mobile Signal:** Refer to Ofcom website [www.ofcom.org.uk/phones-and-broadband](http://www.ofcom.org.uk/phones-and-broadband)

**Flood Risk:** Low. For more information refer to [gov.uk](http://gov.uk), check long term flood risk [www.gov.uk/check-long-term-flood-risk](http://www.gov.uk/check-long-term-flood-risk)



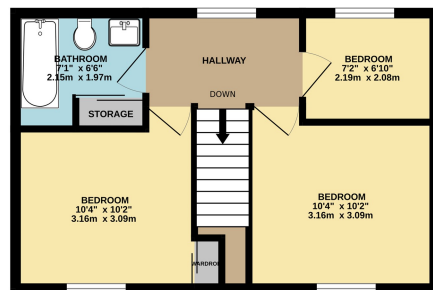
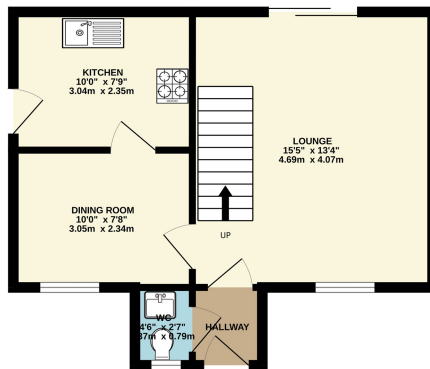
This three bedroom family home consists of: A nice size lounge leading to a separate dining room. Off the dining room is the kitchen with access to the side of the property and the rear garden.

On the first floor are two double bedrooms, the main offering a built in wardrobe and the third bedroom a single room. The family bathroom offers a bath with a shower over and storage space.

At the rear of the property is a well maintained rear garden with access to the garage and rear parking.

GROUND FLOOR

1ST FLOOR



This Floor Plan is for guidance only and is NOT to SCALE  
Made with Metropix ©2024

**PLEASE NOTE:**

Measurements quoted are approximate and for guidance only. Fixtures, fittings, services & appliances have not been tested and therefore no guarantee can be given that they are in working order. Images have been produced for information and it cannot be inferred that any item shown is included with the property. These particulars are believed to be correct but their accuracy is not guaranteed and they do not constitute an offer or form part of a contract. Solicitors are specifically requested to verify the sales particulars details in the pre-contract enquiries, in particular: price, local and other searches.

**Goadsby & Harding (Residential) Ltd**

Registered Office: 99 Holdenhurst Road, Bournemouth, Dorset BH8 8DY Registered in England No. 1871280

01305 831800

weymouth@goadsby.com

2-4 Coburg Place  
Weymouth, Dorset  
DT4 8HP