

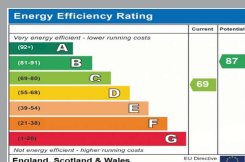
86 CATALINA DRIVE
BAITER PARK
Dorset, BH15 1TQ

£1,400 PCM

goadsby.com

A TWO BEDROOM BUNGALOW WITH VIEWS OVER BAITER PARK AND POOLE HARBOUR.

- Two Double Bedroom Bungalow
- Baiter Park & Harbour Views
- Allocated Parking & Garden
- Offered Unfurnished
- EPC Rating: Band C



Reference: 896397

Deposit Amount: £1,615.38

Council Tax: Band D

Furnishing: Unfurnished

Heating Type: Gas Central Heating

Parking: Allocated Parking

Utilities:

- Mains Supply Electricity
- Mains Supply Gas
- Mains Supply Water - metered

Drainage: Mains Supply Drainage

Broadband: Refer to Ofcom website
www.ofcom.org.uk/phones-and-broadband

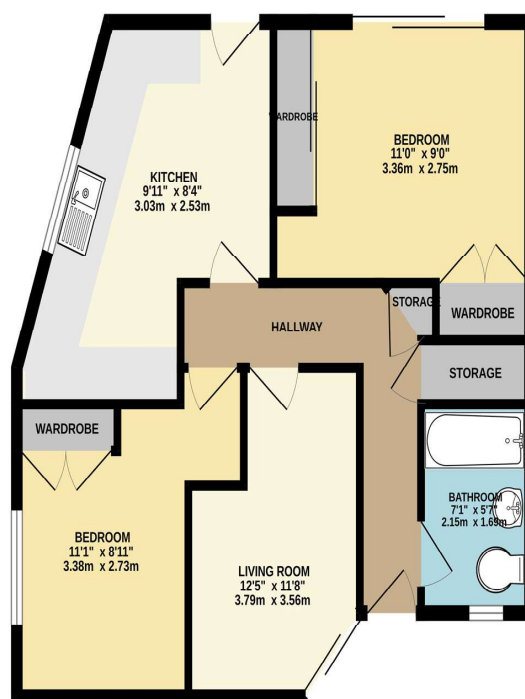
Mobile Signal: Refer to Ofcom website
www.ofcom.org.uk/phones-and-broadband

Flood Risk: For more information refer to
gov.uk, check long term flood risk
www.gov.uk/check-long-term-flood-risk



This spacious two double bedroom bungalow is offered on an unfurnished basis with allocated parking and a private rear garden. The property also benefits from a front decking area with views over Baiter Park and Poole Harbour.

GROUND FLOOR



This Floor Plan is for guidance only and is NOT to SCALE
 Made with Merge 12015

PLEASE NOTE:

Measurements quoted are approximate and for guidance only. Fixtures, fittings, services & appliances have not been tested and therefore no guarantee can be given that they are in working order. Images have been produced for information and it cannot be inferred that any item shown is included with the property. These particulars are believed to be correct but their accuracy is not guaranteed and they do not constitute an offer or form part of a contract. Solicitors are specifically requested to verify the sales particulars details in the pre-contract enquiries, in particular: price, local and other searches.

Goadsby & Harding (Residential) Ltd

Registered Office: 99 Holdenhurst Road, Bournemouth, Dorset BH8 8DY Registered in England No. 1871280

01202 686555
poole@goadsby.com

245 High Street North
 Poole, Dorset
 BH15 1DX