



FLAT 9, CHAPEL COURT
ASHLEY CROSS
Dorset, BH14 0JU



£1,250 PCM

goadsby.com

TOP FLOOR APARTMENT WITH PARKING IN QUIET COURTYARD CLOSE IN ASHLEY CROSS

- Top Floor Apartment
- Two Double Bedrooms
- Allocated Parking
- Offered Furnished
- EPC Rating: Band A

Energy Efficiency Rating		Current	Potential
Very energy efficient - lower running costs			
A	(91-100)	92	92
B	(81-90)		
C	(71-80)		
D	(61-70)		
E	(51-60)		
F	(41-50)		
G	(31-40)		
Not energy efficient - higher running costs			
England, Scotland & Wales			

Reference: 1183431

Deposit Amount: £1,442.30

Council Tax Band: C

Furnishing: Furnished

Heating Type: Electric Heating

Parking: Allocated Parking

Utilities:

Mains Supply Electricity (No Gas)
Mains Supply Water - metered

Drainage: Mains Supply Drainage

Broadband: Refer to Ofcom website
www.ofcom.org.uk/phones-and-broadband

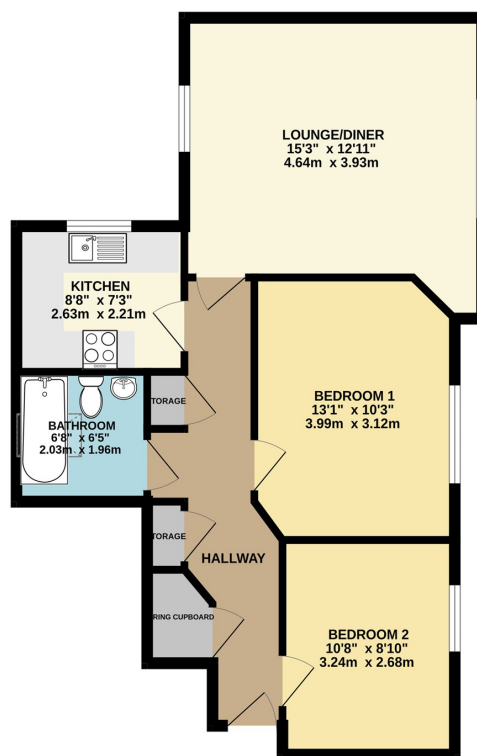
Mobile Signal: Refer to Ofcom website
www.ofcom.org.uk/phones-and-broadband

Flood Risk: For more information refer to
gov.uk, check long term flood risk
www.gov.uk/check-long-term-flood-risk



A spacious top floor apartment located in a quiet courtyard close to Ashley Cross, Poole. The property is fully furnished and includes two double bedrooms, a large bright living room, a separate fully fitted kitchen and a modern family bathroom. Further benefits include allocated parking for one car.

TOP FLOOR



This Floor Plan is for guidance only and is NOT to SCALE
Made with Metropix ©2025

PLEASE NOTE:

Measurements quoted are approximate and for guidance only. Fixtures, fittings, services & appliances have not been tested and therefore no guarantee can be given that they are in working order. Images have been produced for information and it cannot be inferred that any item shown is included with the property. These particulars are believed to be correct but their accuracy is not guaranteed and they do not constitute an offer or form part of a contract. Solicitors are specifically requested to verify the sales particulars details in the pre-contract enquiries, in particular: price, local and other searches.

Goadsby & Harding (Residential) Ltd

Registered Office: 99 Holdenhurst Road, Bournemouth, Dorset BH8 8DY Registered in England No. 1871280

01202 686555
poole@goadsby.com

245 High Street North
Poole, Dorset
BH15 1DX