



2 PARK CLOSE

POOLE

Dorset, BH15 2FH

£1,850 PCM

[goadsby.com](https://www.goadsby.com)

THREE BEDROOM FAMILY HOME WITH PARKING & GARDEN

- Three Bedroom Townhouse
- Three Bathrooms
- Garden & Parking
- Offered Part Furnished
- EPC Rating: Band C

Energy Efficiency Rating	
Very energy efficient - lower running costs	
A (86-91)	
B (81-85)	
C (76-80)	
D (69-75)	
E (55-68)	
F (49-54)	
G (45-48)	
Not energy efficient - higher running costs	
England, Scotland & Wales	
Current	78
Potential	88

Reference: 1169157

Deposit Amount: £2,134.61

Council Tax: Band E

Furnishing: Part Furnished

Heating Type: Gas fired hot water radiators

Parking: Two Allocated Parking Spaces

Utilities:

- Mains Supply Electricity
- Mains Supply Gas
- Mains Supply Water - metered

Drainage: Mains Supply Drainage

Broadband: Refer to Ofcom website
www.ofcom.org.uk/phones-and-broadband

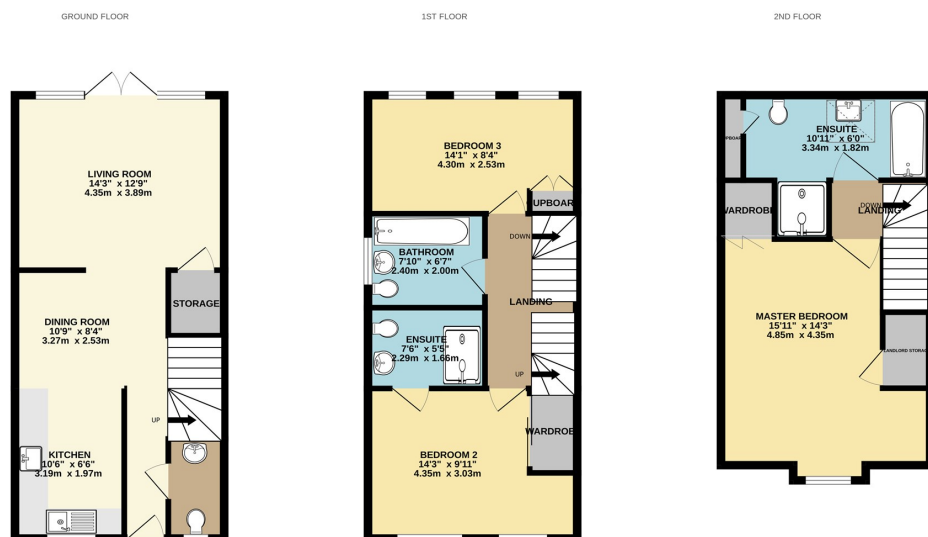
Mobile Signal: Refer to Ofcom website
www.ofcom.org.uk/phones-and-broadband

Flood Risk: For more information refer to
gov.uk, check long term flood risk
www.gov.uk/check-long-term-flood-risk



This well presented townhouse is situated in a quiet cul-de-sac location close to Poole Park, Poole Hospital and Poole Town Centre.

The property is offered on a part-furnished basis and comprises a spacious open plan living area, three double bedrooms and three bathrooms. Further benefits include two allocated parking spaces and private courtyard garden.



This Floor Plan is for guidance only and is NOT to SCALE
Made with Metroplan ©2025

PLEASE NOTE:

Measurements quoted are approximate and for guidance only. Fixtures, fittings, services & appliances have not been tested and therefore no guarantee can be given that they are in working order. Images have been produced for information and it cannot be inferred that any item shown is included with the property. These particulars are believed to be correct but their accuracy is not guaranteed and they do not constitute an offer or form part of a contract. Solicitors are specifically requested to verify the sales particulars details in the pre-contract enquiries, in particular: price, local and other searches.

Goadsby & Harding (Residential) Ltd

Registered Office: 99 Holdenhurst Road, Bournemouth, Dorset BH8 8DY Registered in England No. 1871280

01202 686555
poole@goadsby.com

245 High Street North
Poole, Dorset
BH15 1DX