



FLAT 16, ST. PETERS GATE
BOURNEMOUTH
Dorset, BH1 2LQ

£1,100 PCM

goadsby.com

THREE BEDROOM APARTMENT SITUATED IN BOURNEMOUTH TOWN CENTRE.

- Three Bedroom Apartment
- Offered Unfurnished
- Town Centre Location
- No Parking Included
- EPC Rating: Band TBC



Reference: 1192589

Deposit Amount: £1269.23

Council Tax: Band B

Furnishing: Unfurnished

Heating Type: Electric overnight storage heaters

Parking: No Parking

Utilities:

Mains Supply Electricity
Mains Supply Gas
Mains Supply Water - metered

Drainage: Mains Supply Drainage

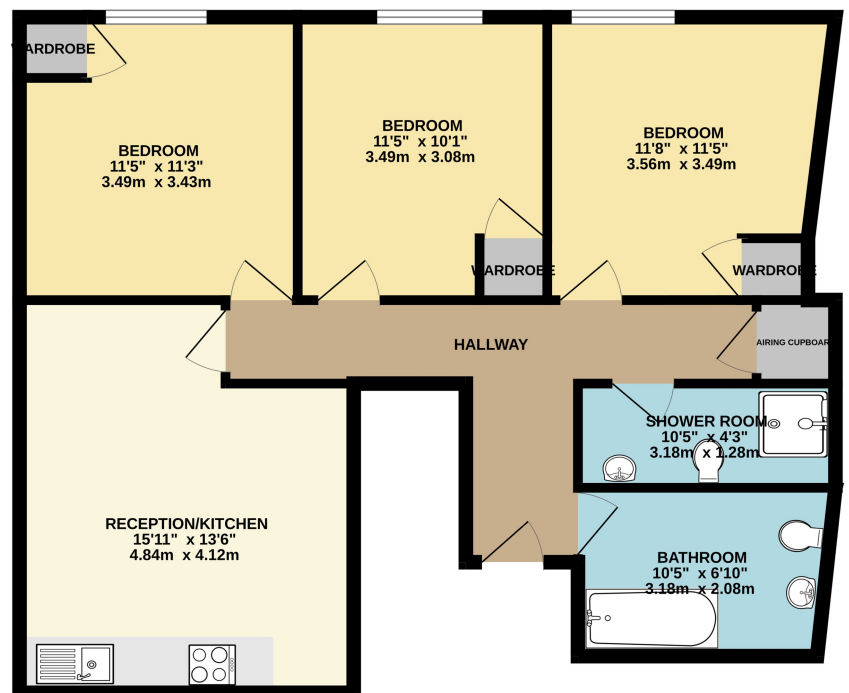
Broadband: Refer to Ofcom website
www.ofcom.org.uk/phones-and-broadband

Mobile Signal: Refer to Ofcom website
www.ofcom.org.uk/phones-and-broadband

Flood Risk: For more information refer to
gov.uk, check long term flood risk
www.gov.uk/check-long-term-flood-risk



This spacious three-bedroom flat is located in the heart of Bournemouth Town Centre, just a short distance from local amenities and the town's award-winning beaches. The property comes unfurnished with two bathrooms and no parking included. The property is ideal for sharers.



This Floor Plan is for guidance only and is NOT to SCALE
Made with Metropix ©2025

PLEASE NOTE:

Measurements quoted are approximate and for guidance only. Fixtures, fittings, services & appliances have not been tested and therefore no guarantee can be given that they are in working order. Images have been produced for information and it cannot be inferred that any item shown is included with the property. These particulars are believed to be correct but their accuracy is not guaranteed and they do not constitute an offer or form part of a contract. Solicitors are specifically requested to verify the sales particulars details in the pre-contract enquiries, in particular: price, local and other searches.

Goadsby & Harding (Residential) Ltd

Registered Office: 99 Holdenhurst Road, Bournemouth, Dorset BH8 8DY Registered in England No. 1871280

01202 544644
bournemouthlettings@goadsby.com

114 Old Christchurch Road
Bournemouth, Dorset
BH1 1LU