



**FLAT 2 CRAGHEAD**  
BOURNEMOUTH  
Dorset, BH1 3JE

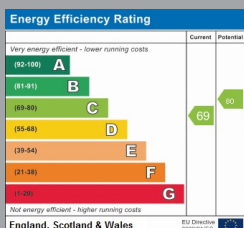
£1,000 PCM

[goadsby.com](https://goadsby.com)



# SPACIOUS ONE BEDROOM GROUND FLOOR APARTMENT WITH PATIO, GARAGE & PARKING.

- Spacious One Bedroom Ground Floor
- Offered Furnished
- Garage & Ad-Hoc Parking
- Communal garden with use of swimming pool
- EPC Rating: Band C



Reference: 147560

Deposit Amount - £1153.84

Council Tax - Band C

**Furnishing:** part-furnished

**Heating Type:** Electric

**Parking:** Ad-hoc permit parking

**Utilities:**

Mains Supply Electricity

Mains Supply Water - metered

**Drainage:** Mains Supply Drainage

**Broadband:** Refer to Ofcom website

[www.ofcom.org.uk/phones-and-broadband](http://www.ofcom.org.uk/phones-and-broadband)

**Mobile Signal:** Refer to Ofcom website

[www.ofcom.org.uk/phones-and-broadband](http://www.ofcom.org.uk/phones-and-broadband)

**Flood Risk:** For more information refer to

gov.uk, check long term flood risk

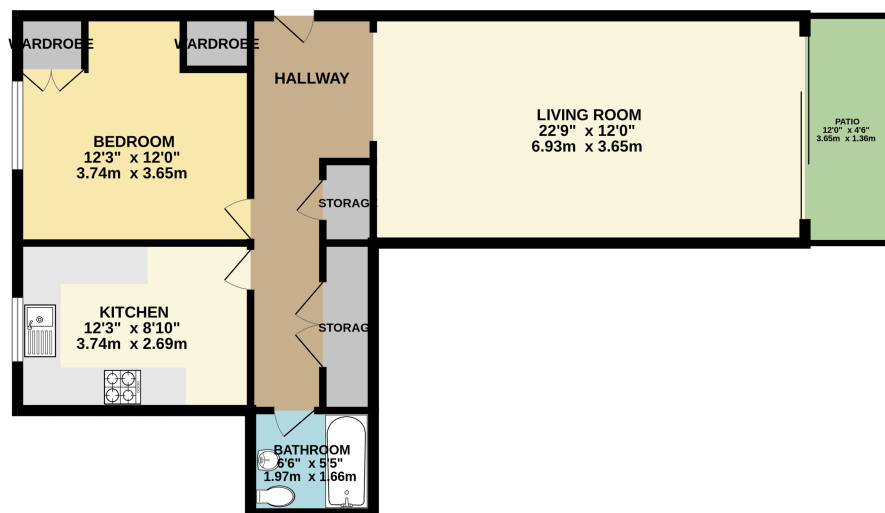
[www.gov.uk/check-long-term-flood-risk](http://www.gov.uk/check-long-term-flood-risk)



This spacious one bedroom apartment is situated on Manor Road in the craghead development. Beautifully positioned on the clifftop with direct access from the communal grounds. There is secure gated parking on a first come first served basis and a garage which could be used for parking or storage. Upon access to the apartment you are welcomed into an open hallway with access straight into the living room. Off of the living is a patio overlooking the beautifully kept gardens and swimming pool for use of the residents. Moving back through the apartment there is a spacious double bedroom, kitchen provided with Fridge freezer and washing machine, additional storage cupboards and a family bathroom. Offered on a part-furnished basis.

Please note there is currently scaffolding erected around the building and ongoing building works. This will prohibit use of the patio space for the property until complete. This is estimated to be approximately April 2026, however the date is subject to change.

## GROUND FLOOR



This Floor Plan is for guidance only and is NOT to SCALE  
Made with Metropix ©2025

## PLEASE NOTE:

Measurements quoted are approximate and for guidance only. Fixtures, fittings, services & appliances have not been tested and therefore no guarantee can be given that they are in working order. Images have been produced for information and it cannot be inferred that any item shown is included with the property. These particulars are believed to be correct but their accuracy is not guaranteed and they do not constitute an offer or form part of a contract. Solicitors are specifically requested to verify the sales particulars details in the pre-contract enquiries, in particular: price, local and other searches.

Goadsby & Harding (Residential) Ltd

Registered Office: 99 Holdenhurst Road, Bournemouth, Dorset BH8 8DY Registered in England No. 1871280

01202 544644

[bournemouthlettings@goadsby.com](mailto:bournemouthlettings@goadsby.com)

114 Old Christchurch Road  
Bournemouth, Dorset  
BH1 1LU