



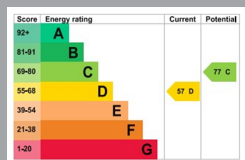
FLAT 10, PORTSBRIDGE COURT 11A, WESTOV
BOURNEMOUTH
Dorset, BH1 2BY

£900 PCM

goadsby.com

TWO BEDROOM FLAT IN BOURNEMOUTH TOWN CENTRE

- Two Bedroom Flat
- Offered Part-furnished
- Top Floor
- No Parking
- EPC Rating: Band D



Reference: 1188029

Deposit Amount: £1,038.46

Council Tax: Band A

Furnishing: Part-furnished

Heating Type: Electrical

Parking: No Parking

Utilities:

Mains Supply Electricity
Mains Supply Water

Drainage: Mains Supply Drainage

Broadband: Refer to Ofcom website
www.ofcom.org.uk/phones-and-broadband

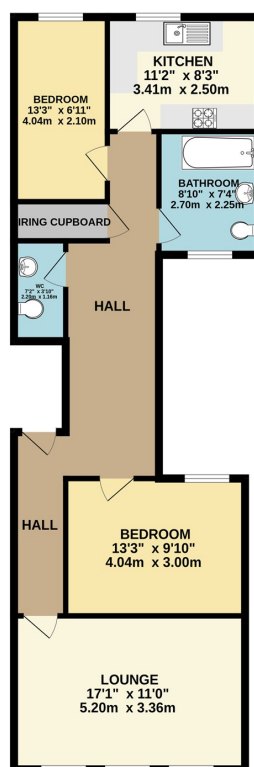
Mobile Signal: Refer to Ofcom website
www.ofcom.org.uk/phones-and-broadband

Flood Risk: For more information refer to
gov.uk, check long term flood risk
www.gov.uk/check-long-term-flood-risk



Two bedroom top floor flat, with large hallway area, bathroom and additional WC. Decorated with new carpets, no lift or parking. Offered to the market part-furnished. Central Bournemouth town location, with views across Bournemouth Gardens.

TOP FLOOR



This Floor Plan is for guidance only and is NOT to SCALE
Made with Metropix (2025)

PLEASE NOTE:

Measurements quoted are approximate and for guidance only. Fixtures, fittings, services & appliances have not been tested and therefore no guarantee can be given that they are in working order. Images have been produced for information and it cannot be inferred that any item shown is included with the property. These particulars are believed to be correct but their accuracy is not guaranteed and they do not constitute an offer or form part of a contract. Solicitors are specifically requested to verify the sales particulars details in the pre-contract enquiries, in particular: price, local and other searches.

Goadsby & Harding (Residential) Ltd

Registered Office: 99 Holdenhurst Road, Bournemouth, Dorset BH8 8DY Registered in England No. 1871280

01202 544644
bournemouthlettings@goadsby.com

114 Old Christchurch Road
Bournemouth, Dorset
BH1 1LU