



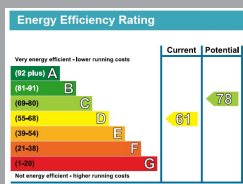
FLAT 5 STIRLING COURT, 28 MANOR ROAD
BOURNEMOUTH
Dorset, BH1 3EZ

£1,350 PCM

goadsby.com

SPACIOUS FOUR BEDROOM FLAT WITH PARKING

- Four Double Bedroom Flat
- Offered unfurnished
- Parking
- Close To The Cliff Tops
- EPC Rating: Band D



Reference: 869060

Deposit Amount: £1,557.69

Council Tax: Band D

Furnishing: Unfurnished

Heating Type: Electric night storage heaters

Parking: Two Parking Spaces

Utilities:

Mains Supply Electricity
 Mains Supply Water - metered

Drainage: Mains Supply Drainage

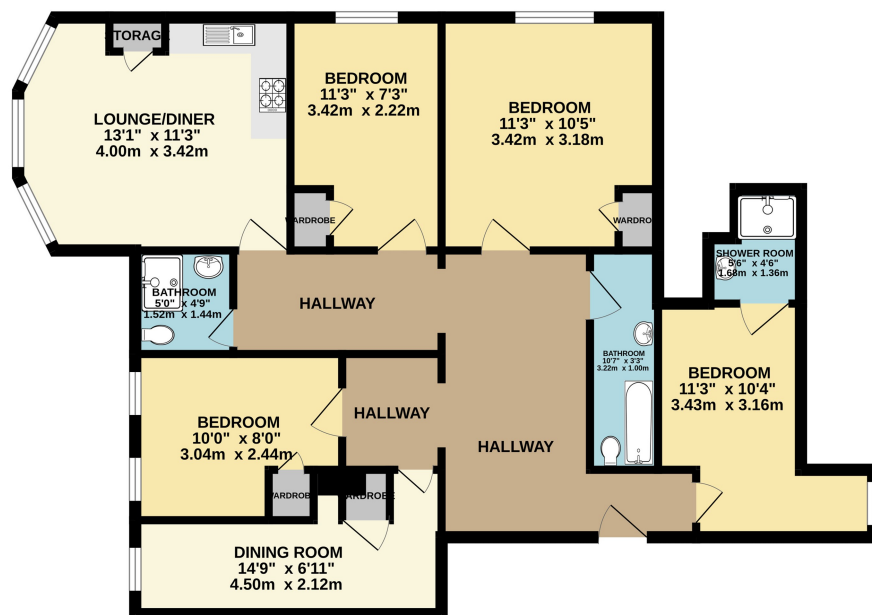
Broadband: Refer to Ofcom website
www.ofcom.org.uk/phones-and-broadband

Mobile Signal: Refer to Ofcom website
www.ofcom.org.uk/phones-and-broadband

Flood Risk: For more information refer to
gov.uk, check long term flood risk
www.gov.uk/check-long-term-flood-risk



Four double bedroom apartment with two reception rooms, located in the desirable East cliff are and just a short walk from the cliff top. The property is spacious throughout and benefits from parking for two cars. Offered unfurnished with a communal washing room.



This Floor Plan is for guidance only and is NOT to SCALE
 Made with Metropix C2025

PLEASE NOTE:

Measurements quoted are approximate and for guidance only. Fixtures, fittings, services & appliances have not been tested and therefore no guarantee can be given that they are in working order. Images have been produced for information and it cannot be inferred that any item shown is included with the property. These particulars are believed to be correct but their accuracy is not guaranteed and they do not constitute an offer or form part of a contract. Solicitors are specifically requested to verify the sales particulars details in the pre-contract enquiries, in particular: price, local and other searches.

Goadsby & Harding (Residential) Ltd

Registered Office: 99 Holdenhurst Road, Bournemouth, Dorset BH8 8DY Registered in England No. 1871280

01202 544644

bournemouthlettings@goadsby.com

114 Old Christchurch Road
 Bournemouth, Dorset
 BH1 1LU