

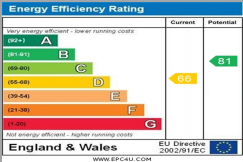
6 NEW ROAD
ENSBURY PARK
Dorset, BH10 7DT

£1,800 PCM

goadsby.com

DETACHED THREE
BEDROOM FAMILY
HOME IN POPULAR
RESIDENTIAL
LOCATION

- Three Bedroom Detached House
- Offered Furnished
- Drive Way Parking
- EPC Rating: Band D



Reference: 1167537

Deposit Amount: £2,076.92

Council Tax Band: D

Furnishing: Furnished

Heating Type: Gas fired hot water radiators

Parking: Driveway

Utilities:

- Mains Supply Electricity
- Mains Supply Gas
- Mains Supply Water - metered

Drainage: Mains Supply Drainage

Broadband: Refer to Ofcom website
www.ofcom.org.uk/phones-and-broadband

Mobile Signal: Refer to Ofcom website
www.ofcom.org.uk/phones-and-broadband

Flood Risk: For more information refer to
gov.uk, check long term flood risk
www.gov.uk/check-long-term-flood-risk

01202 544644
bourne-mouthlettings@goadsby.com

114 Old Christchurch Road
Bournemouth, Dorset
BH1 1LU



Detached three bedroom family home in popular residential location of Northbourne. The property is in a favourable catchment area for local schools.

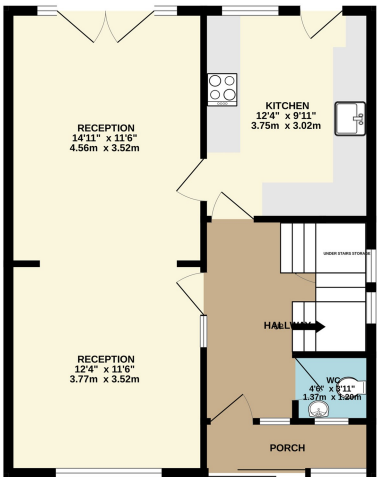
The accommodation comprises of a ground floor W/C, spacious living/dinning room, kitchen with doors out on to the garden.

Spaces three double bedrooms and family bathroom upstairs.

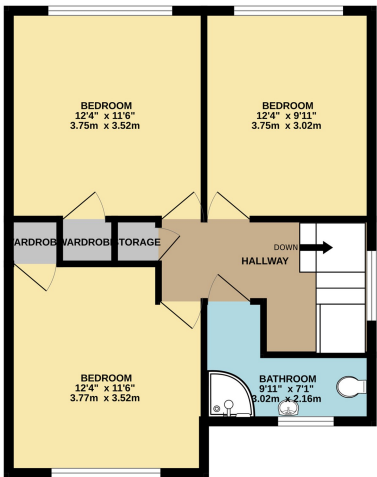
There is driveway parking, as well as a garage.

Offered on a furnished basis.

GROUND FLOOR
586 sq.ft. (54.5 sq.m.) approx.



1ST FLOOR
556 sq.ft. (51.6 sq.m.) approx.



TOTAL FLOOR AREA: 1142 sq.ft. (106.1 sq.m.) approx.
This Floor Plan is for guidance only and is NOT to SCALE
Made with Metropix ©2025

PLEASE NOTE:

Measurements quoted are approximate and for guidance only. Fixtures, fittings, services & appliances have not been tested and therefore no guarantee can be given that they are in working order. Images have been produced for information and it cannot be inferred that any item shown is included with the property. These particulars are believed to be correct but their accuracy is not guaranteed and they do not constitute an offer or form part of a contract. Solicitors are specifically requested to verify the sales particulars details in the pre-contract enquiries, in particular: price, local and other searches.

Goadsby & Harding (Residential) Ltd
Registered Office: 99 Holdenhurst Road, Bournemouth, Dorset BH8 8DY Registered in England No. 1871280