



FLAT 6 RICHMOND DENE
BOURNEMOUTH CENTRE
Dorset, BH2 6LY

£1,300 PCM

goadsby.com

MODERN TWO BEDROOM APARTMENT WITH GARAGE & BALCONY

- Modern Two Bedroom Apartment
- Garage & Balcony
- Offered Part Furnished
- Short Distance To Town Centre
- EPC Band: TBC

Energy Efficiency Rating	
Current	Potential
<small>Best energy efficient - lower running costs</small> A 91-100	
B 81-90	
C 69-80	
D 55-68	
E 49-54	
F 39-48	
G 1-38	
<small>Not energy efficient - higher running costs</small>	
England & Wales	
<small>EU Directive 2002/91/EC</small>	
<small>www.epc.co.uk</small>	



Reference: 1149285

Deposit Amount: £1,500

Council Tax: Band C

Furnishing: Part Furnished

Heating Type: Gas fired hot water radiators

Parking: Garage and Ad hoc Parking

Utilities: Ask Agent
 Mains Supply Electricity
 Mains Supply Gas
 Mains Supply Water - metered

Drainage: Mains Supply Drainage

Broadband: Refer to Ofcom website
www.ofcom.org.uk/phones-and-broadband

Mobile Signal: Refer to Ofcom website
www.ofcom.org.uk/phones-and-broadband

Flood Risk: Very Low. For more information refer to gov.uk, check long term flood risk www.gov.uk/check-long-term-flood-risk

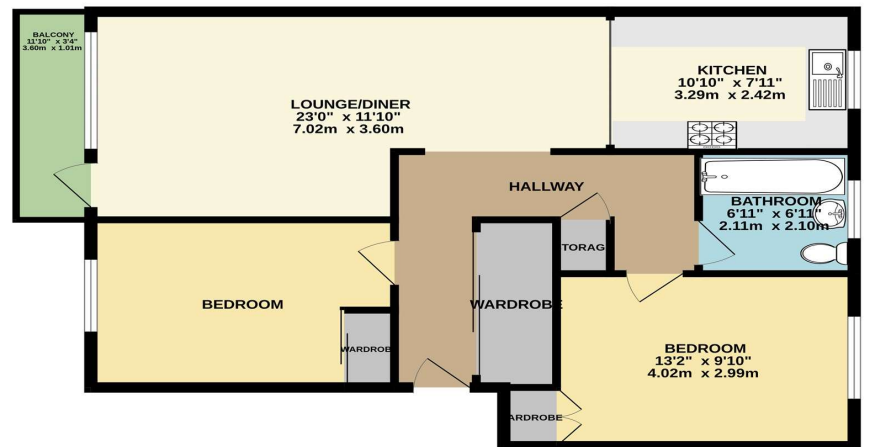
We are delighted to present this modern and stylish two-bedroom apartment located on the top floor, a short distance to the town centre. This property boasts a bright and airy atmosphere, perfect for those who enjoy natural light and a spacious living environment.

The apartment comprises of two bedrooms, a modern bathroom, a reception room, and a fully fitted kitchen. The property is offered part-furnished, providing a convenient move-in solution for tenants.

The apartment also benefits from a garage, ad-hoc parking, and a balcony, perfect for enjoying the fresh air. There is a large storage cupboard and fitted wardrobes in both bedrooms which provide ample storage space.

In summary, this is a fantastic opportunity to rent a modern and stylish two-bedroom apartment in a prime location. Don't miss out on this rare opportunity, contact us today to arrange a viewing.

GROUND FLOOR



This Floor Plan is for guidance only and is NOT to SCALE
 Made with Microplot ©2024

PLEASE NOTE:

Measurements quoted are approximate and for guidance only. Fixtures, fittings, services & appliances have not been tested and therefore no guarantee can be given that they are in working order. Images have been produced for information and it cannot be inferred that any item shown is included with the property. These particulars are believed to be correct but their accuracy is not guaranteed and they do not constitute an offer or form part of a contract. Solicitors are specifically requested to verify the sales particulars details in the pre-contract enquiries, in particular: price, local and other searches.

Goadsby & Harding (Residential) Ltd

Registered Office: 99 Holdenhurst Road, Bournemouth, Dorset BH8 8DY Registered in England No. 1871280

01202 544644
 bournemouthlettings@goadsby.com

114 Old Christchurch Road
 Bournemouth, Dorset
 BH1 1LU