

Apartment 124 Latitude, 155 Bromsgrove Street

Birmingham, B5 6AF

Best Offers Around £139,950®



1



1

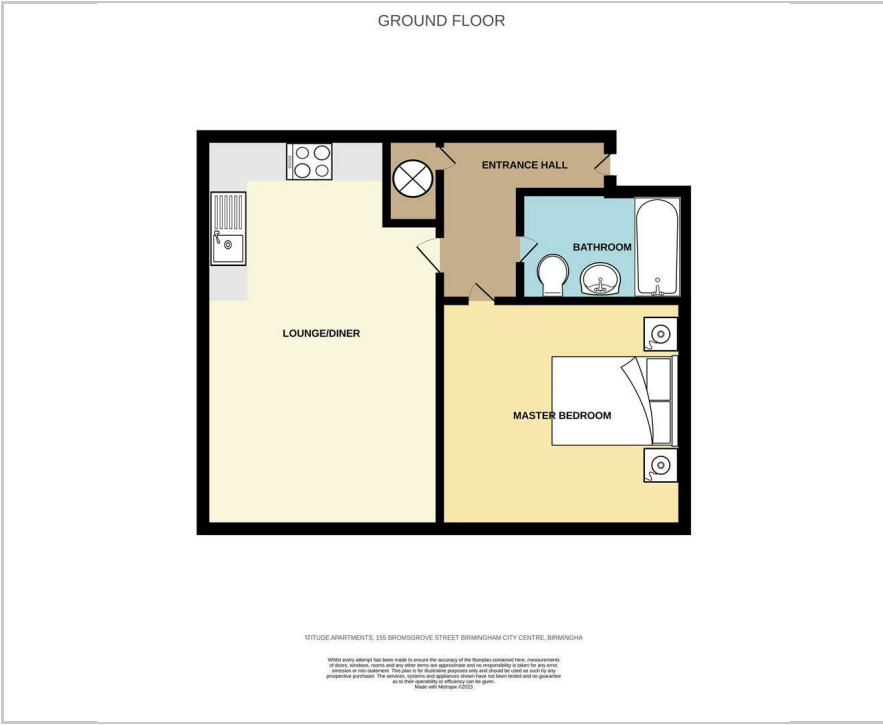


1



C®

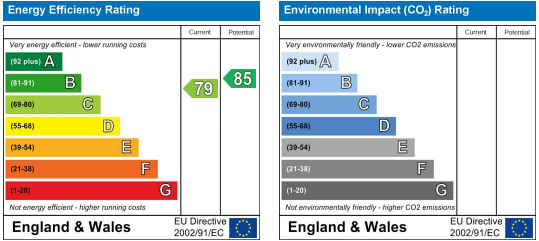
Floor Plan



Area Map



Energy Efficiency Graph



Viewing

Please contact our LV PROPERTY Office on 01212857575 if you wish to arrange a viewing appointment for this property or require further information.

- Large One Bedroom Apartment
- Fantastic Investment Opportunity
- EWS1 Granted
- Secure Fob Entry
- Fitted Kitchen
- Secure Allocated Parking
- Juliette Balcony
- Located in Sought-After China Town
- Upper Floor
- Service Charge £1,780 p.a/ Ground Rent £230 p.a (approx.)



Step into luxury city living in the heart of Birmingham's vibrant Chinatown, where culture, convenience, and capital growth collide. This sophisticated one-bedroom apartment is more than just a home—it's a lifestyle statement, designed for those who thrive in the energy of the city.

Perched in an enviable location, this sleek, modern apartment offers an open-plan living space bathed in natural light, with floor-to-ceiling windows framing the dynamic cityscape. The high-spec kitchen flows seamlessly into the lounge, creating the perfect spot for hosting, unwinding, or embracing the buzz of the city below. The spacious bedroom is a sanctuary of calm, complemented by a luxurious bathroom with premium finishes.

Location is everything. Step outside, and you're in the epicentre of Birmingham's cultural and culinary scene —Michelin-star restaurants, artisan coffee shops, The Hippodrome Theatre, and The Bullring, all just moments away. Grand Central Station is within walking distance, connecting you to London in just over an hour.

With strong rental demand and the city's ongoing regeneration, this property offers impressive yields and capital appreciation potential. Whether you're a first-time buyer, savvy investor, or city professional, this is a rare chance to own a slice of Birmingham's future.



These particulars, whilst believed to be accurate are set out as a general outline only for guidance and do not constitute any part of an offer or contract. Intending purchasers should not rely on them as statements of representation of fact, but must satisfy themselves by inspection or otherwise as to their accuracy. No person in this firm's employment has the authority to make or give any representation or warranty in respect of the property.



0121 285 7575
www.lvproperty.co.uk

157c Warstone Lane, Jewellery Quarter,
Birmingham, West Midlands, B18 6NZ