



LV PROPERTY.CO.UK®



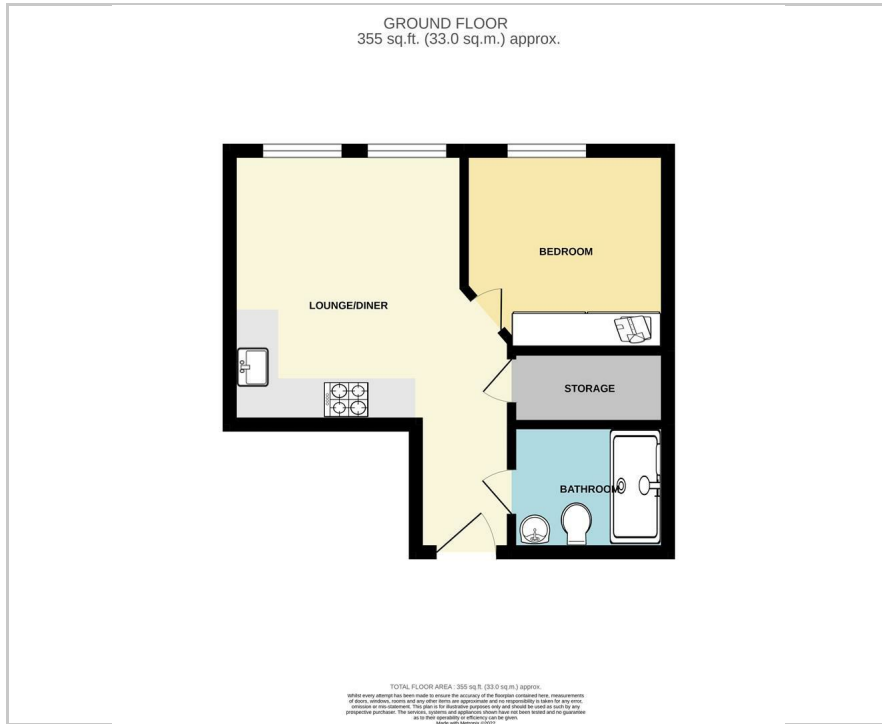
Flat 606 Nexus Point 10 Edwards Road

Birmingham, B24 9EQ

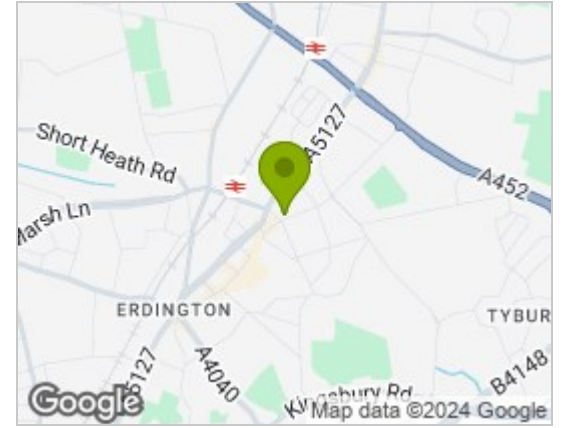
Best Offers Around £120,000



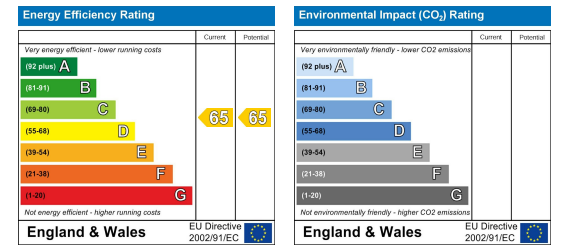
Floor Plan



Area Map



Energy Efficiency Graph



Viewing

Please contact our LV PROPERTY Office on 01212857575 if you wish to arrange a viewing appointment for this property or require further information.

- INVESTORS ONLY
- ONE BEDROOM APARTMENT
- LARGE MODERN DEVELOPMENT
- STRONG YIELDS
- GREAT TRANSPORT LINKS
- CLOSE TO AMENITIES
- OPEN PLAN LIVING / DINING / KITCHEN
- GREAT INVESTMENT/ FIRST HOME
- INTEGRATED APPLIANCES

LV PROPERTY is proud to present this beautiful one-bedroom apartment in Erdington. This development is generating strong demand from owner-occupiers and also investors looking to take advantage of the consistent Rental Yields and solid Capital Growth, in an area with great investment and job creation.

The bedroom comes with a fitted wardrobe and a large window, great for natural light. Alongside a kitchen with fitted appliances and an open plan living room/kitchen, connected to the beautifully finished bathroom.

The property is fitted with entry systems you can rest assured that your apartment is safe and protected. Not only this, but the development will also benefit from easy access to the business and financial districts of the city centre including the new HSBC HQ and Deutsche Bank.

Within the Erdington constituency, there are more than 35,000 jobs, but the town's proximity to Central Birmingham means that tenants will have access to more than one million jobs and the largest business and professional services hub in any regional city, with a particular focus on the finance and legal sectors.

In addition to all this, residents benefit from numerous local leisure facilities including the new Erdington Leisure Centre, which includes a state-of-the-art gym and 25-metre pool. The town is also home to Erdington Abbey and Highclare School, one of the top independent schools in the West Midlands.



These particulars, whilst believed to be accurate are set out as a general outline only for guidance and do not constitute any part of an offer or contract. Intending purchasers should not rely on them as statements of representation of fact, but must satisfy themselves by inspection or otherwise as to their accuracy. No person in this firm's employment has the authority to make or give any representation or warranty in respect of the property.



0121 285 7575
www.lvproperty.co.uk

157c Warstone Lane, Jewellery Quarter,
Birmingham, West Midlands, B18 6NZ