



22A Mantella Lofts Pemberton Street

Birmingham, B18 6NY

£1,450 PCM



2



2



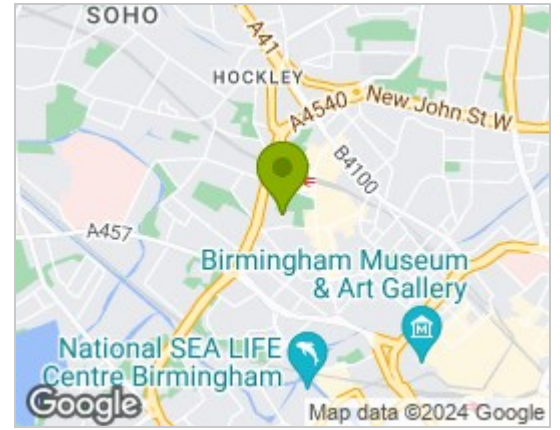
1



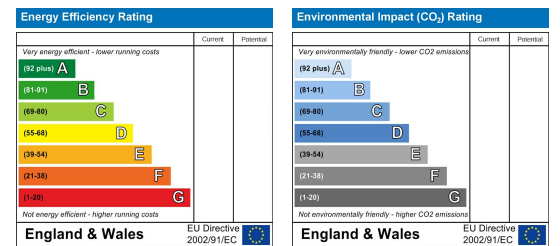
Floor Plan



Area Map



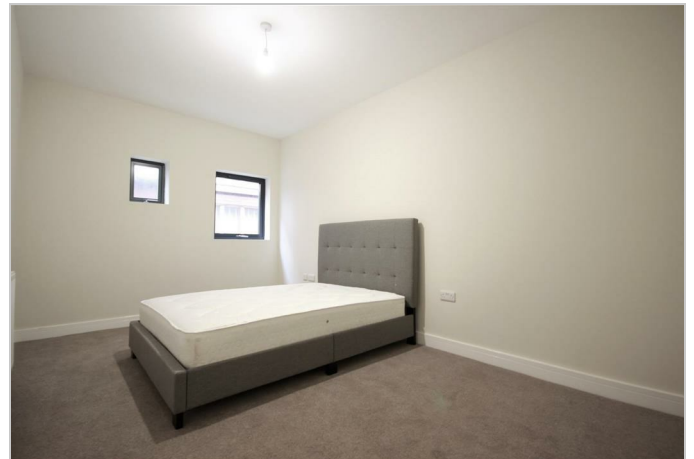
Energy Efficiency Graph



Viewing

Please contact our LV PROPERTY Office on 01212857575 if you wish to arrange a viewing appointment for this property or require further information.

- UNFURNISHED
- AVAILABLE NOW
- PARKING AVAILABLE
- TWO DOUBLE BEDROOMS
- TWO FAMILY BATHROOMS
- CENTRAL HEATING
- MODERN FINISH



LV PROPERTY are pleased to present a luxury new build apartment offering a High Quality Finish and beautiful High Ceilings throughout. This property comprises of a open plan kitchen with modern integrated appliances and breakfast bar.

A spacious dining & living area ideal for entertaining as well as an en-suite to the master bedroom, and family bathroom just off the second double bedroom.

The gorgeous new build development is located in the Jewellery Quarter just a short walk away from Birmingham City Centre, as well as being on the door step to all of the exciting features the Jewellery Quarter & St Paul's Square have to offer. Anyone looking for the country life in the city will love this.



These particulars, whilst believed to be accurate are set out as a general outline only for guidance and do not constitute any part of an offer or contract. Intending purchasers should not rely on them as statements of representation of fact, but must satisfy themselves by inspection or otherwise as to their accuracy. No person in this firm's employment has the authority to make or give any representation or warranty in respect of the property.



0121 285 7575
www.lvproperty.co.uk

157c Warstone Lane, Jewellery Quarter,
Birmingham, West Midlands, B18 6NZ