



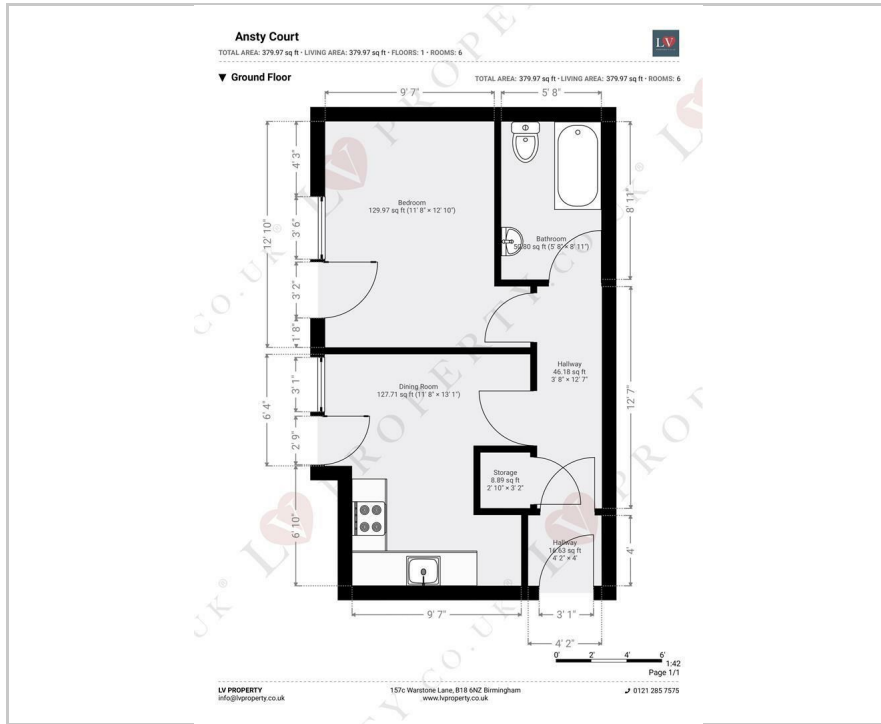
Apartment 10 Ansty Court

Birmingham, B3 1UR

Offers Over £145,000



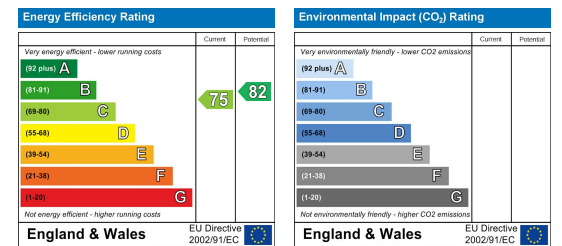
Floor Plan



Area Map



Energy Efficiency Graph



Viewing

Please contact our LV PROPERTY Office on 01212857575 if you wish to arrange a viewing appointment for this property or require further information.

- ONE BEDROOM
- SOUTH FACING APARTMENT
- INVESTMENT OPPORTUNITY
- JEWELLERY QUARTER LOCATION
- 2ND FLOOR APARTMENT
- 7.5% YIELD
- GREAT TRANSPORT LINKS
- SIMILAR PROPERTIES REQUIRED

LV PROPERTY are proud to present, Ansty Court, a jewel in the Heart of Birmingham's Historic Jewellery Quarter. Nestled in the vibrant heart of Birmingham's iconic Jewellery Quarter, a true gem of an opportunity awaits discerning investors and visionary owner-occupiers. Presenting a lavish one-bedroom apartment that seamlessly blends luxury, location, and lifestyle, 10 Ansty Court invites you to embrace a new standard of urban living.

This exquisite apartment offers an unrivalled location, allowing you to immerse yourself in the rich history and contemporary vibrancy of the Jewellery Quarter. From artisanal boutiques to trendy cafes, from art galleries to bustling markets, every aspect of urban living is at your doorstep.

Step into a world of refined sophistication as you enter this exquisitely designed apartment. High ceilings and an abundance of natural light create an airy ambiance, while the seamless fusion of modern aesthetics with classic charm ensures a timeless allure. The open-concept kitchen is a masterpiece, boasting top-of-the-line appliances, sleek cabinetry, and premium finishes, transforming every meal into a culinary experience.

The spacious bedroom is your private sanctuary, offering a haven of relaxation after a bustling day. Calm colors and carefully chosen textures create an oasis of serenity where restful nights are guaranteed. Indulge in the spa-like bathroom featuring elegant fixtures and a meticulously designed layout for a daily ritual of

These particulars, whilst believed to be accurate are set out as a general outline only for guidance and do not constitute any part of an offer or contract. Intending purchasers should not rely on them as statements of representation of fact, but must satisfy themselves by inspection or otherwise as to their accuracy. No person in this firm's employment has the authority to make or give any representation or warranty in respect of the property.



0121 285 7575
www.lvproperty.co.uk

157c Warstone Lane, Jewellery Quarter,
Birmingham, West Midlands, B18 6NZ