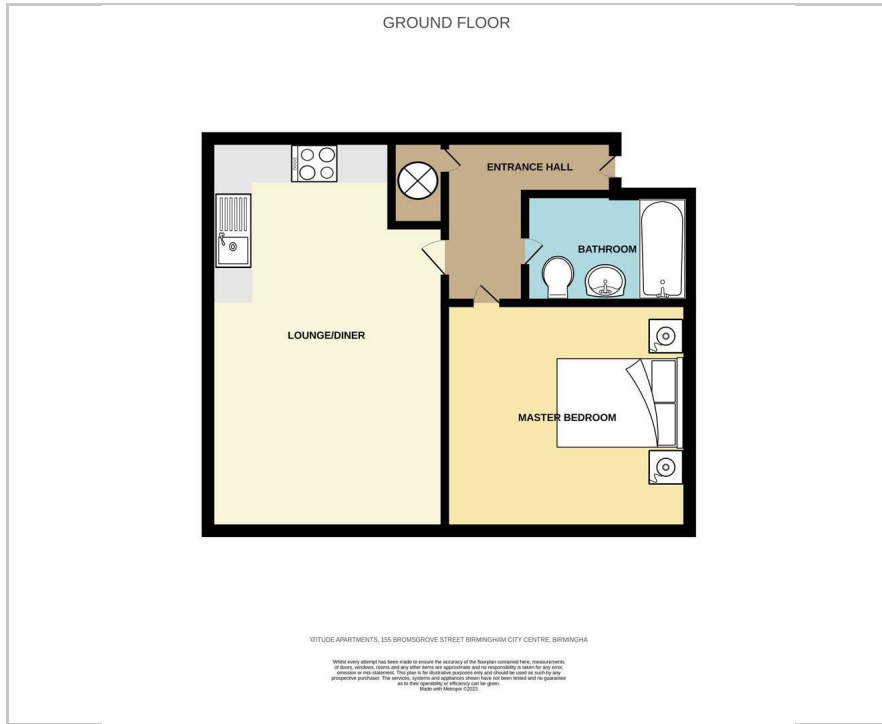


Apartment 124 Latitude, 155 Bromsgrove Street

Birmingham, B5 6AF

Offers Over £140,000

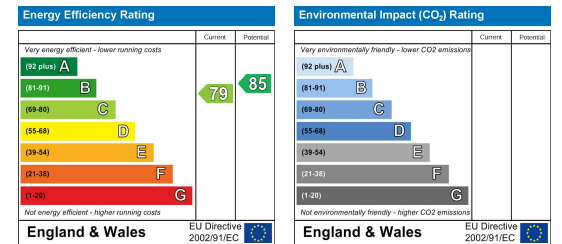
## Floor Plan



## Area Map



## Energy Efficiency Graph



## Viewing

Please contact our LV PROPERTY Office on 01212857575 if you wish to arrange a viewing appointment for this property or require further information.

- ONE BEDROOM APARTMENT
- 8% YIELD ACHIEVABLE
- EWS1 CERTIFICATE PASSED
- SIMILAR PROPERTIES REQUIRED
- ALLOCATED PARKING SPACE
- JULIET BALCONY
- CLOSE TO TRANSPORT LINKS



Introducing Latitude, an exceptional property in Birmingham city centre. Located at 155 Bromsgrove Street, Birmingham, West Midlands, B5 6AF, this one-bedroom apartment offers stylish and contemporary living.

Step into Latitude and be greeted by a spacious reception room, designed for comfort and functionality. Natural light fills the room, creating an inviting atmosphere. A Juliet balcony enhances the living space, providing a charming outdoor spot.

The bedroom offers a tranquil retreat with ample storage space. Modern touches blend comfort and sophistication. A well-appointed bathroom adds to the apartment's appeal.

One standout feature is the included parking space, a sought-after convenience in the city centre. No more worries about parking or fees.

Latitude offers additional amenities, including 24-hour concierge service and communal areas for socializing.

Situated in the heart of Birmingham, Latitude provides unparalleled access to shops, restaurants, and entertainment. Excellent transportation links make commuting easy.



These particulars, whilst believed to be accurate are set out as a general outline only for guidance and do not constitute any part of an offer or contract. Intending purchasers should not rely on them as statements of representation of fact, but must satisfy themselves by inspection or otherwise as to their accuracy. No person in this firm's employment has the authority to make or give any representation or warranty in respect of the property.



0121 285 7575  
www.lvproperty.co.uk

157c Warstone Lane, Jewellery Quarter,  
Birmingham, West Midlands, B18 6NZ