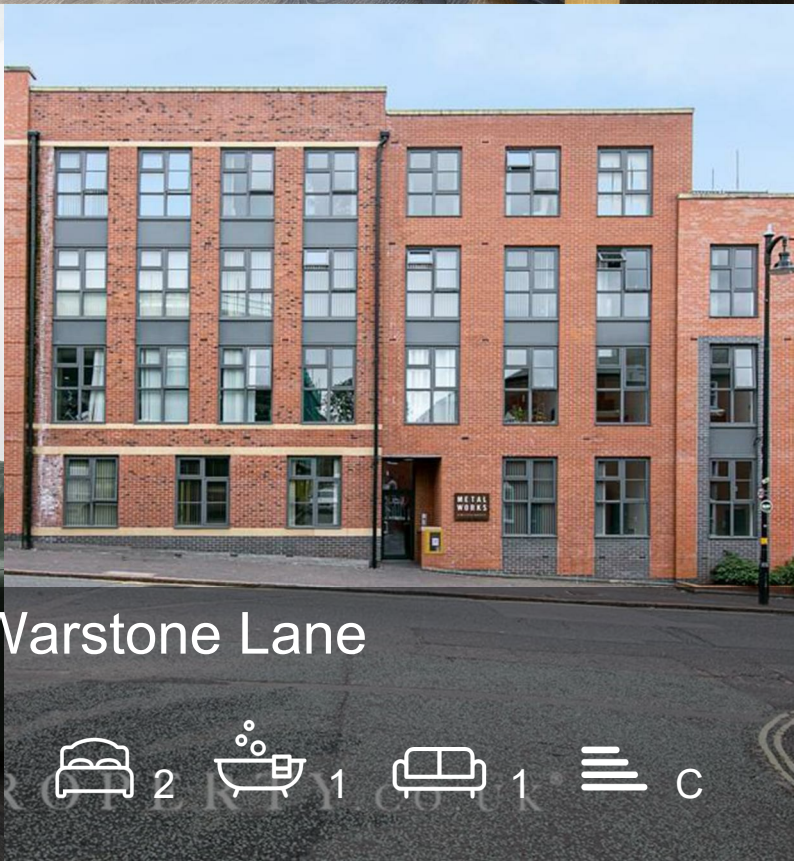




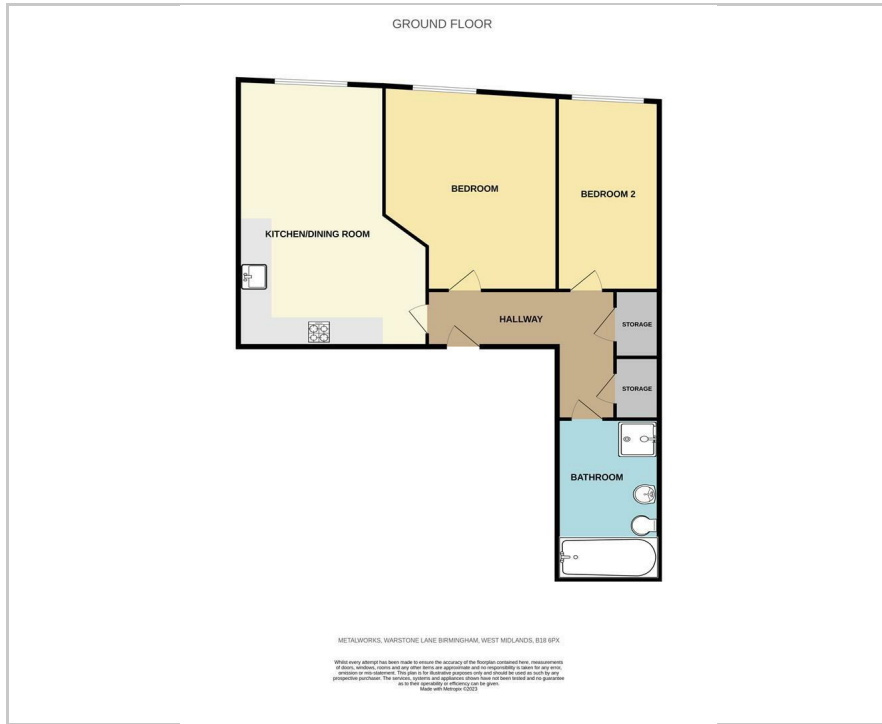
Apartment 22 Metalworks, Warstone Lane

Birmingham, B18 6PX

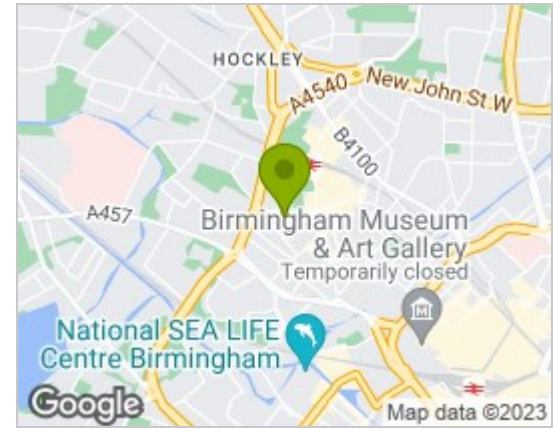
Offers Over £225,000



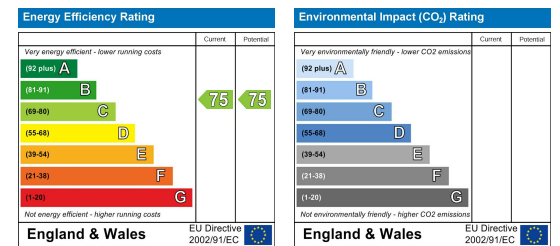
Floor Plan



Area Map



Energy Efficiency Graph



Viewing

Please contact our LV PROPERTY Office on 01212857575 if you wish to arrange a viewing appointment for this property or require further information.

- SOUGHT AFTER JQ
- SECURE ALLOCATED LOCATION
- FULLY FITTED KITCHEN
- GREAT TRANSPORT ROUTES
- NO CHAIN
- CLOSE TO LOCAL AMENITIES

LV PROPERTY are proud to present this beautiful two bedroom apartment located in the Metalworks development. The apartment benefits from having open plan living area/fitted kitchen with integrated appliances, two bedrooms and a stylish bathroom as well as benefit of a secure allocated parking space.

EWS1 CERTIFICATE GRANTED

This property benefits from 1 allocated parking space. This apartment provides you with the opportunity of living in the heart of the city. The metalworks offer a securely gated development with architecturally designed communal gardens. The interior designed living spaces provide a high-end contemporary finish and include grey-oak timber-effect flooring with matching grey oak doors, fully fitted kitchens with integrated appliances and large double glazed windows for natural light. Fully carpeted and spacious bedrooms. Metalworks' bathrooms feature a full size pressed steel bath, Porcelanosa vanity unit with under-sink storage, fitted wall mirrors and a separate shower cubicle with a glass and chrome door. Ceramic Porcelanosa floor and wall tiles further compliment the apartments' stylish design.

Metalworks benefits from excellent transport links with the M6, M5, M42 and A38 all easily accessible. Metalworks is also located within close proximity of Jewellery Quarter Train Station (0.3 miles), Birmingham Snow Hill (approx. 1 mile), Birmingham New Street (approx. 1.5 miles) and Birmingham Moor Street (approx. 2.5 miles)



These particulars, whilst believed to be accurate are set out as a general outline only for guidance and do not constitute any part of an offer or contract. Intending purchasers should not rely on them as statements of representation of fact, but must satisfy themselves by inspection or otherwise as to their accuracy. No person in this firm's employment has the authority to make or give any representation or warranty in respect of the property.



0121 285 7575
www.lvproperty.co.uk

157c Warstone Lane, Jewellery Quarter,
Birmingham, West Midlands, B18 6NZ