



King Edward Road, Northampton    **£180,000**

 **YOUR MOVE**  
Hobin Roberts







King Edward Road,  
Northampton

**£180,000**



**EPC Rating D**  
**For full EPC please contact the branch**

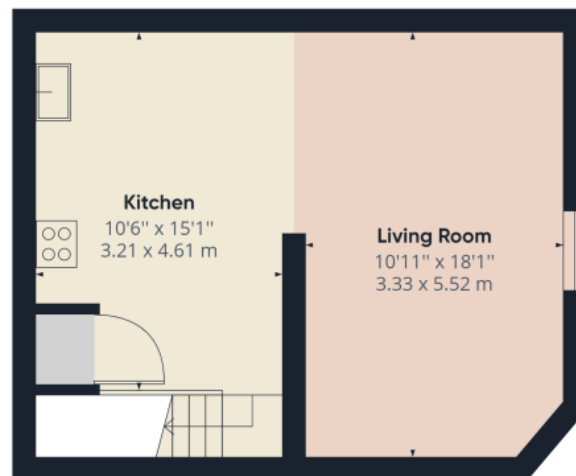
## Property Description

**\*\* 360 VIRTUAL TOUR \*\*** Offered to the market with no onward chain is this very well presented two bedroom duplex apartment, situated within walking distance of Abington Park and the Northampton General Hospital. This property very cleverly occupies both the ground and basement levels of this block. On entering the property stairs lead down to the open plan kitchen/breakfast room with built in white goods, a range of base and eye level units and a storage cupboard. The living/dining room has plenty of space for a sofa suite and dining table and benefits from a single window allowing natural light to flood in. Upstairs, this property also boasts two double bedrooms and a fitted three piece family bathroom with shower over the bath. Externally, the communal area is well kept by all occupants and offers security off the main street. EPC Rating D. **LOCATION:** King Edward Road is situated in the heart of Abington and

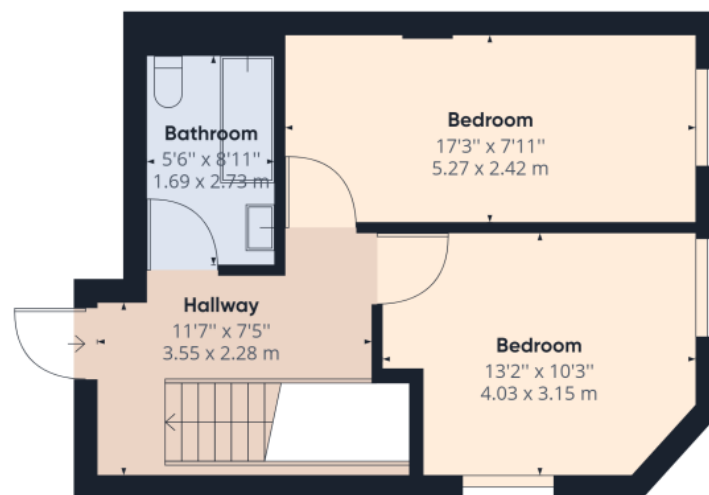
## Our View

### Location

King Edward Road is situated in the heart of Abington and runs from Lutterworth Road down to Park Avenue South. Nearby the Wellingborough Road runs through the heart of Abington and offers numerous designer shops, restaurants, bars and local supermarkets. Northampton Town Centre is approximately 1.8 miles away and the Northampton Train Station is a further 0.5 miles away, with trains running to London Euston and Birmingham New Street. The A45 is located within 1.5 miles of Abington, providing excellent links to the M1. Schools in the area include Northampton School For Boys, Barry Road Primary School and Abington Vale Primary School. Finally, if you are a cricket fan then Abington is the place



Ground Floor Building 1



Floor 1 Building 1

Approximate total area<sup>(1)</sup>

787.11 ft<sup>2</sup>

73.12 m<sup>2</sup>

(1) Excluding balconies and terraces

While every attempt has been made to ensure accuracy, all measurements are approximate, not to scale. This floor plan is for illustrative purposes only.

GIRAFFE360

IMPORTANT NOTE TO PURCHASERS: We endeavour to make our sales particulars accurate and reliable, however, they do not constitute or form part of an offer or any contract and none is to be relied upon as statements of representation or fact. The services, systems and appliances listed in this specification have not been tested by us and no guarantee as to their operating ability or efficiency is given. All measurements have been taken as guide to prospective buyers only, and are not precise. Floor plans where included are not to scale and accuracy is not guaranteed. If you require clarification or further information on any points, please contact us, especially if you are travelling some distance to view. Fixtures and fittings other than those mentioned are to be agreed with the seller.

The above details have been submitted to our clients but at the moment have not been approved by them and we therefore cannot guarantee their accuracy and they are distributed on this basis. Please ensure that you have a copy of our approved details before committing yourself to any

YOUR MOVE Hobin Roberts is the trading name of Hobin Roberts Limited, registered company number 5075787, registered office 10 Silver Street, Kettering, Northants, NN16 0BN.  
YOUR MOVE Hobin Roberts is an independently owned and operated business, operated under licence from your-move.co.uk Limited.

\*Calls may be recorded and/or monitored for training and/or security purposes.

309 Wellingborough Road, Northampton, NN1  
4EW

01604 217 222 \* [abington@your-move.co.uk](mailto:abington@your-move.co.uk)



**YOUR MOVE**  
Hobin Roberts