



Boydell Court  
St Johns Wood Park | St John's Wood  
London | NW8

Boydell Court | St Johns Wood Park | St John's Wood | London  
 NW8 6NG

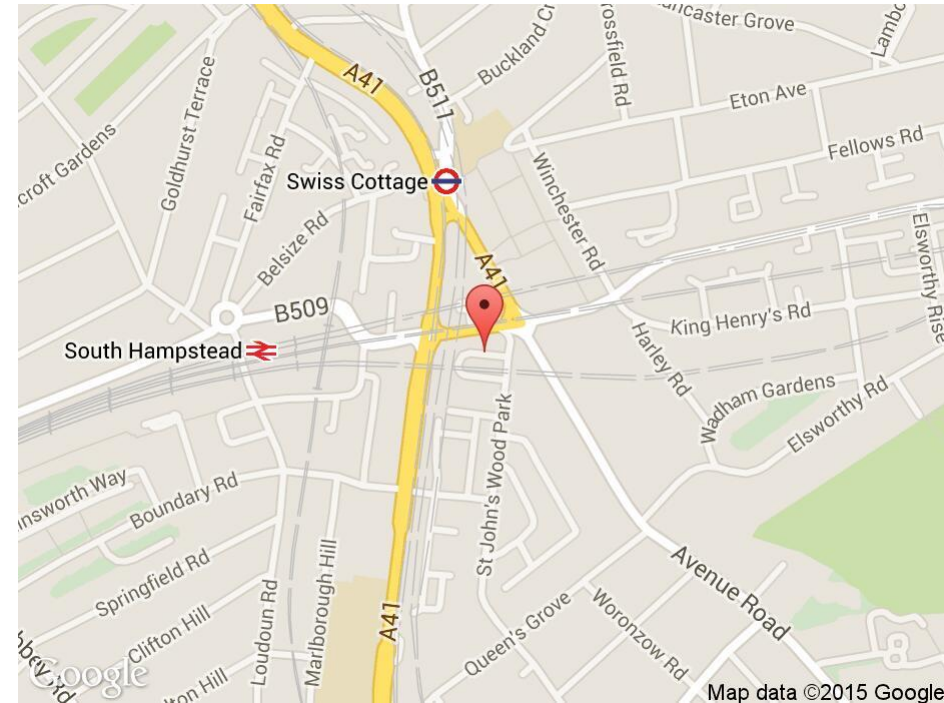
**£1,200 per week**

*A newly refurbished apartment situated within this MODERN DEVELOPMENT with 24 hour concierge.*

*Interior designed, the property comprises THREE DOUBLE BEDROOMS with built in wardrobes, THREE BATHROOMS, spacious reception room, large study and a separate fitted kitchen.*

*Located close to the great amenities of Swiss Cottage (Jubilee Line), a Leisure Centre and Cinema are also moments away.*

*Regent's Park and Primrose Hill are also a short stroll away.*



Energy Efficiency Rating		Environmental Impact (CO <sub>2</sub> ) Rating			
	Current	Potential		Current	Potential
Very energy efficient - lower running costs				Very environmentally friendly - lower CO <sub>2</sub> emissions	
(92-100) <b>A</b>	✗	✗	(92-100) <b>A</b>	✗	✗
(81-91) <b>B</b>			(81-91) <b>B</b>		
(69-80) <b>C</b>			(69-80) <b>C</b>		
(55-68) <b>D</b>			(55-68) <b>D</b>		
(39-54) <b>E</b>			(39-54) <b>E</b>		
(21-38) <b>F</b>			(21-38) <b>F</b>		
(1-20) <b>G</b>			(1-20) <b>G</b>		
Not energy efficient - higher running costs				Not environmentally friendly - higher CO <sub>2</sub> emissions	
<b>England &amp; Wales</b>		EU Directive 2002/91/EC		<b>England &amp; Wales</b>	
				EU Directive 2002/91/EC	



1 Regency Parade Finchley Road | London NW3 5EQ  
Telephone: 020 7449 0449 | Fax: 020 7449 0409  
Email: [service@liv-international.com](mailto:service@liv-international.com) | [www.liv-international.com](http://www.liv-international.com)







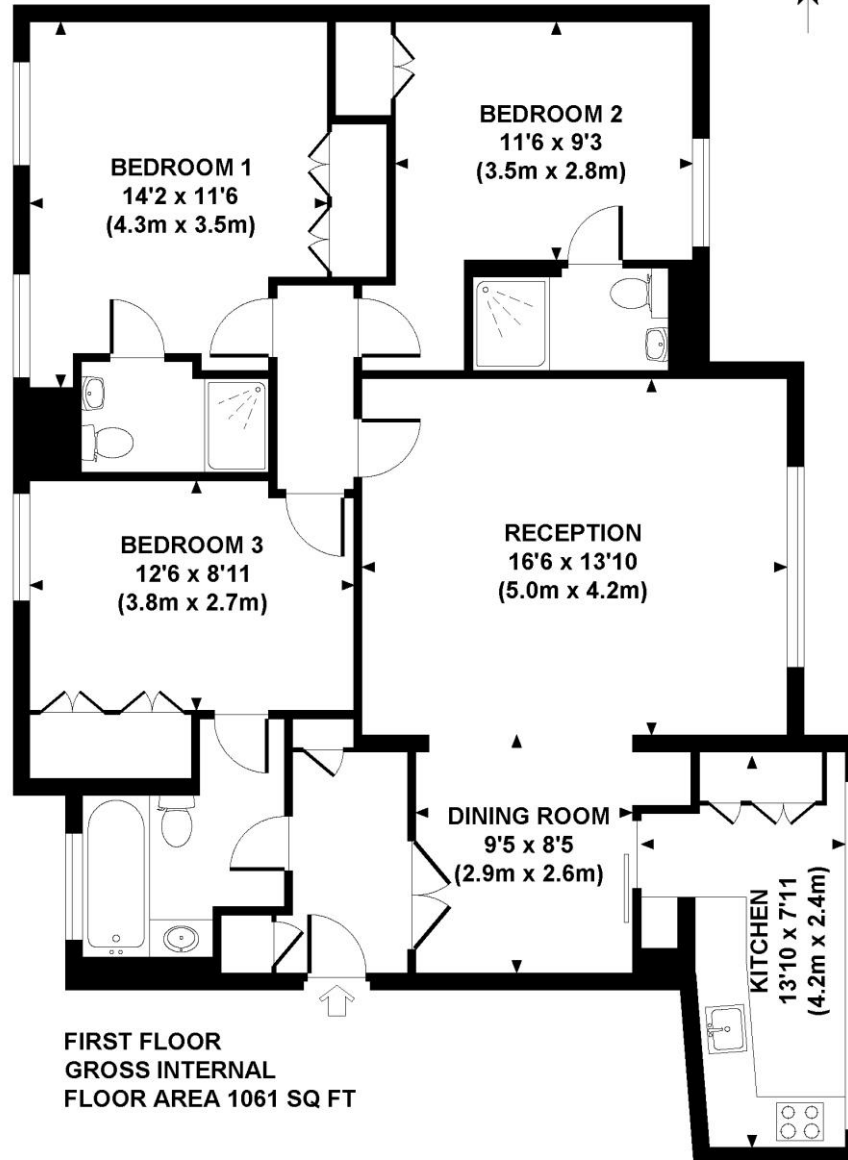






# BOYDELL COURT

Approximate Gross Internal Area 1061 sq ft / 99 sq m



Although every attempt has been made to ensure accuracy, all measurements are approximate.  
The floor plan's for illustrative purposes only and not to scale. Measured in accordance to RICS standards.  
DE-PHOTOGRAPHY.NET

Whilst every care is taken to ensure the accuracy of these details no responsibility for errors or misdescription can be accepted nor is any guarantee offered in respect of the property. These particulars do not constitute any part of an offer or contract.

Liv International is a fast growing **unique** estate agent offering prime residential and commercial properties throughout Northwest and Central London



1 Regency Parade Finchley Road | London NW3 5EQ | Telephone: 020 7449 0449 | Fax: 020 7449 0409 | Email: [service@liv-international.com](mailto:service@liv-international.com) | [www.liv-international.com](http://www.liv-international.com)

Whilst every care is taken to ensure the accuracy of these details no responsibility for errors or disdescription can be accepted nor is any guarantee offered in respect of the property. These particulars do not constitute any part of an offer or contract