



**22 Matlock Green**  
, Matlock, DE4 3BT

**£2,500 PCM**

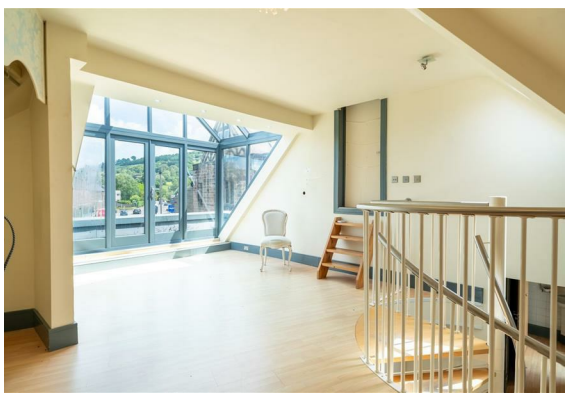
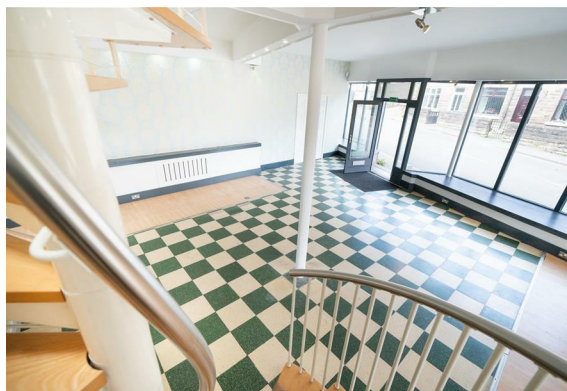
## 22 Matlock Green

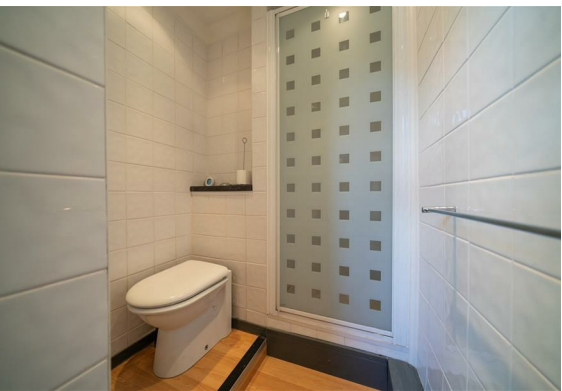
, Matlock, DE4 3BT

Welcome to this charming property located in the heart of Matlock Green, Matlock. This unique property offers a fantastic opportunity for those looking to establish a retail business in a bustling area. With five reception rooms, there is ample space to set up shop and showcase your products or services. The property also features a bathroom for convenience.

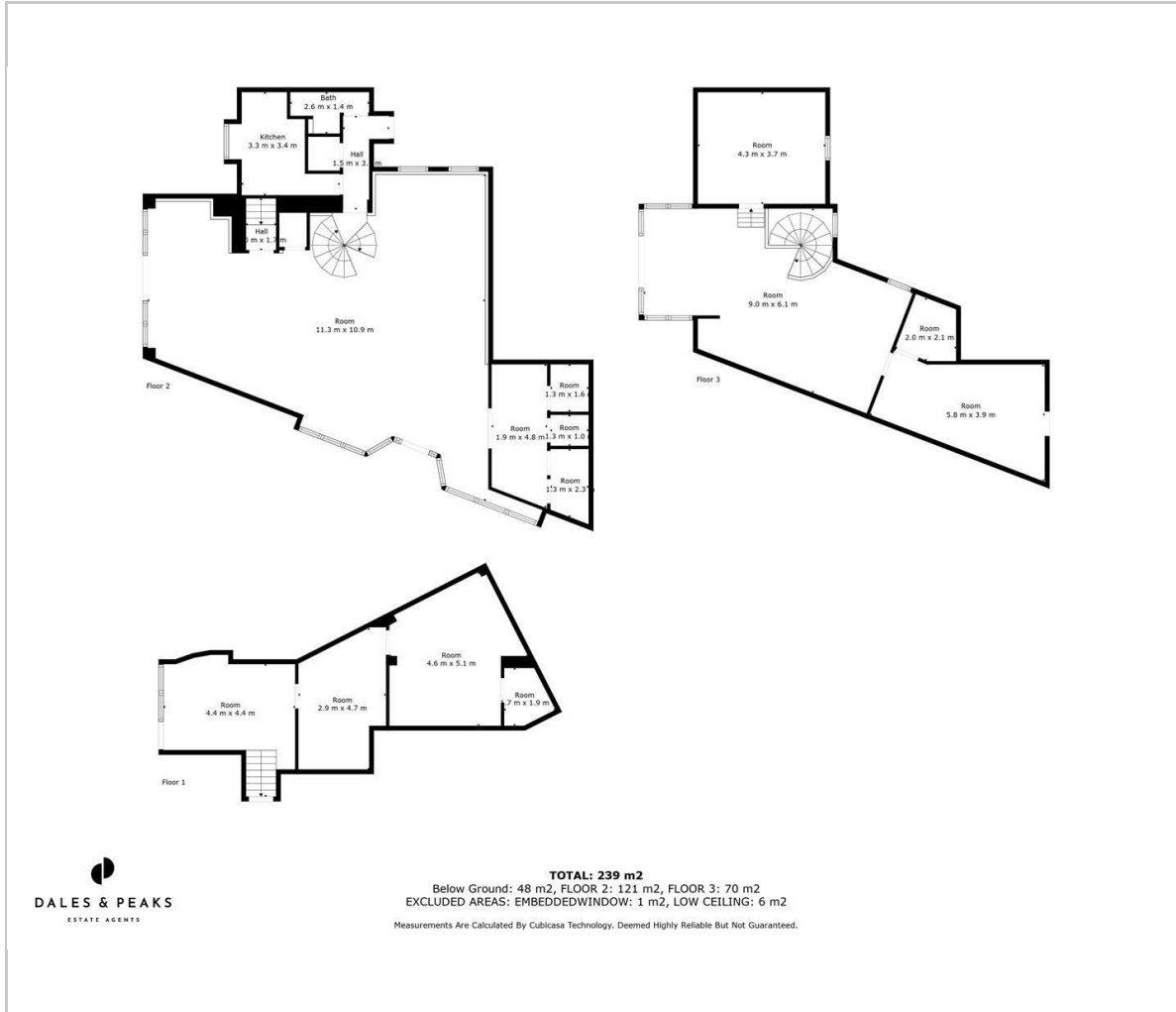
Situated in a prime location, this property is sure to attract a steady flow of foot traffic, providing great visibility for your business. Matlock Green is known for its vibrant community and is a popular destination for locals and tourists alike.

The property offers 239sqm spread over three floors. Whether you're looking to start a new venture or expand an existing one, this property offers endless possibilities. Annual rateable value £7K.





## Floor Plan

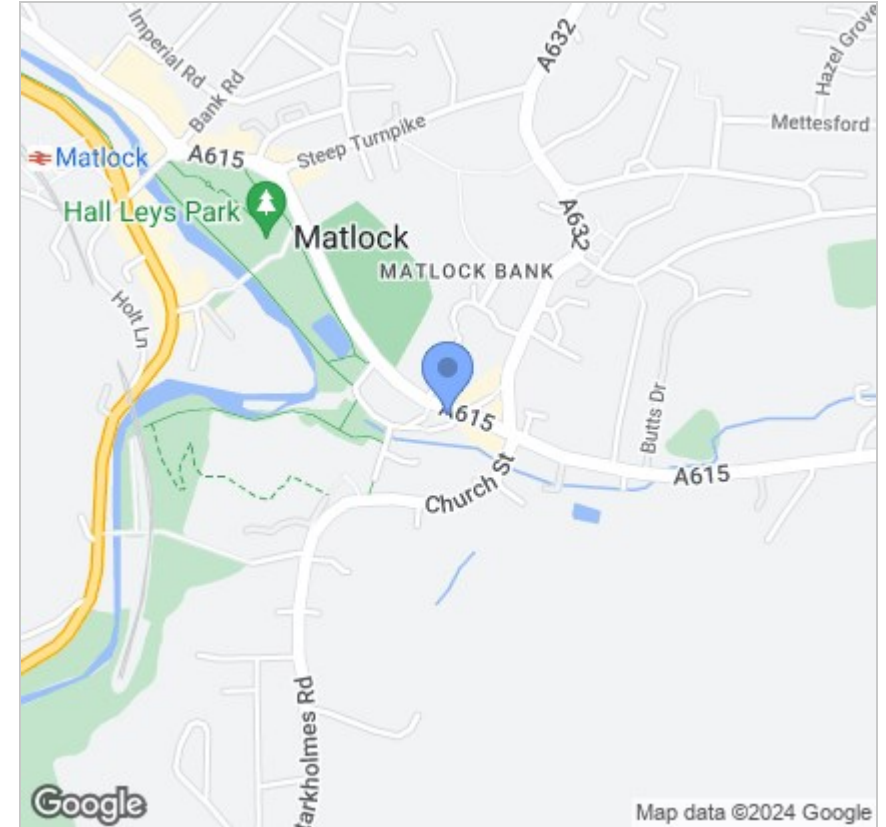


## Viewing

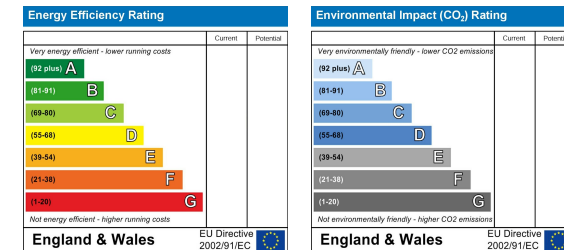
Please contact our Chesterfield Office on 01246 567540 if you wish to arrange a viewing appointment for this property or require further information.

These particulars, whilst believed to be accurate are set out as a general outline only for guidance and do not constitute any part of an offer or contract. Intending purchasers should not rely on them as statements of representation of fact, but must satisfy themselves by inspection or otherwise as to their accuracy. No person in this firm's employment has the authority to make or give any representation or warranty in respect of the property.

## Area Map



## Energy Efficiency Graph



131 Chatsworth Road, Chesterfield, Derbyshire, S40 2AP  
T: 01246 567540



E: info@dalesandpeaks.co.uk  
www.dalesandpeaks.co.uk