

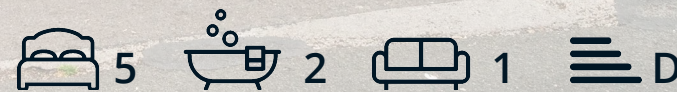


DALES & PEAKS

## 4 Rockvale Villas

Matlock Bath, Matlock, DE4 3NX

£400,000





## 4 Rockvale Villas

Matlock Bath, Matlock, DE4 3NX

Situated in the exceptionally desirable spa town of Matlock Bath, located up a quiet road while being just walking distance from the local amenities is this attractive and deceptively spacious, stone built property. Offering 1402 sqft of tastefully designed accommodation, the property benefits from low maintenance gardens and views of the surrounding countryside.

The ground floor comprises; Entrance hallway, front aspect living room featuring a log burning stove and bay fronted window, modern kitchen with breakfast bar and integrated appliances, open plan to the dining area with doors onto the rear garden. Utility cupboard under the stairs and WC.

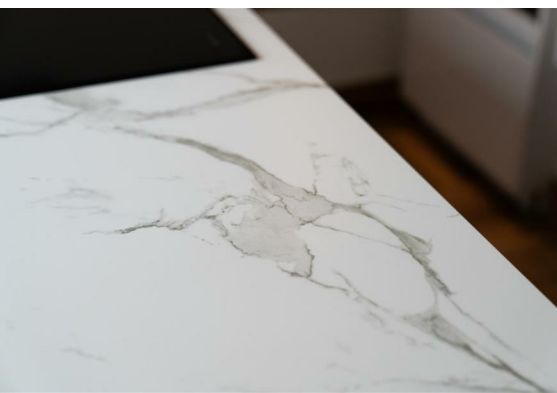
The first floor comprises; Two double bedrooms, a single bedroom and the main family bathroom with roll top bath and separate shower.

The second floor comprises; Master bedroom with Velux windows and ensuite shower room, and fourth double bedroom.

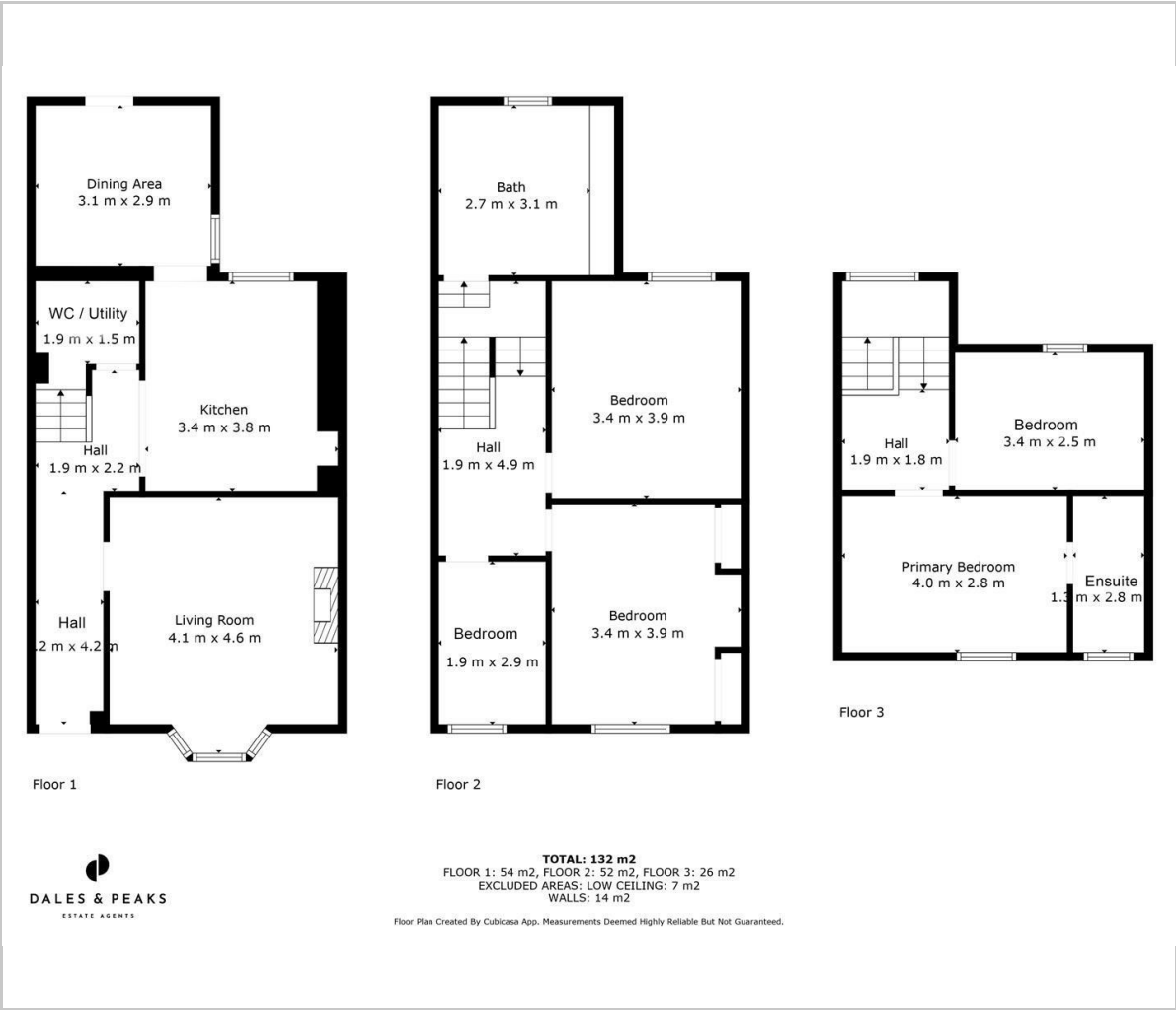
**Dales and Peaks ForwardMove**  
- Please read







Floor Plan



Viewing

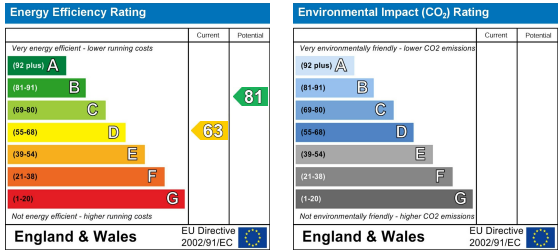
Please contact our Chesterfield Office on 01246 567540 if you wish to arrange a viewing appointment for this property or require further information.

These particulars, whilst believed to be accurate are set out as a general outline only for guidance and do not constitute any part of an offer or contract. Intending purchasers should not rely on them as statements of representation of fact, but must satisfy themselves by inspection or otherwise as to their accuracy. No person in this firms employment has the authority to make or give any representation or warranty in respect of the property.

Area Map



Energy Efficiency Graph



131 Chatsworth Road, Chesterfield, Derbyshire, S40 2AP  
T: 01246 567540



E: info@dalesandpeaks.co.uk  
www.dalesandpeaks.co.uk