



DALES & PEAKS



271 St. Johns Road

, Chesterfield, S41 8PE

£800 PCM





## 271 St. Johns Road

, Chesterfield, S41 8PE

A well presented two bedroom property situated in the popular area of Newbold. Close to local transport links, amenities and Chesterfield Town Centre.

The property briefly comprises of an entrance hallway, spacious lounge, separate utility area and kitchen. Stairs leading to two double bedrooms and bathroom. Externally, the property benefits from a private rear garden.

### Rental information

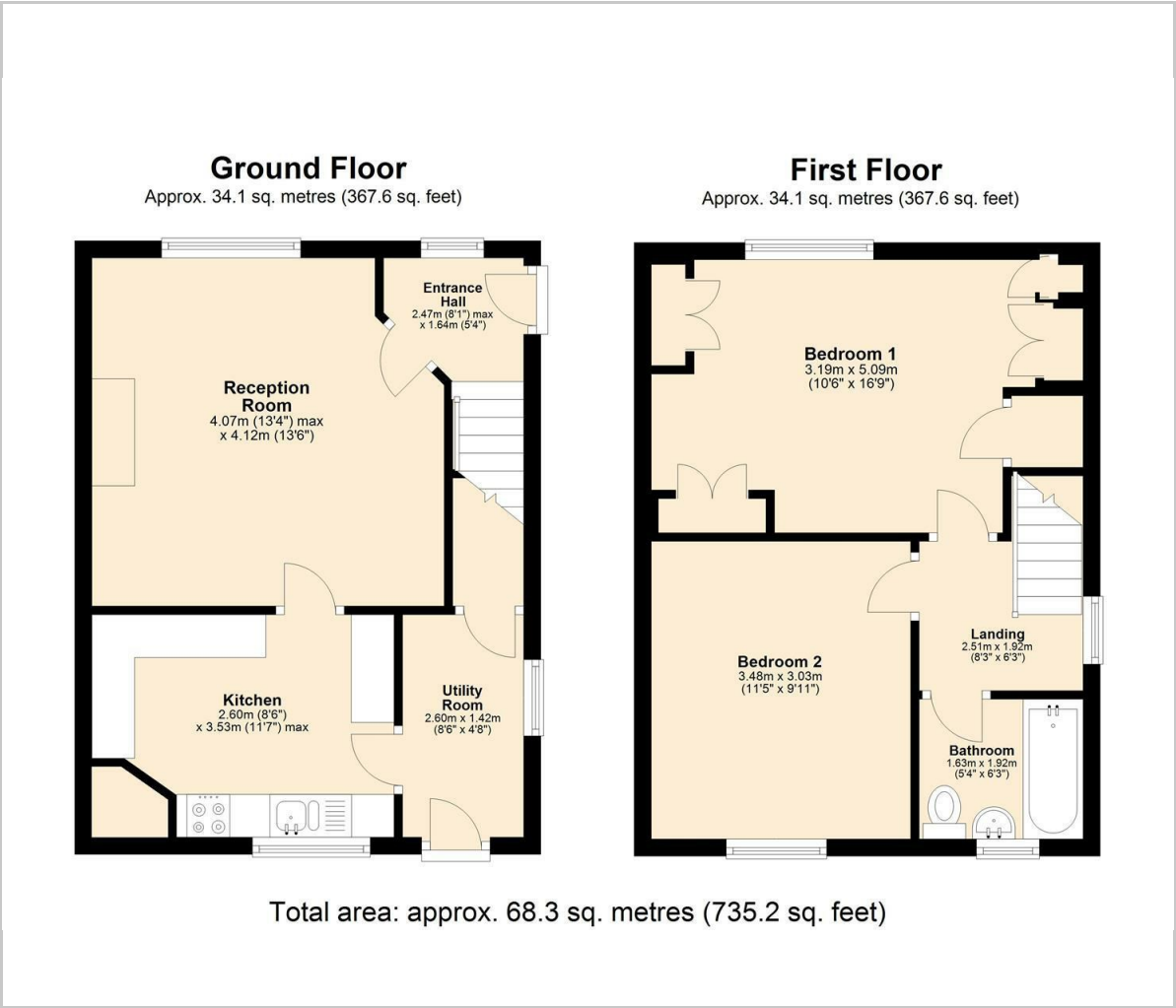








Floor Plan

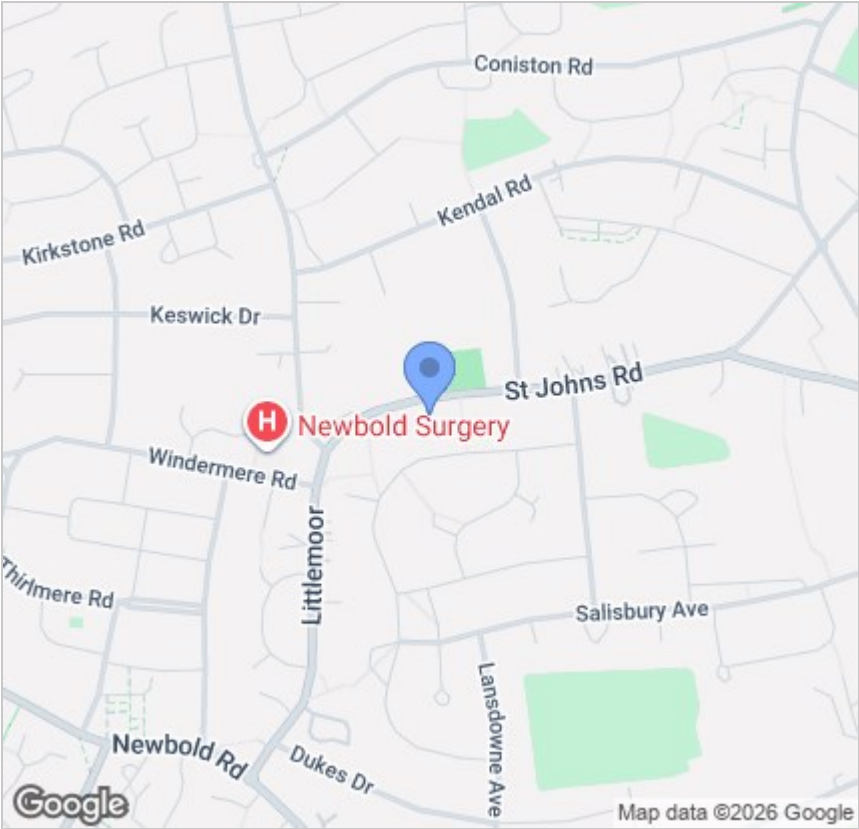


Viewing

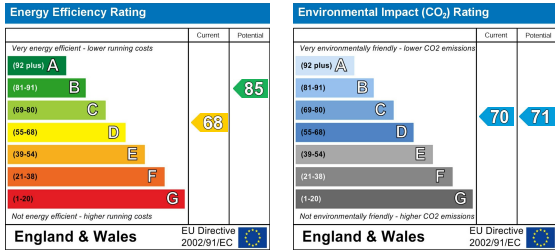
Please contact our Chesterfield Office on 01246 567540 if you wish to arrange a viewing appointment for this property or require further information.

These particulars, whilst believed to be accurate are set out as a general outline only for guidance and do not constitute any part of an offer or contract. Intending purchasers should not rely on them as statements of representation of fact, but must satisfy themselves by inspection or otherwise as to their accuracy. No person in this firms employment has the authority to make or give any representation or warranty in respect of the property.

Area Map



Energy Efficiency Graph



131 Chatsworth Road, Chesterfield, Derbyshire, S40 2AP  
T: 01246 567540



E: info@dalesandpeaks.co.uk  
www.dalesandpeaks.co.uk