



30 Edge Road
, Matlock, DE4 3NH
£525,000



30 Edge Road

, Matlock, DE4 3NH

Situated in the charming town of Matlock, this delightful 3 bedroom detached house offers a perfect blend of comfort and countryside charm. Spanning a 1506 sqft, the property boasts a mature rear garden with two apple trees, a summer house and garden shed, off street parking with electric car charging and views of the surrounding countryside.

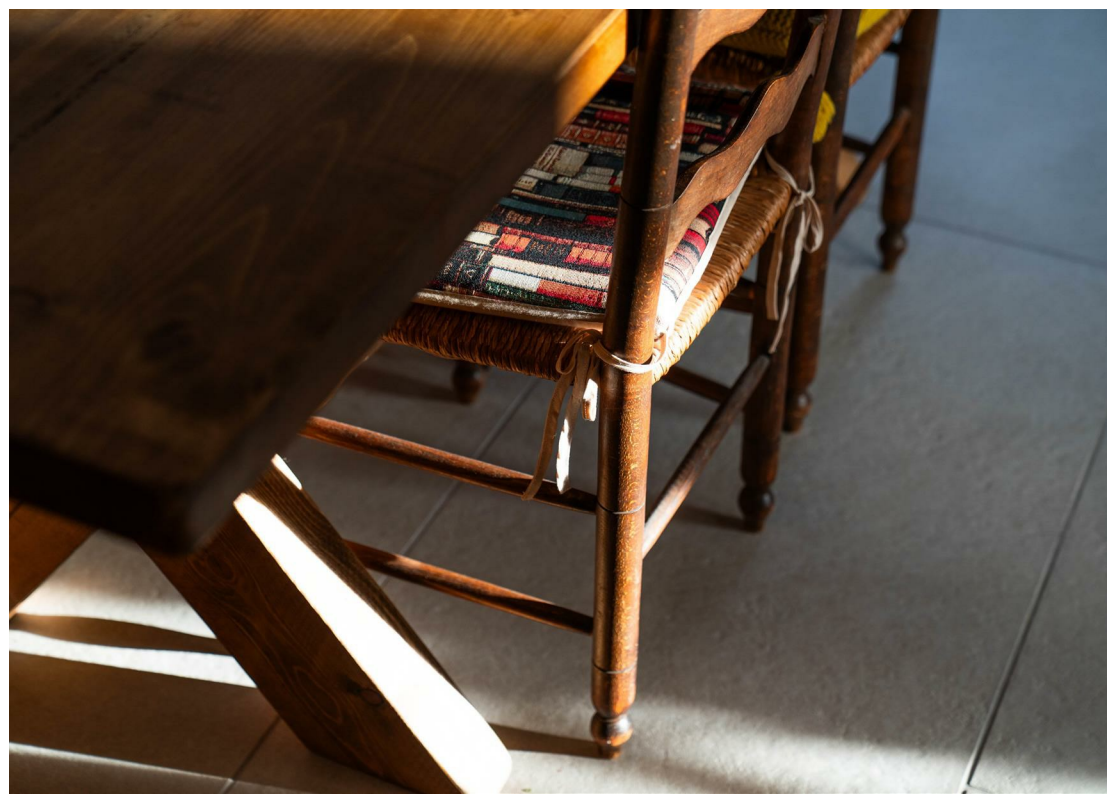
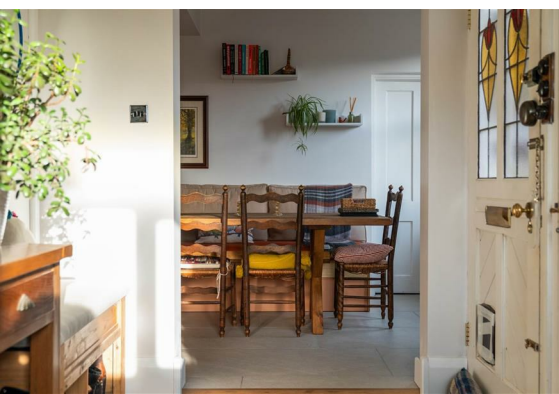
The lower ground floor comprises; Reception room for versatile use as a home office, snug or optional 4th bedroom.

The ground floor comprises; Entrance hallway, dual aspect living room with bay window and gas stove, open plan dining kitchen with integrated appliances and patio doors onto the rear garden. Downstairs WC and shower room.

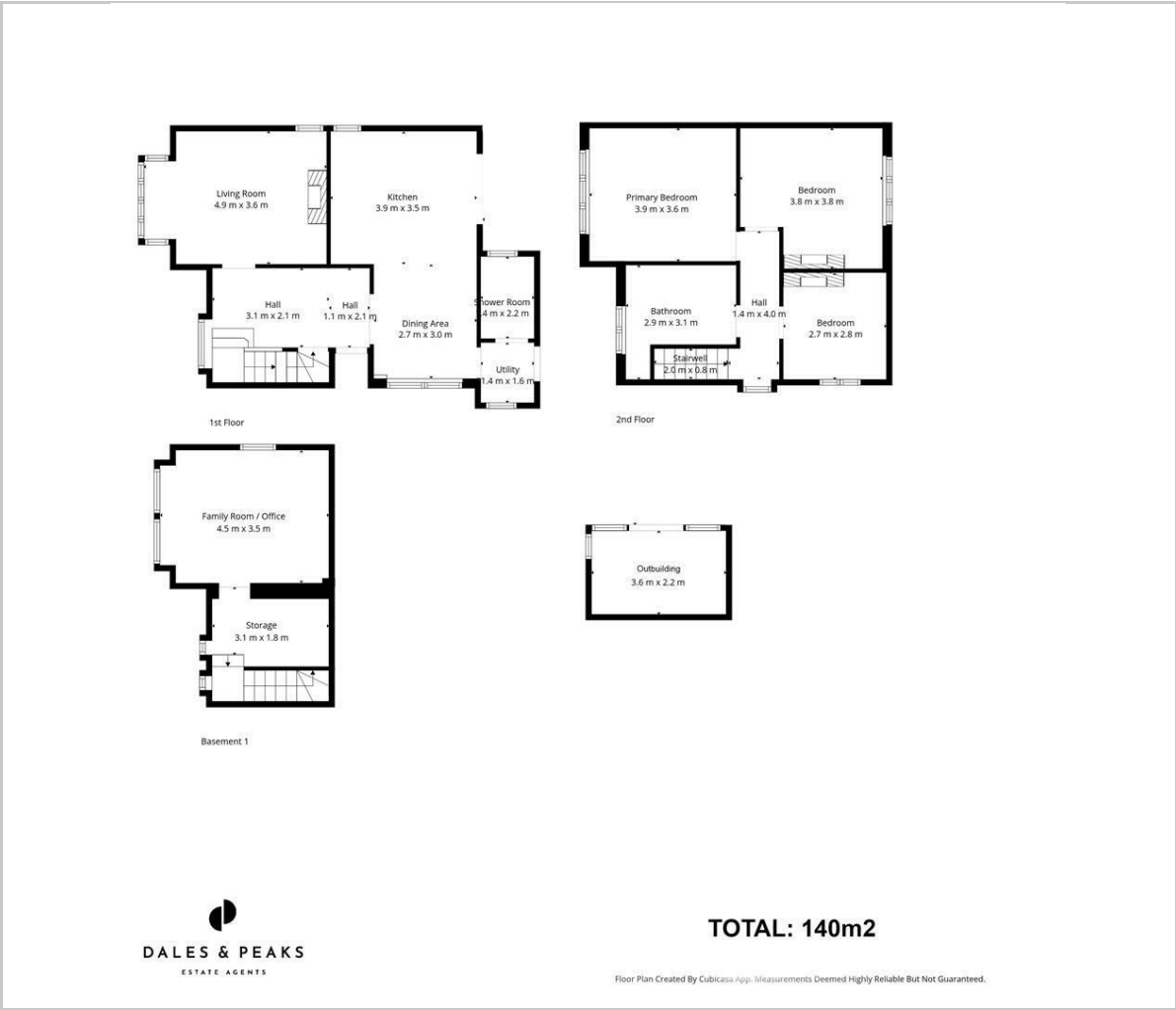
The first floor comprises; Three double bedrooms and bathroom with freestanding bath and separate shower.

Dales and Peaks ForwardMove
- Please read





Floor Plan

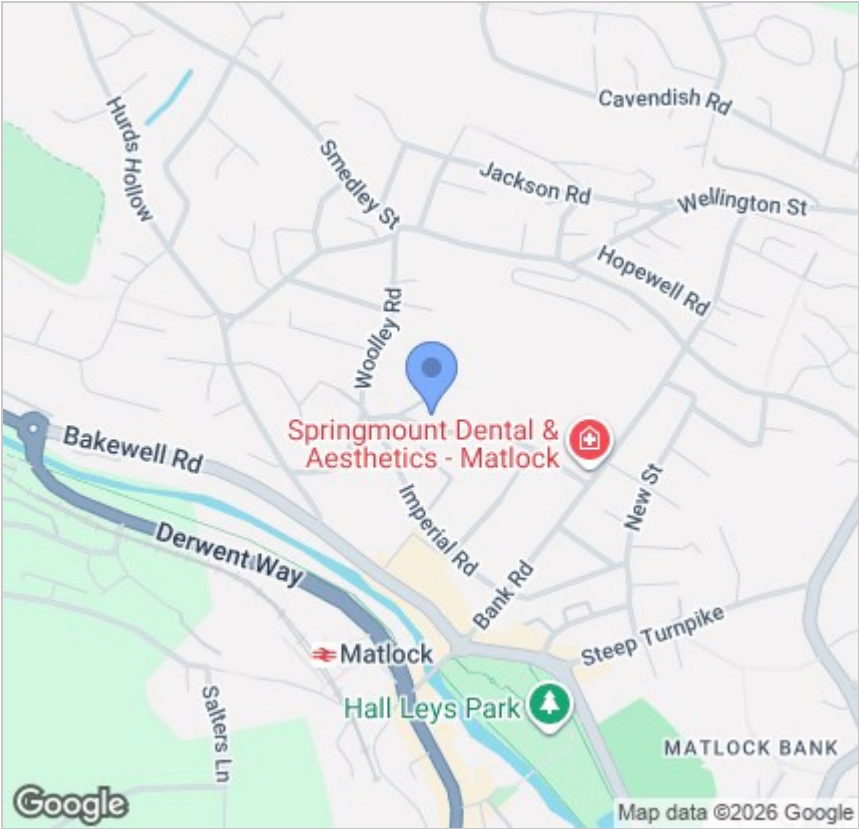


Viewing

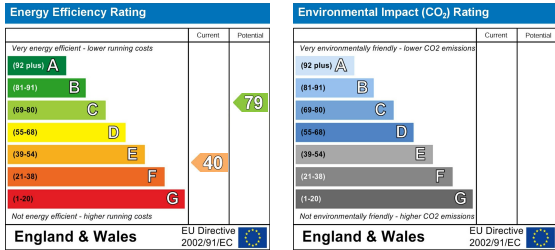
Please contact our Chesterfield Office on 01246 567540 if you wish to arrange a viewing appointment for this property or require further information.

These particulars, whilst believed to be accurate are set out as a general outline only for guidance and do not constitute any part of an offer or contract. Intending purchasers should not rely on them as statements of representation of fact, but must satisfy themselves by inspection or otherwise as to their accuracy. No person in this firms employment has the authority to make or give any representation or warranty in respect of the property.

Area Map



Energy Efficiency Graph



131 Chatsworth Road, Chesterfield, Derbyshire, S40 2AP
T: 01246 567540



E: info@dalesandpeaks.co.uk
www.dalesandpeaks.co.uk