



**Granville Granby Croft**  
, Bakewell, DE45 1ET

**£535,000**





## Granville Granby Croft

, Bakewell, DE45 1ET

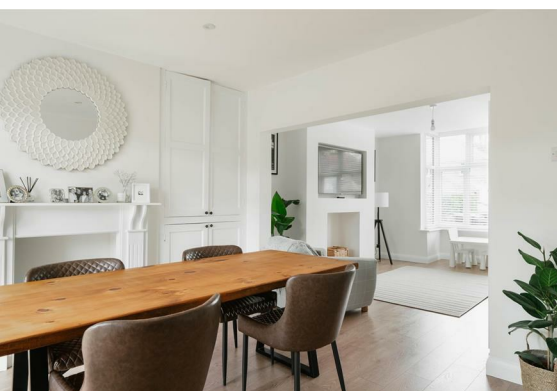
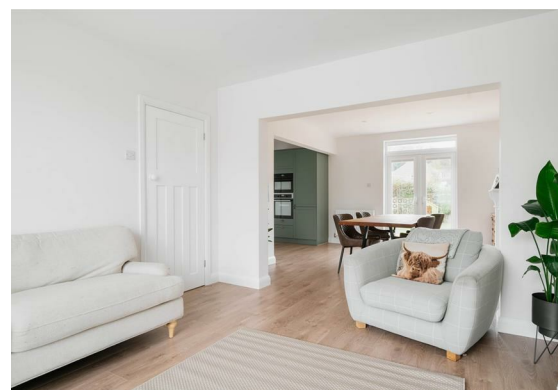
Situated in the picturesque town of Bakewell, within the stunning Peak District, this recently refurbished semi detached house on Granby Croft. Being within close proximity of the local amenities, the property benefits from 1302 sqft of modern living accommodation, a generous rear garden and patio space and ample off street parking.

The ground floor comprises; Entrance porch and hallway, front aspect living area with bay window, through to the open plan dining kitchen with integrated doors and doors onto the rear garden. A separate utility room, downstairs WC and third reception room, currently used as a playroom.

The first floor comprises; Three double bedrooms, a family bathroom and separate shower room.

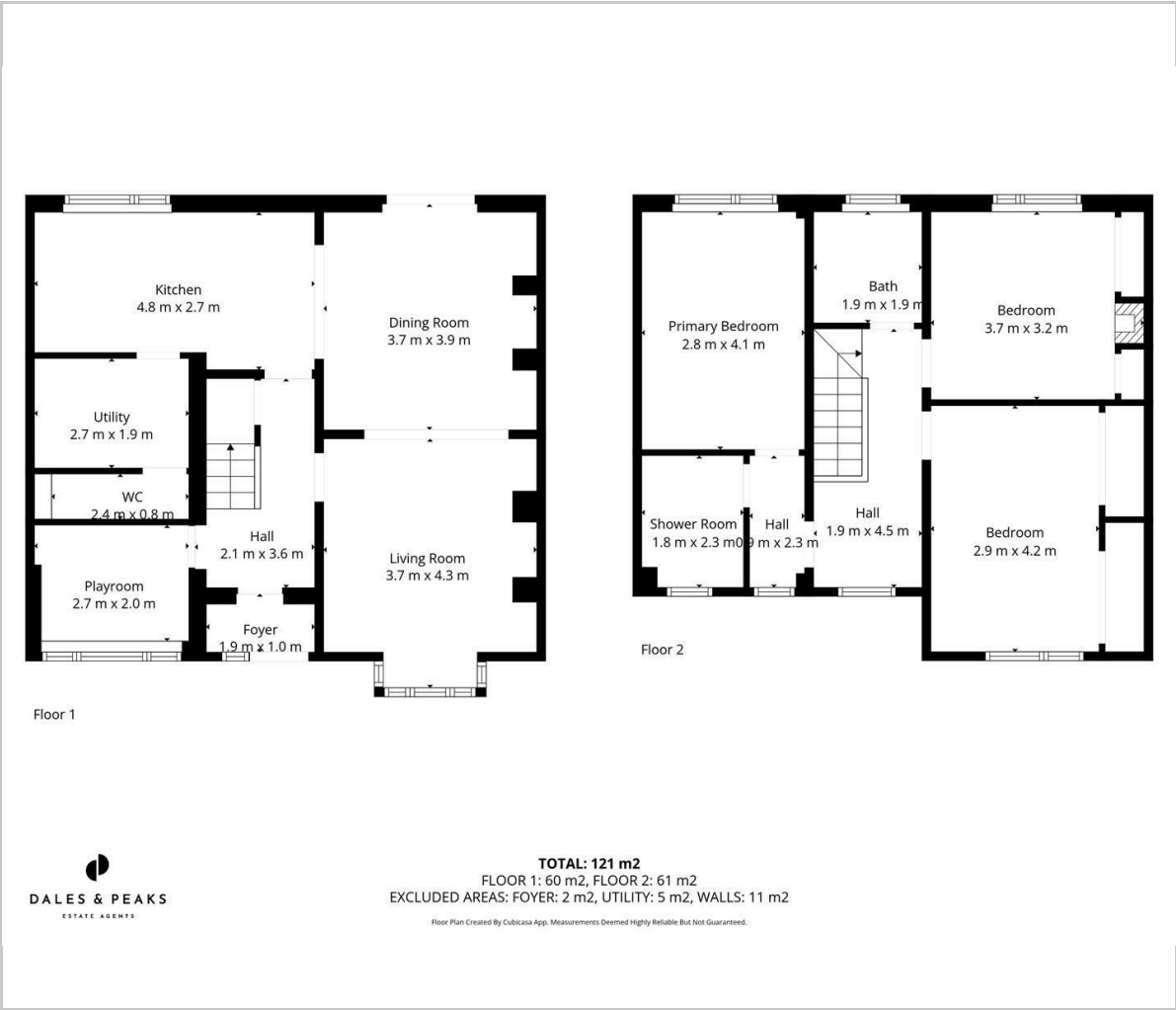
**Dales and Peaks ForwardMove**  
- Please read







Floor Plan

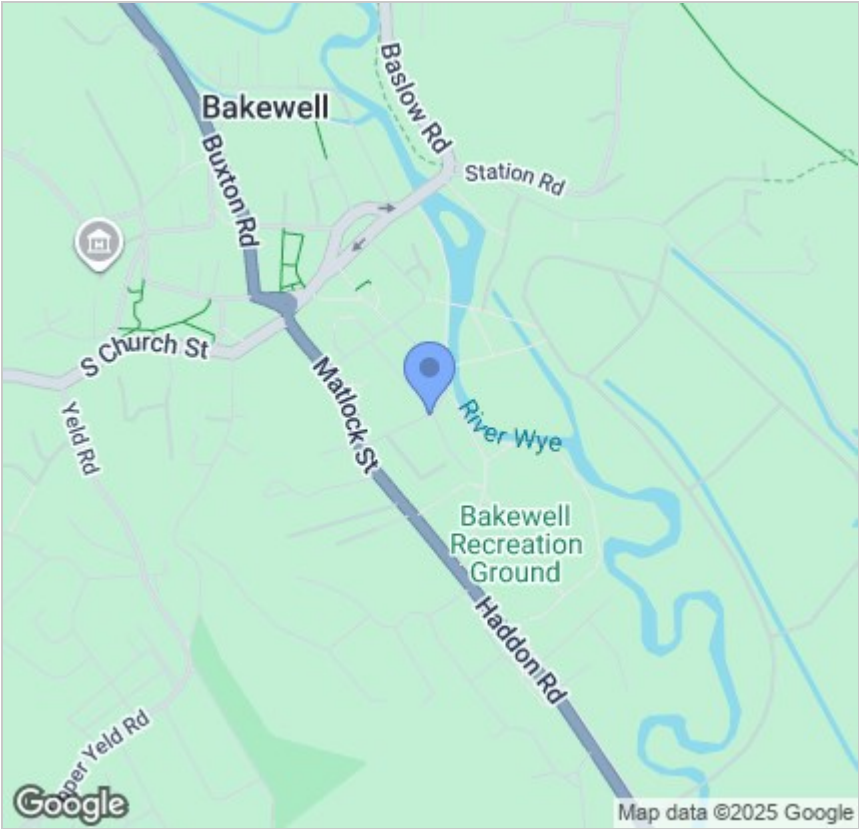


Viewing

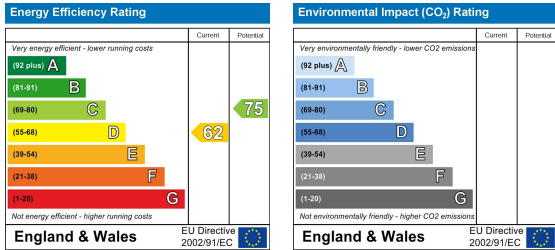
Please contact our Chesterfield Office on 01246 567540 if you wish to arrange a viewing appointment for this property or require further information.

These particulars, whilst believed to be accurate are set out as a general outline only for guidance and do not constitute any part of an offer or contract. Intending purchasers should not rely on them as statements of representation of fact, but must satisfy themselves by inspection or otherwise as to their accuracy. No person in this firms employment has the authority to make or give any representation or warranty in respect of the property.

Area Map



Energy Efficiency Graph



131 Chatsworth Road, Chesterfield, Derbyshire, S40 2AP  
T: 01246 567540



E: info@dalesandpeaks.co.uk  
www.dalesandpeaks.co.uk