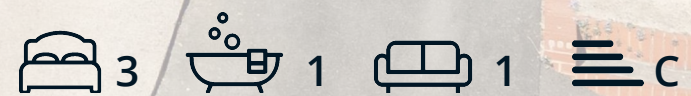




13 Davids Drive

Wingerworth, Chesterfield, S42 6TT

£1,100 PCM



13 Davids Drive

Wingerworth, Chesterfield, S42

An attractive three-bedroom bay-windowed semi-detached home, located in the highly desirable village of Wingerworth.

The property offers well-proportioned accommodation, including an entrance hallway, a convenient downstairs W/C, and a spacious open-plan kitchen and dining area that flows into a comfortable lounge featuring a stylish fireplace. Upstairs, there are two generous double bedrooms, a third single bedroom, and a contemporary family bathroom complete with a shower enclosure.

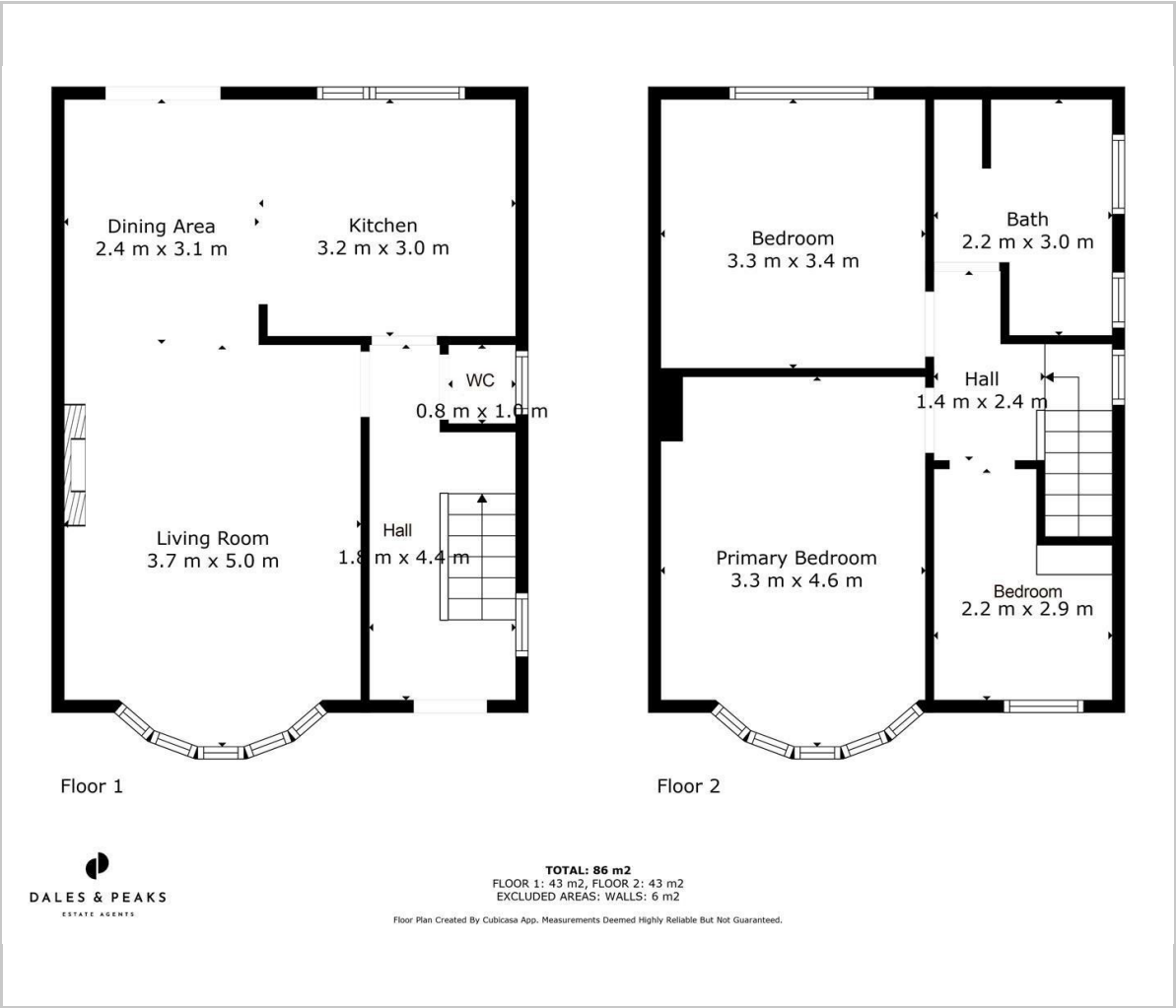
Externally, the home boasts a private rear garden and off-street driveway parking.

Rental information





Floor Plan



Viewing

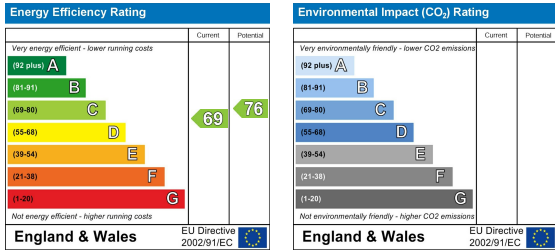
Please contact our Chesterfield Office on 01246 567540 if you wish to arrange a viewing appointment for this property or require further information.

These particulars, whilst believed to be accurate are set out as a general outline only for guidance and do not constitute any part of an offer or contract. Intending purchasers should not rely on them as statements of representation of fact, but must satisfy themselves by inspection or otherwise as to their accuracy. No person in this firms employment has the authority to make or give any representation or warranty in respect of the property.

Area Map



Energy Efficiency Graph



131 Chatsworth Road, Chesterfield, Derbyshire, S40 2AP
T: 01246 567540



E: info@dalesandpeaks.co.uk
www.dalesandpeaks.co.uk