



DALES & PEAKS

**13 Cromford Drive**  
Staveley, Chesterfield, S43 3TB  
Guide Price £300,000





## 13 Cromford Drive

Staveley, Chesterfield, S43 3TB

£300,000 - £325,000 (Guide price)

Situated on a quiet cul-de-sac, close to Ringwood Park and conveniently located near commuter links and local amenities, is this well-presented and deceptively spacious 4 bedroom detached family home.

Offering a spacious 1216 sqft of accommodation over 2 storeys, the property features a large bay-fronted lounge, a modern kitchen with side access, a separate dining room, 4 good sized bedrooms, the family bathroom and an adjoining double garage.

Externally, the property sits in a generous plot. To the front of the home is a block paved gated driveway and adjoining double garage, providing off road parking for multiple cars. To the rear is a landscaped garden with large patio area.

The ground floor comprises; bright and spacious entrance hallway, dual aspect family lounge with feature fireplace, ground floor WC, dining room with patio doors onto the garden and a modern kitchen.

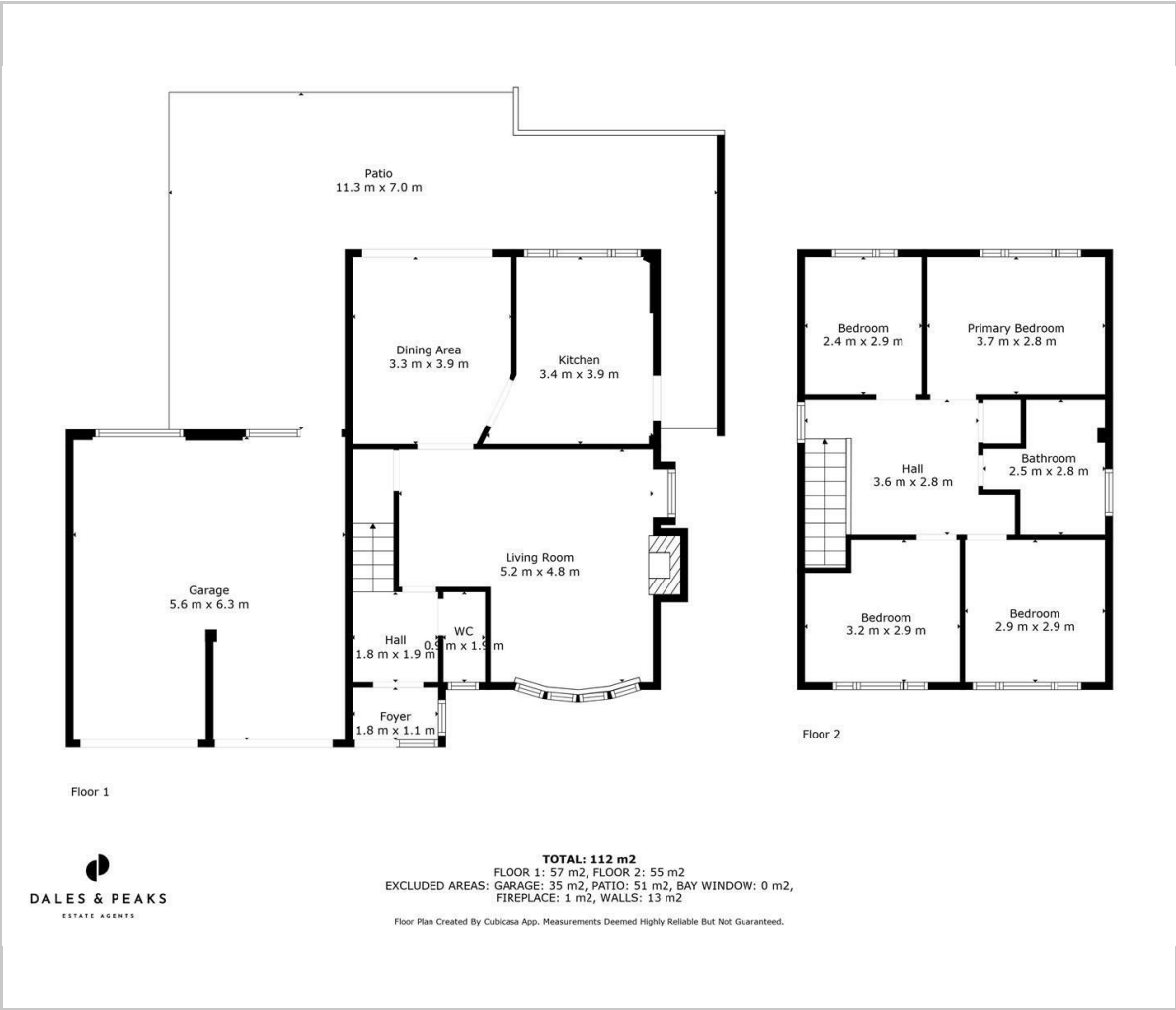
The first floor comprises; family bathroom with bath and overhead shower, 4 generously sized bedrooms.







Floor Plan

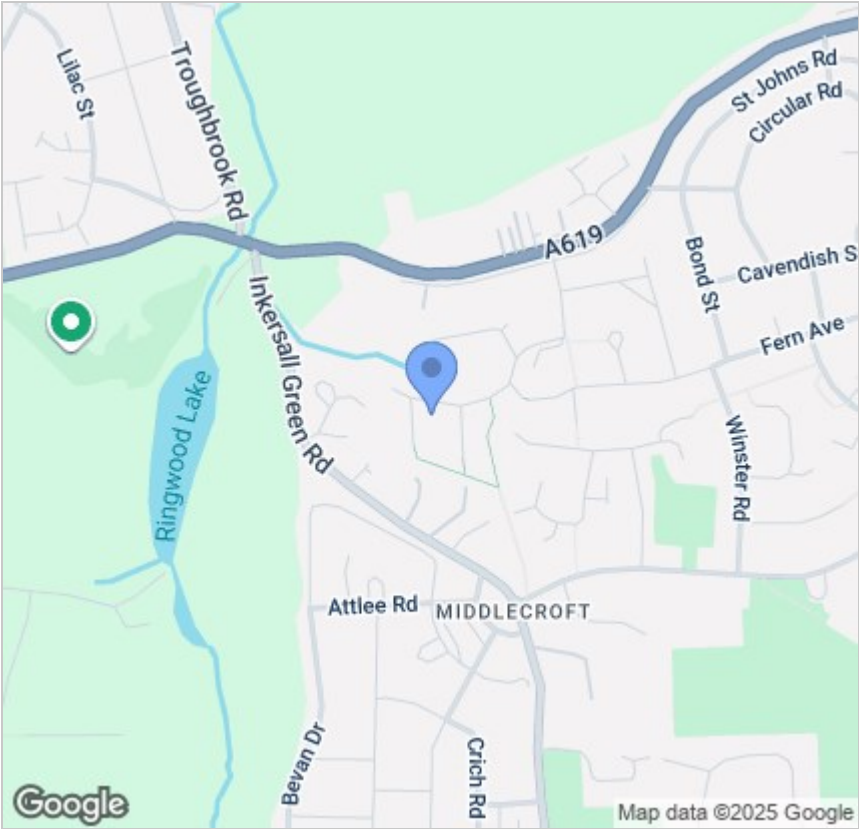


Viewing

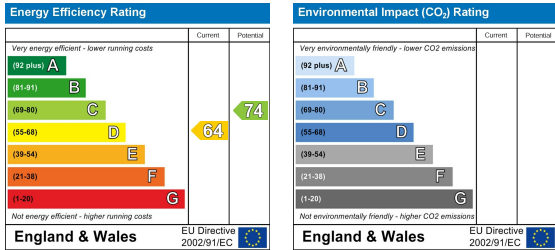
Please contact our Chesterfield Office on 01246 567540 if you wish to arrange a viewing appointment for this property or require further information.

These particulars, whilst believed to be accurate are set out as a general outline only for guidance and do not constitute any part of an offer or contract. Intending purchasers should not rely on them as statements of representation of fact, but must satisfy themselves by inspection or otherwise as to their accuracy. No person in this firms employment has the authority to make or give any representation or warranty in respect of the property.

Area Map



Energy Efficiency Graph



131 Chatsworth Road, Chesterfield, Derbyshire, S40 2AP  
T: 01246 567540



E: info@dalesandpeaks.co.uk  
www.dalesandpeaks.co.uk