



DALES & PEAKS



Development Land Birkin Lane

Wingerworth, Chesterfield, S42 6LL

£450,000



Development Land Birkin

Wingerworth, Chesterfield, S42

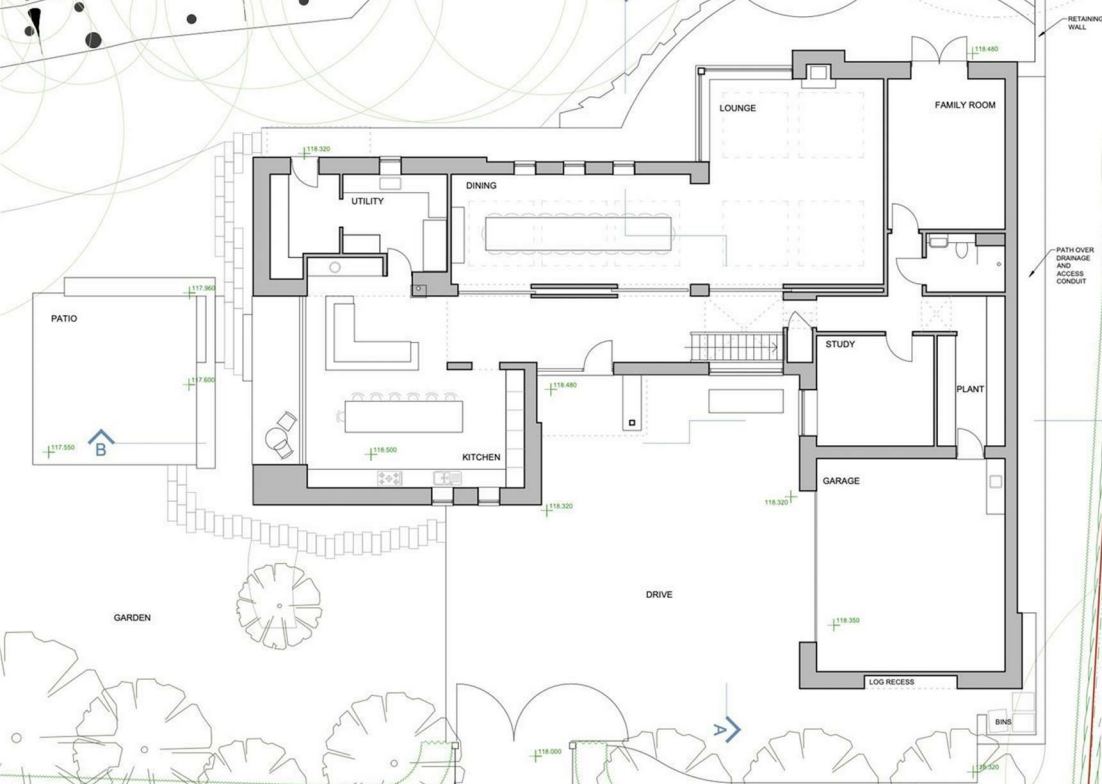
A truly unique opportunity to build your dream home in this stunning rural location. With planning consent granted for the erection of a large detached dwelling.

Local authority : North East Derbyshire Council
Planning ref : 22/01145/RM

Overall accommodation : 6083 sqft including garage.

Situated in this idyllic, rural location, on the outskirts of Wingerworth Village and a stones throw from Ashover and surrounding amenities, is this approximately 1 acre plot of land with full planning for the construction of an impressive 6083 sqft 5 bedroom, 4 bathroom detached eco home.





Floor Plan



Viewing

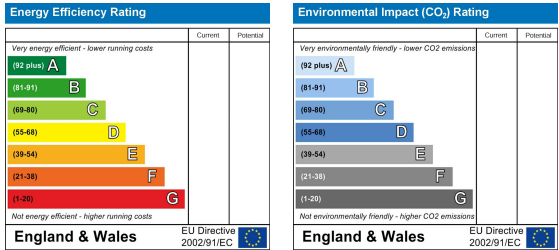
Please contact our Chesterfield Office on 01246 567540 if you wish to arrange a viewing appointment for this property or require further information.

These particulars, whilst believed to be accurate are set out as a general outline only for guidance and do not constitute any part of an offer or contract. Intending purchasers should not rely on them as statements of representation of fact, but must satisfy themselves by inspection or otherwise as to their accuracy. No person in this firms employment has the authority to make or give any representation or warranty in respect of the property.

Area Map



Energy Efficiency Graph



131 Chatsworth Road, Chesterfield, Derbyshire, S40 2AP
T: 01246 567540

E: info@dalesandpeaks.co.uk
www.dalesandpeaks.co.uk