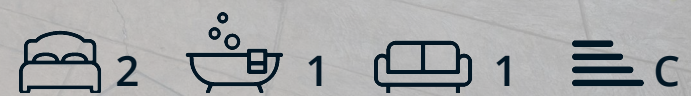




**1 Barholme Close, Upper Newbold**  
**, Chesterfield, S41 8AB**

**Offers In The Region Of £225,000**





## 1 Barholme Close, Upper , Chesterfield, S41 8AB

Situated in the desirable area of Upper Newbold, this two-bedroom semi-detached bungalow offers a perfect blend of comfort and convenience. Situated in a sought-after location, this bungalow benefits from excellent transport links, ensuring easy access to Chesterfield and beyond. Whether you are looking to downsize or seeking a peaceful retreat, this property presents an excellent opportunity to buy with no onward chain!

The modern fitted kitchen is a highlight of the home, designed to meet the needs of contemporary living, and is complemented by a practical utility porch that adds to the functionality of the space. The bungalow features two well-proportioned bedrooms, providing ample space with a bathroom having a walk in shower suite.

Outside, the property boasts a low maintenance garden and ample parking to the front, including a gated driveway and a detached garage.

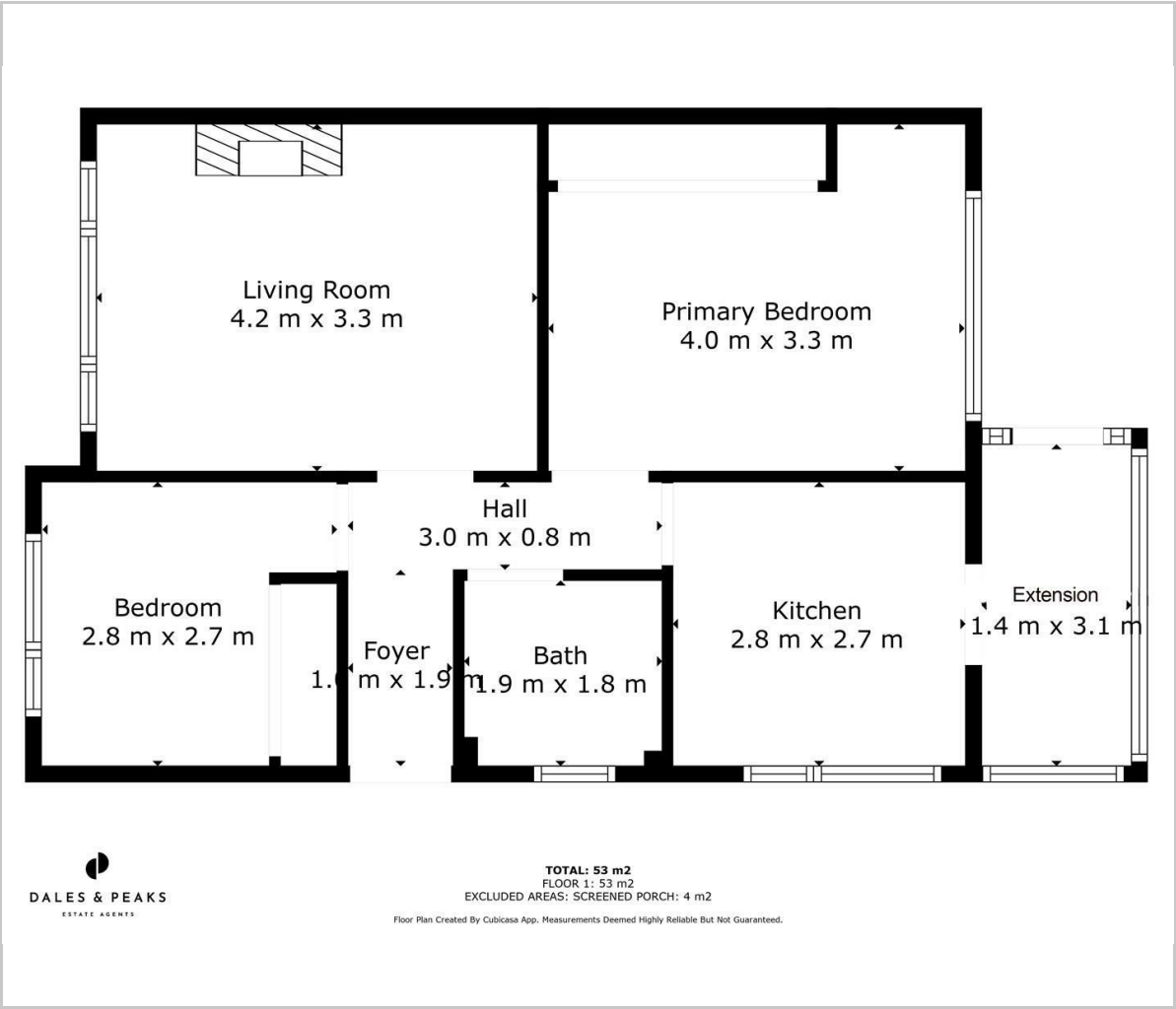
**\*PLEASE READ\* - Dales & Peaks ForwardMove**







Floor Plan

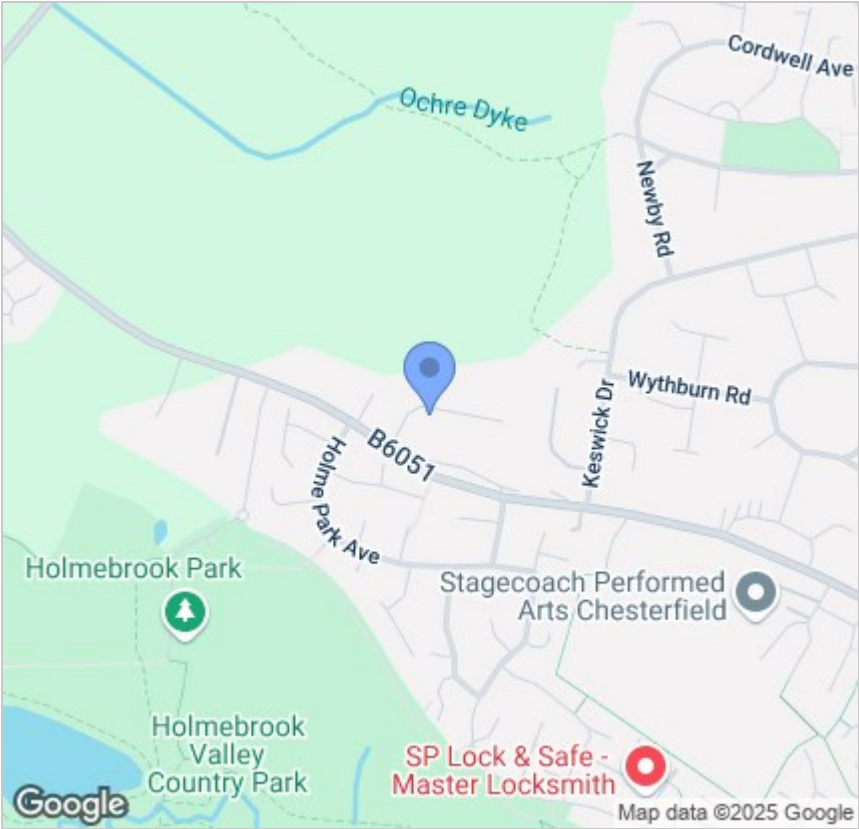


Viewing

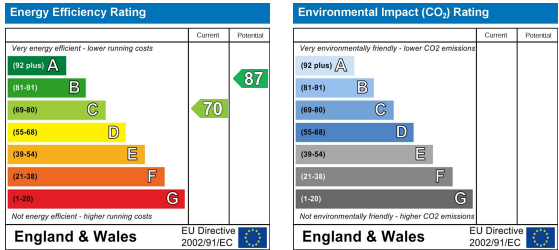
Please contact our Chesterfield Office on 01246 567540 if you wish to arrange a viewing appointment for this property or require further information.

These particulars, whilst believed to be accurate are set out as a general outline only for guidance and do not constitute any part of an offer or contract. Intending purchasers should not rely on them as statements of representation of fact, but must satisfy themselves by inspection or otherwise as to their accuracy. No person in this firms employment has the authority to make or give any representation or warranty in respect of the property.

Area Map



Energy Efficiency Graph



131 Chatsworth Road, Chesterfield, Derbyshire, S40 2AP  
T: 01246 567540



E: info@dalesandpeaks.co.uk  
www.dalesandpeaks.co.uk