

5A Avondale Road
Chesterfield, S40 4TF

£395,000



5A Avondale Road

, Chesterfield, S40 4TF

Situated right in the heart of Chesterfield Town Centre, this beautifully styled new-build semi-detached home has been designed to incorporate modern family life and social living into a beautifully styled and characterful modern home.

Offering 1797 sqft of accommodation over 3 storeys, the property features a stunning open-plan family space with bi-fold doors overlooking the private garden, a bay-fronted family lounge, 4 generously proportioned bedrooms including the master suite with dressing room and en-suite shower room, 3 bathrooms including 2 en-suites and off road parking for 2 cars.

The ground floor comprises; large entrance hallway, bay-fronted formal lounge, modern kitchen with integrated appliances and separate utility room, ground floor WC and a social open-plan family space with bi-fold doors to the private garden's patio area.

The first floor comprises; modern family bathroom with bath and overhead shower, 2 double bedrooms both with en-suite shower room and dressing rooms.

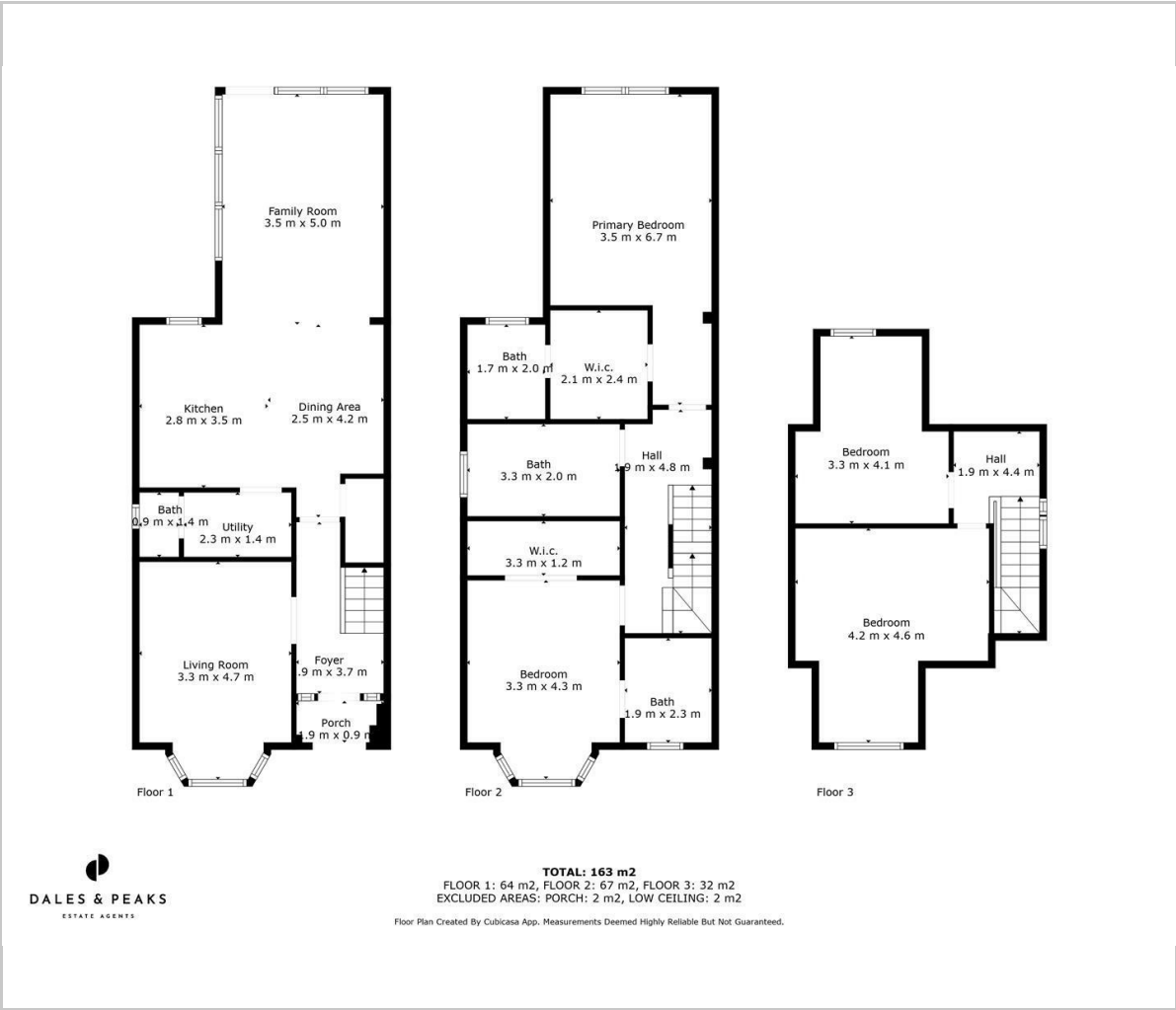
The second floor comprises; a further 2 large double bedroom.

**Dales & Peaks ForwardMove
please read**





Floor Plan

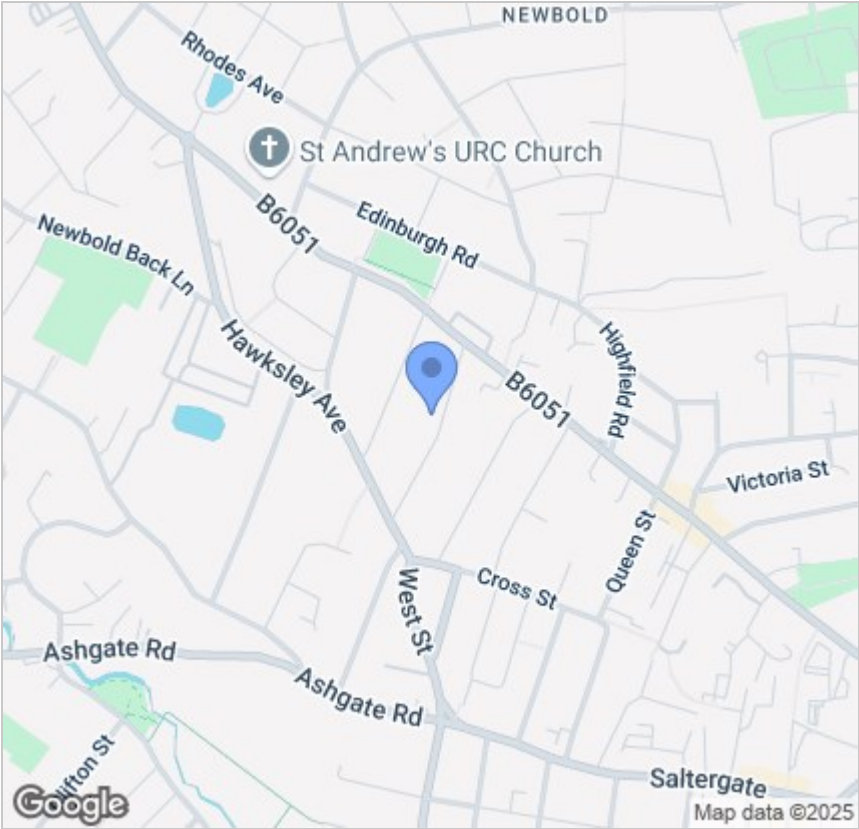


Viewing

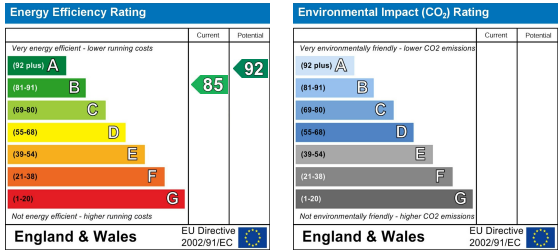
Please contact our Chesterfield Office on 01246 567540 if you wish to arrange a viewing appointment for this property or require further information.

These particulars, whilst believed to be accurate are set out as a general outline only for guidance and do not constitute any part of an offer or contract. Intending purchasers should not rely on them as statements of representation of fact, but must satisfy themselves by inspection or otherwise as to their accuracy. No person in this firms employment has the authority to make or give any representation or warranty in respect of the property.

Area Map



Energy Efficiency Graph



131 Chatsworth Road, Chesterfield, Derbyshire, S40 2AP
T: 01246 567540



E: info@dalesandpeaks.co.uk
www.dalesandpeaks.co.uk