



Coxleigh Cottage Matlock Road,
Ashover, Chesterfield, S45 0DY

£900 PCM



Coxleigh Cottage Matlock

Ashover, Chesterfield, S45 0DY

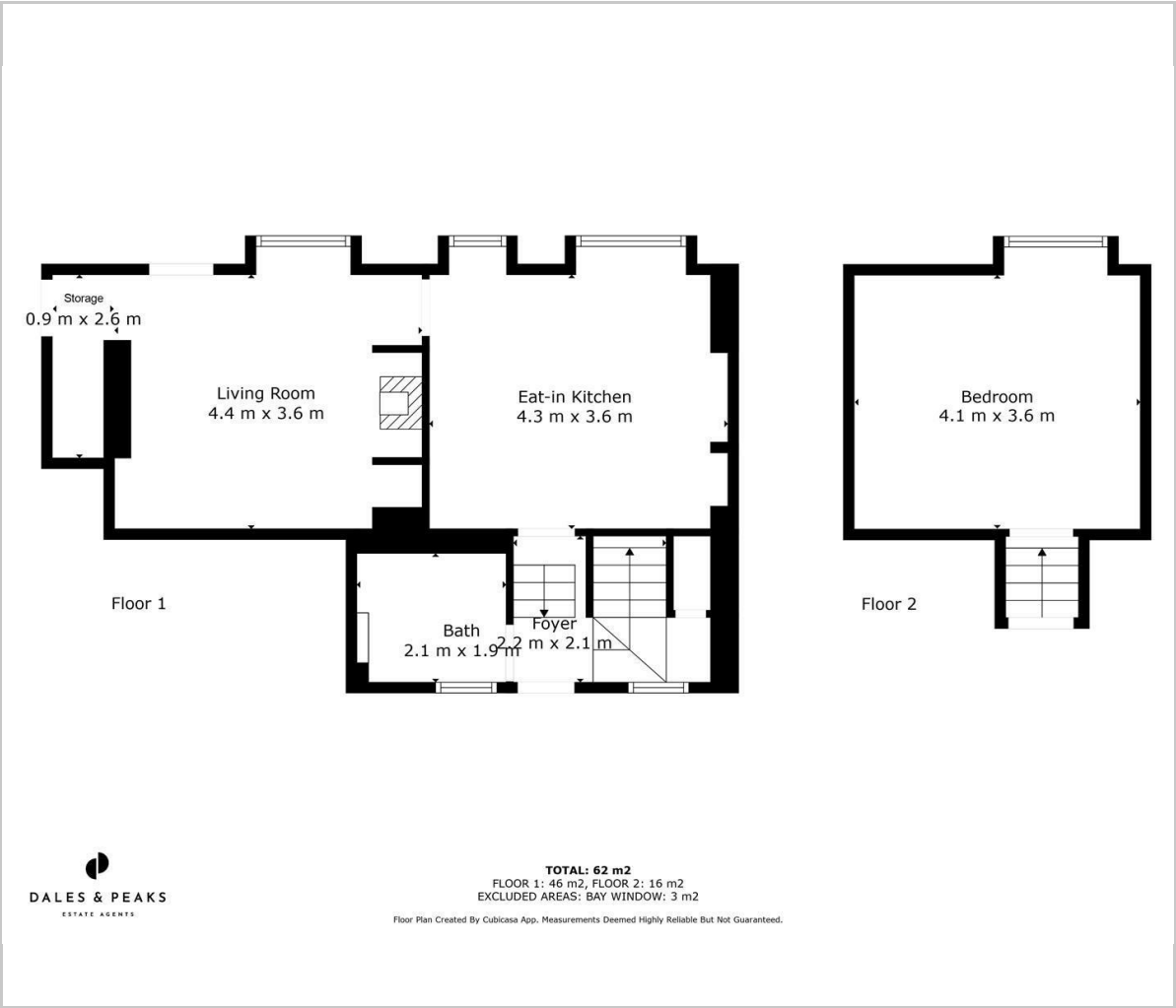
Coxleigh Cottage is a characterful and rustic one bedroom property full of original features including oak beams and an Inglenook fireplace. Upon entering the property, you are greeted with a cosy country kitchen which houses a range cooker and a selection of fitted units. This leads into a spacious living area with log burning stove. The bathroom is also situated on the ground floor with WC, vanity area and walk in shower. To the first floor there is one double bedroom. Outside there is parking on the drive for one car. Small enclosed garden to the rear of the property (shared).

Rental information





Floor Plan



Viewing

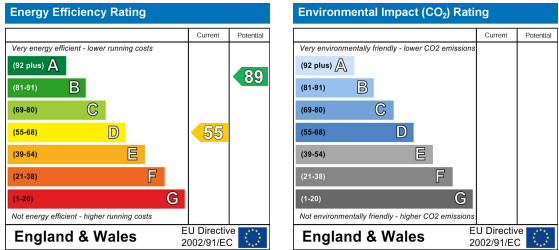
Please contact our Chesterfield Office on 01246 567540 if you wish to arrange a viewing appointment for this property or require further information.

These particulars, whilst believed to be accurate are set out as a general outline only for guidance and do not constitute any part of an offer or contract. Intending purchasers should not rely on them as statements of representation of fact, but must satisfy themselves by inspection or otherwise as to their accuracy. No person in this firms employment has the authority to make or give any representation or warranty in respect of the property.

Area Map



Energy Efficiency Graph



131 Chatsworth Road, Chesterfield, Derbyshire, S40 2AP
T: 01246 567540



E: info@dalesandpeaks.co.uk
www.dalesandpeaks.co.uk