



114 Ashgate Road
, Chesterfield, S40 4AQ

£1,300 PCM

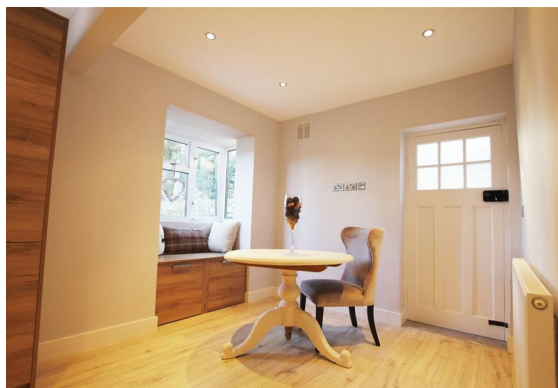
114 Ashgate Road

, Chesterfield, S40 4AQ

A deceptively spacious three-bedroom semi-detached home situated in the highly desirable area of Ashgate.

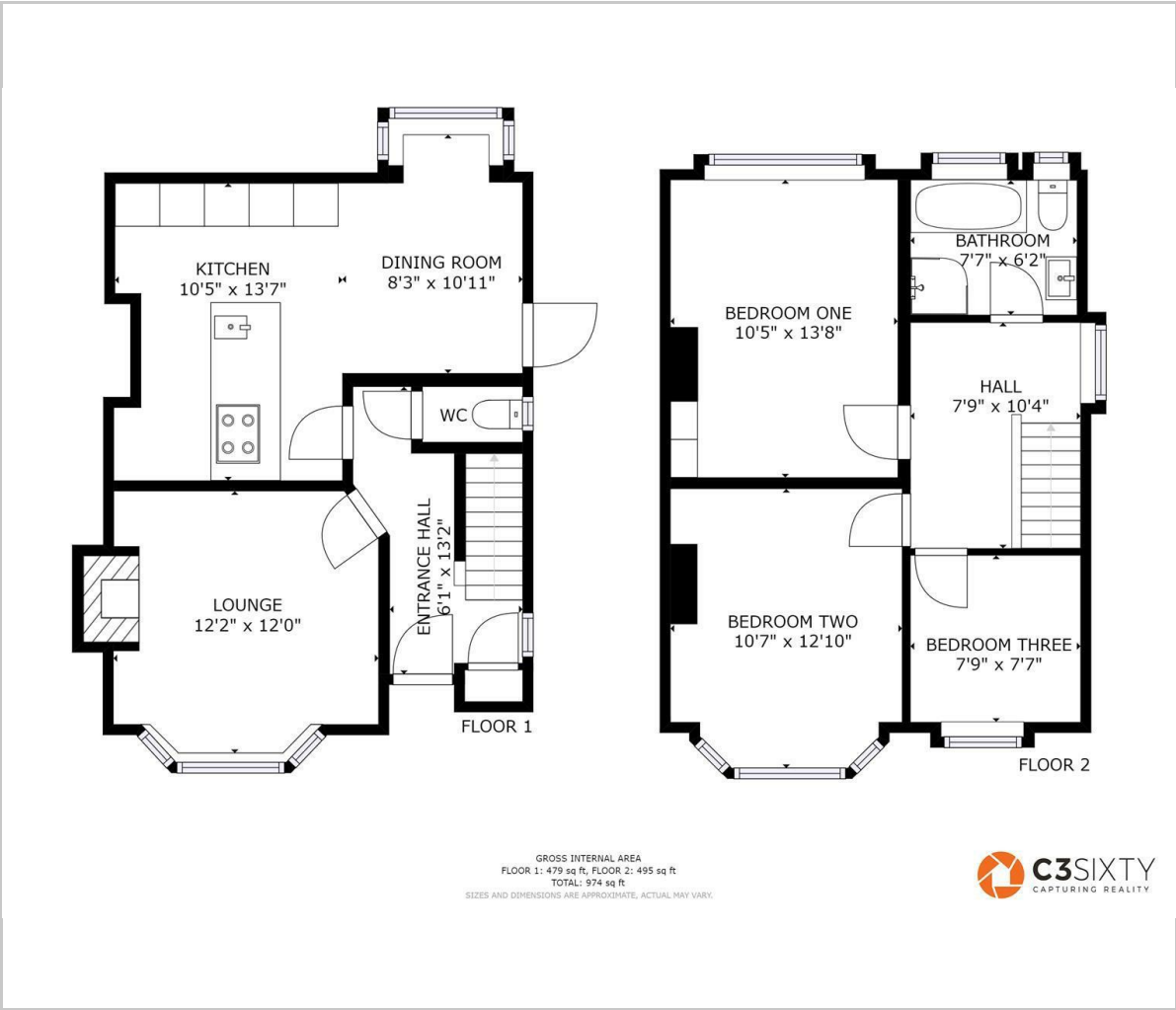
The ground floor features a bright entrance hall, a convenient downstairs WC, a bay-fronted lounge with a charming feature fireplace, and an open-plan kitchen diner boasting solid granite worktops, distinctive styling, and Bosch integrated appliances. Upstairs, the property offers three generously sized bedrooms, a spacious landing, and a contemporary family bathroom with both a separate shower and a bath.

Externally, the home benefits from a large, south-facing rear garden, a sizable garage, and a well-proportioned Indian stone driveway providing ample off-road parking.





Floor Plan

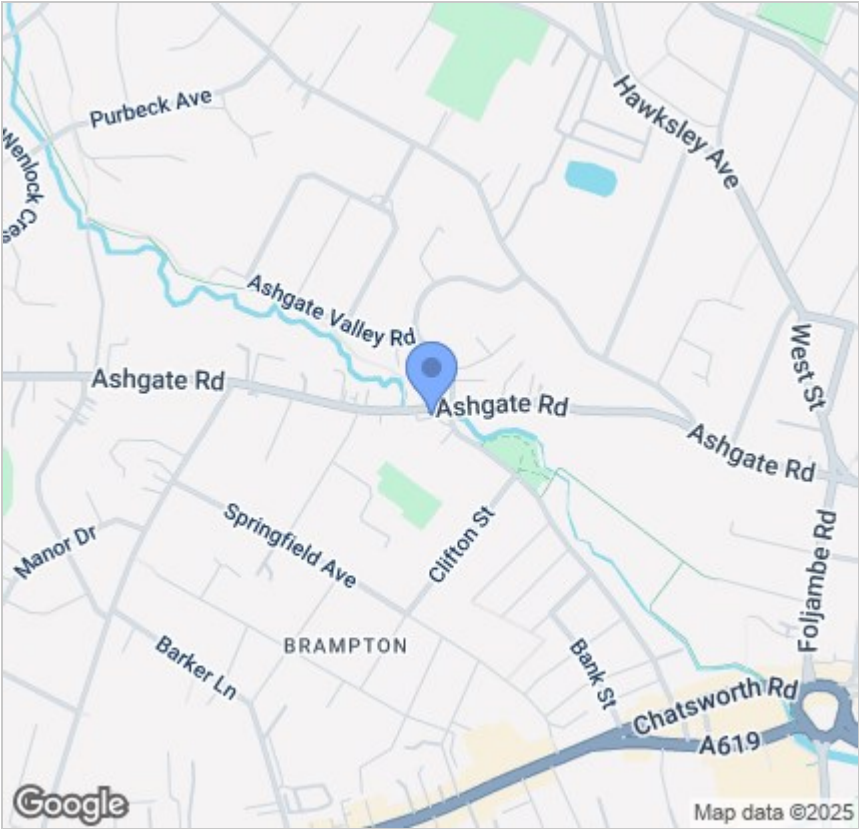


Viewing

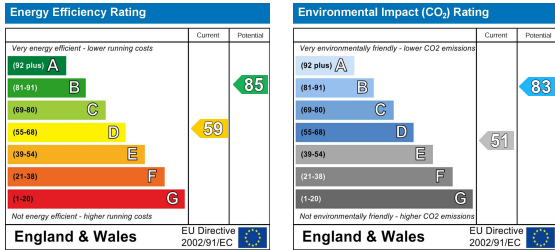
Please contact our Chesterfield Office on 01246 567540 if you wish to arrange a viewing appointment for this property or require further information.

These particulars, whilst believed to be accurate are set out as a general outline only for guidance and do not constitute any part of an offer or contract. Intending purchasers should not rely on them as statements of representation of fact, but must satisfy themselves by inspection or otherwise as to their accuracy. No person in this firms employment has the authority to make or give any representation or warranty in respect of the property.

Area Map



Energy Efficiency Graph



131 Chatsworth Road, Chesterfield, Derbyshire, S40 2AP
T: 01246 567540



E: info@dalesandpeaks.co.uk
www.dalesandpeaks.co.uk