



1 Darley House Estate

Hackney, Matlock, DE4 2QH

£850 PCM



1 Darley House Estate

Hackney, Matlock, DE4 2QH

A three-bedroom, semi-detached house located in the sought-after village of Darley Dale.

The property briefly comprises; entrance hallway, lounge with feature fireplace and dining kitchen. The first floor comprises two double bedrooms, bathroom, and additional bedroom.

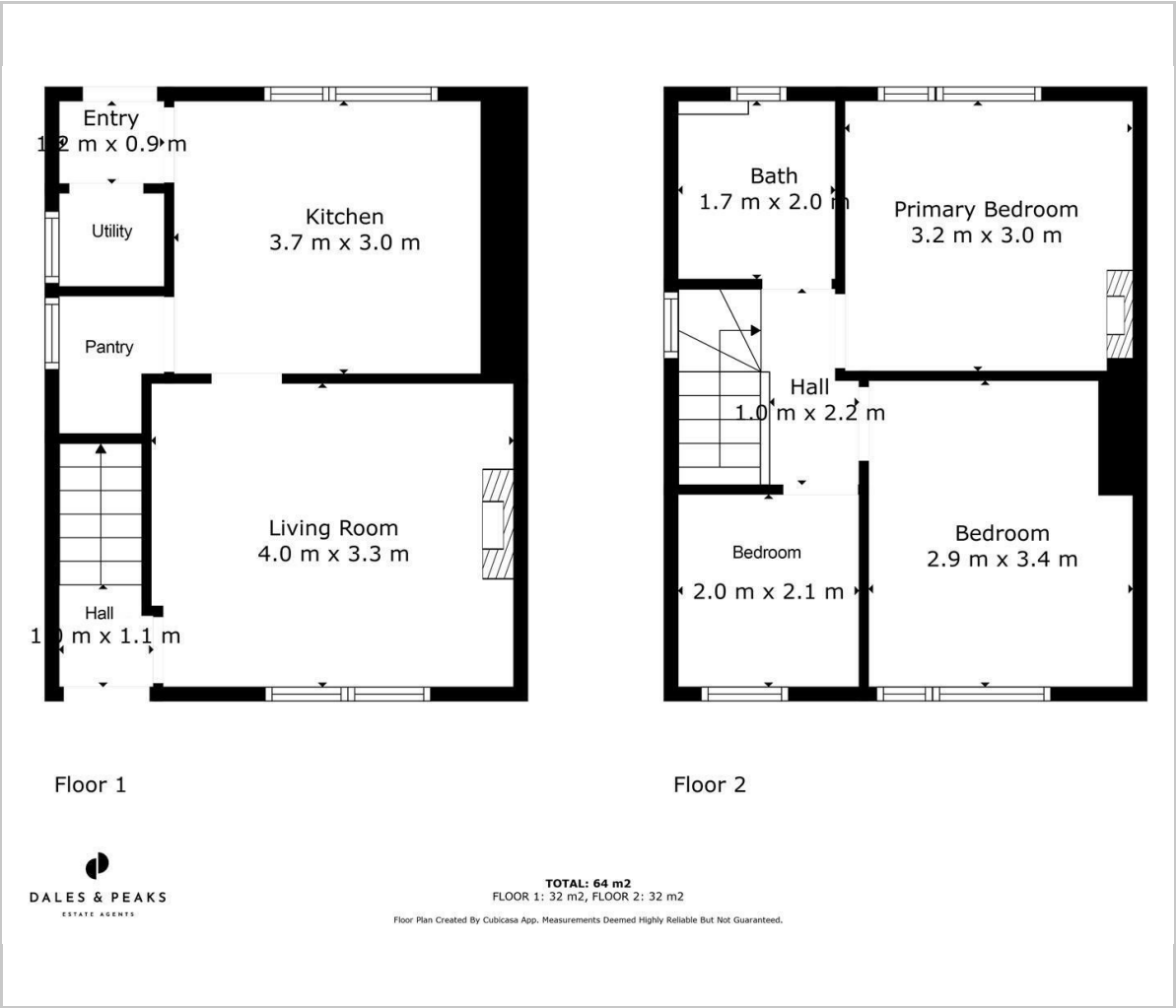
The property also benefits from off-road parking and a spacious rear garden.

Rental information





Floor Plan



Viewing

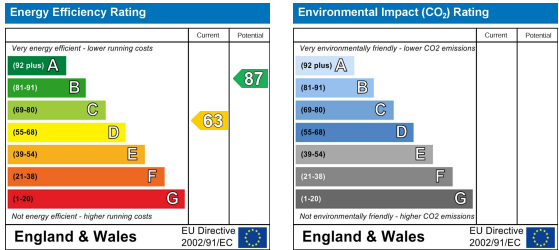
Please contact our Chesterfield Office on 01246 567540 if you wish to arrange a viewing appointment for this property or require further information.

These particulars, whilst believed to be accurate are set out as a general outline only for guidance and do not constitute any part of an offer or contract. Intending purchasers should not rely on them as statements of representation of fact, but must satisfy themselves by inspection or otherwise as to their accuracy. No person in this firms employment has the authority to make or give any representation or warranty in respect of the property.

Area Map



Energy Efficiency Graph



131 Chatsworth Road, Chesterfield, Derbyshire, S40 2AP
T: 01246 567540



E: info@dalesandpeaks.co.uk
www.dalesandpeaks.co.uk