

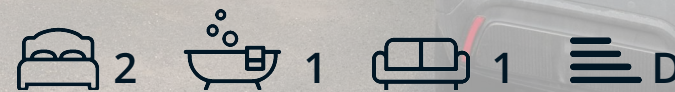


DALES & PEAKS



19 Darwin Avenue  
, Chesterfield, S40 4RU

Guide Price £230,000





## 19 Darwin Avenue

, Chesterfield, S40 4RU

£230,000 - £245,000 (Guide Price)

Located in this convenient location, within walking distance to Chesterfield Town Centre and local amenities, is this beautifully styled and fully renovated 2 bedroom semi detached home.

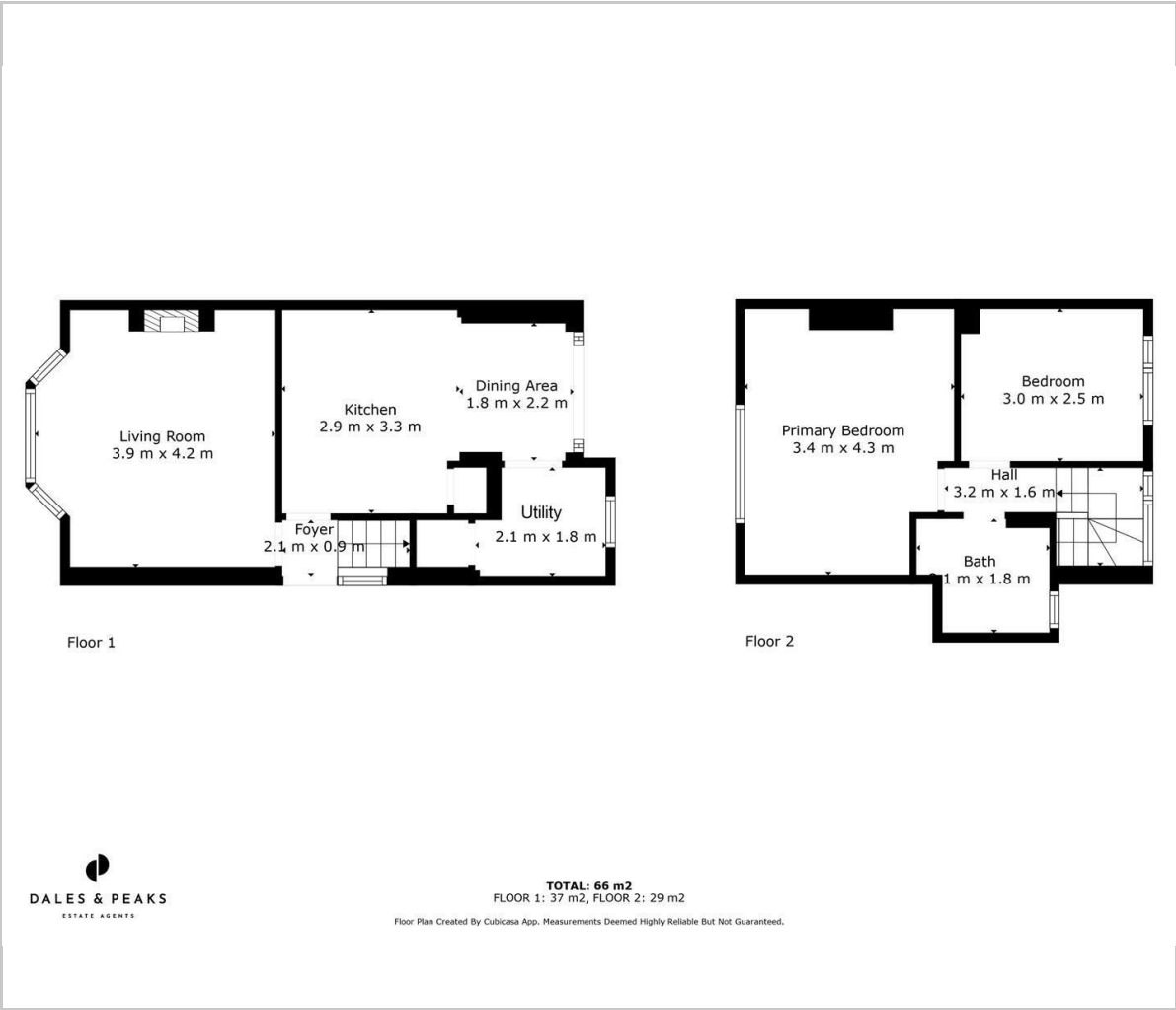
A stand out feature of this home is it's turn key finished having undergone extensive renovation being finished to a high standard throughout. The rear of the property has been extended and now provides a modern kitchen/dining space with patio doors to the rear, as well as a separate utility area with storage. The living room is complete with log burner and bay window. 2 double bedrooms and a bright, modern bathroom suite complete the first floor. Set on a quiet street with off road parking and a generous garden to the rear.

**Dales & Peaks ForwardMove -  
PLEASE READ**





Floor Plan

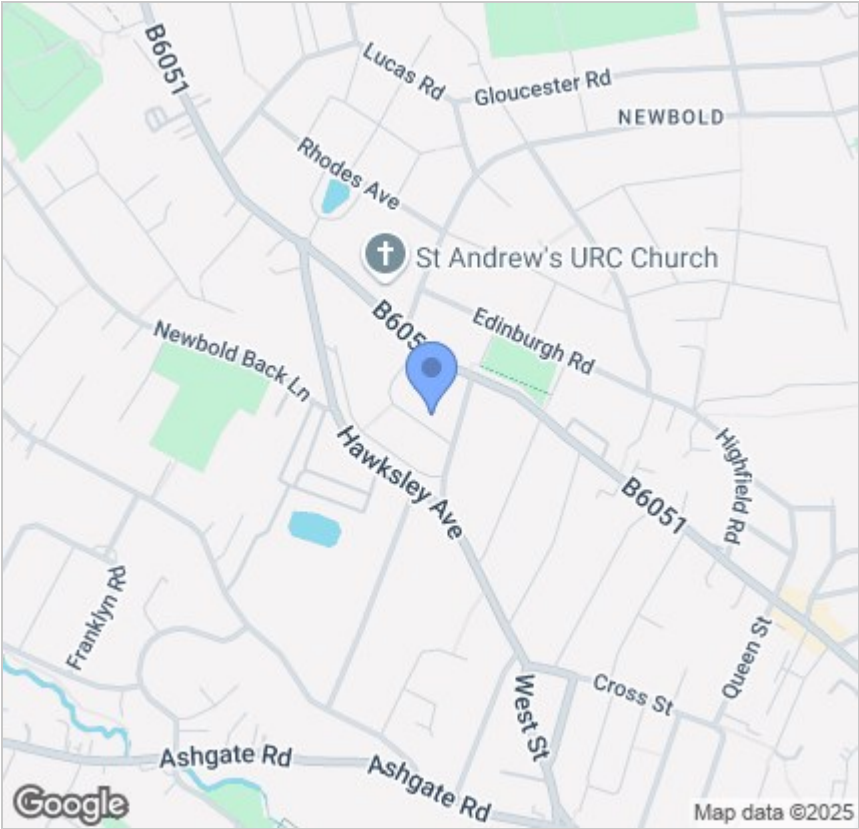


Viewing

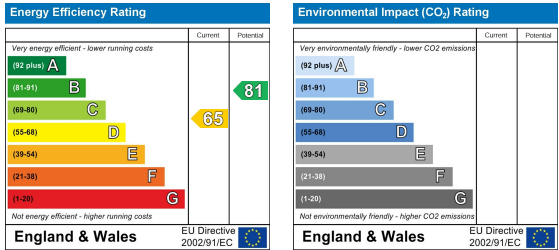
Please contact our Chesterfield Office on 01246 567540 if you wish to arrange a viewing appointment for this property or require further information.

These particulars, whilst believed to be accurate are set out as a general outline only for guidance and do not constitute any part of an offer or contract. Intending purchasers should not rely on them as statements of representation of fact, but must satisfy themselves by inspection or otherwise as to their accuracy. No person in this firms employment has the authority to make or give any representation or warranty in respect of the property.

Area Map



Energy Efficiency Graph



131 Chatsworth Road, Chesterfield, Derbyshire, S40 2AP  
T: 01246 567540



E: info@dalesandpeaks.co.uk  
www.dalesandpeaks.co.uk