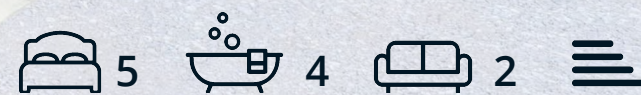




Meadow View Peartree Lane
Teversal, Sutton-In-Ashfield, NG17 3LE

£685,000



Meadow View Peartree

Teversal, Sutton-In-Ashfield, NG17

215

Welcome to Meadow View, a luxurious development of seven 5 bedroom detached homes, situated in this tranquil location, brought to you by renowned local home builder, Pulchra Homes.

Sunset House has been designed around the practicalities of modern day life, with flexible accommodation providing ample work-from-home space and tonnes of space for a growing family. Offering 2268 sqft (2681 sqft inc garage) of accommodation over 3 storeys, the property features a stylish open plan dining kitchen with Neff integrated appliances and aluminium sliding doors to the rear garden, separate utility space, a designated office, 5 good-sized double bedrooms and 4 chic Porcelanosa bathrooms, including 3 en-suites.

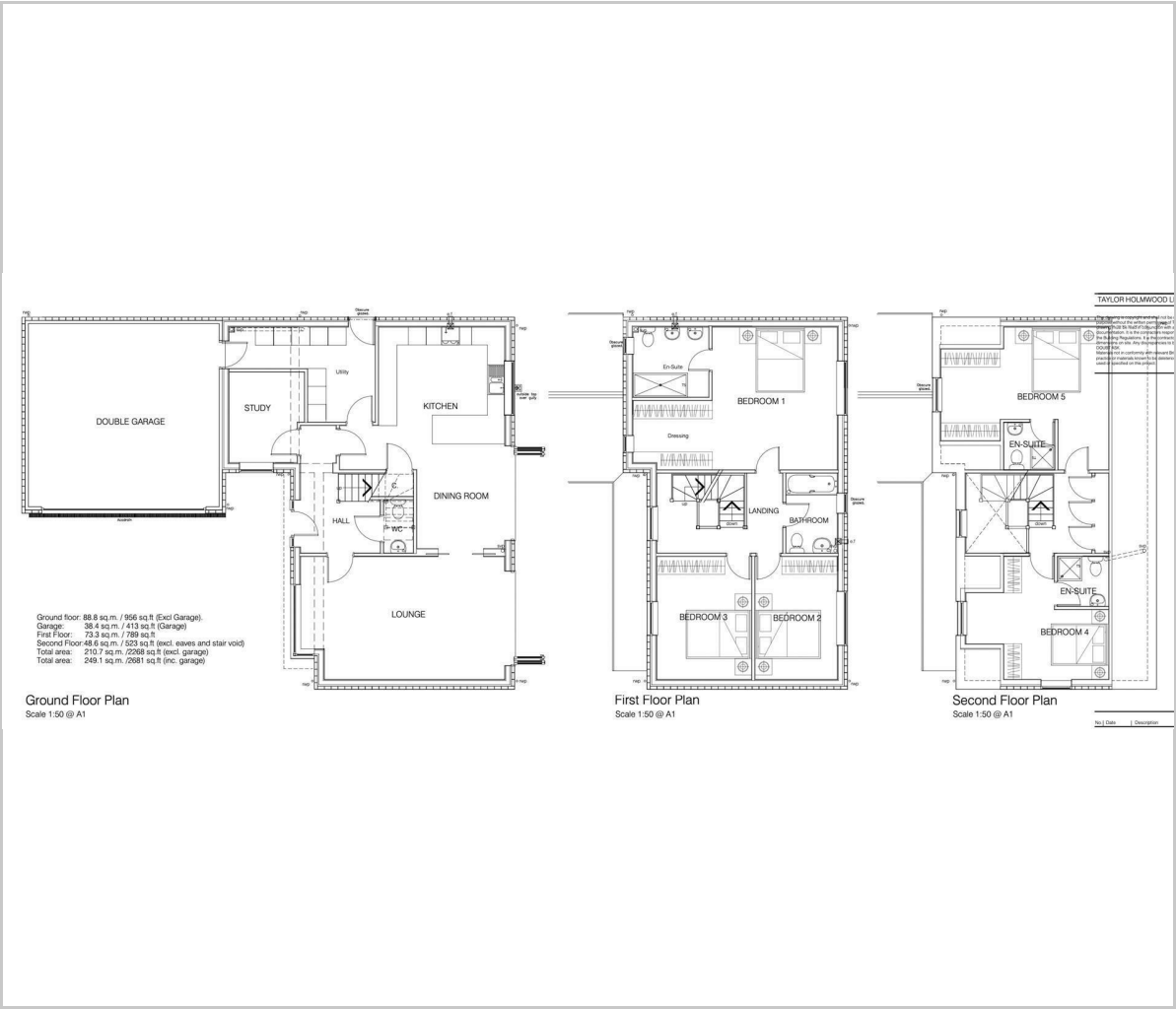
The ground floor comprises; central entrance hallway, double aspect family lounge with aluminium sliding leading to the rear garden, ground floor WC, designated office, open plan dining kitchen with quartz worktops, Neff integrated appliances and a separate utility room.

The first floor comprises; stylish Porcelanosa main bathroom, 3 generously sized double bedrooms including one with en-suite shower room.

The second floor comprises; a further 2 double en-suite bedrooms.



Floor Plan



Viewing

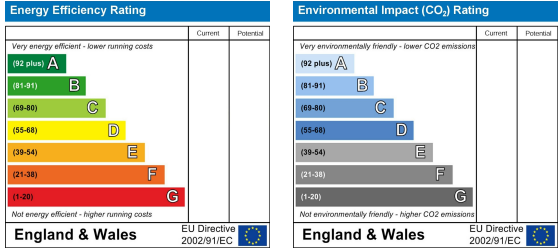
Please contact our Chesterfield Office on 01246 567540 if you wish to arrange a viewing appointment for this property or require further information.

These particulars, whilst believed to be accurate are set out as a general outline only for guidance and do not constitute any part of an offer or contract. Intending purchasers should not rely on them as statements of representation of fact, but must satisfy themselves by inspection or otherwise as to their accuracy. No person in this firms employment has the authority to make or give any representation or warranty in respect of the property.

Area Map



Energy Efficiency Graph



131 Chatsworth Road, Chesterfield, Derbyshire, S40 2AP
T: 01246 567540



E: info@dalesandpeaks.co.uk
www.dalesandpeaks.co.uk