



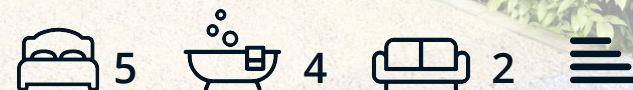
DALES & PEAKS



Meadow View Peartree Lane

Teversal, Sutton-In-Ashfield, NG17 3LE

£740,000



Meadow View Peartree

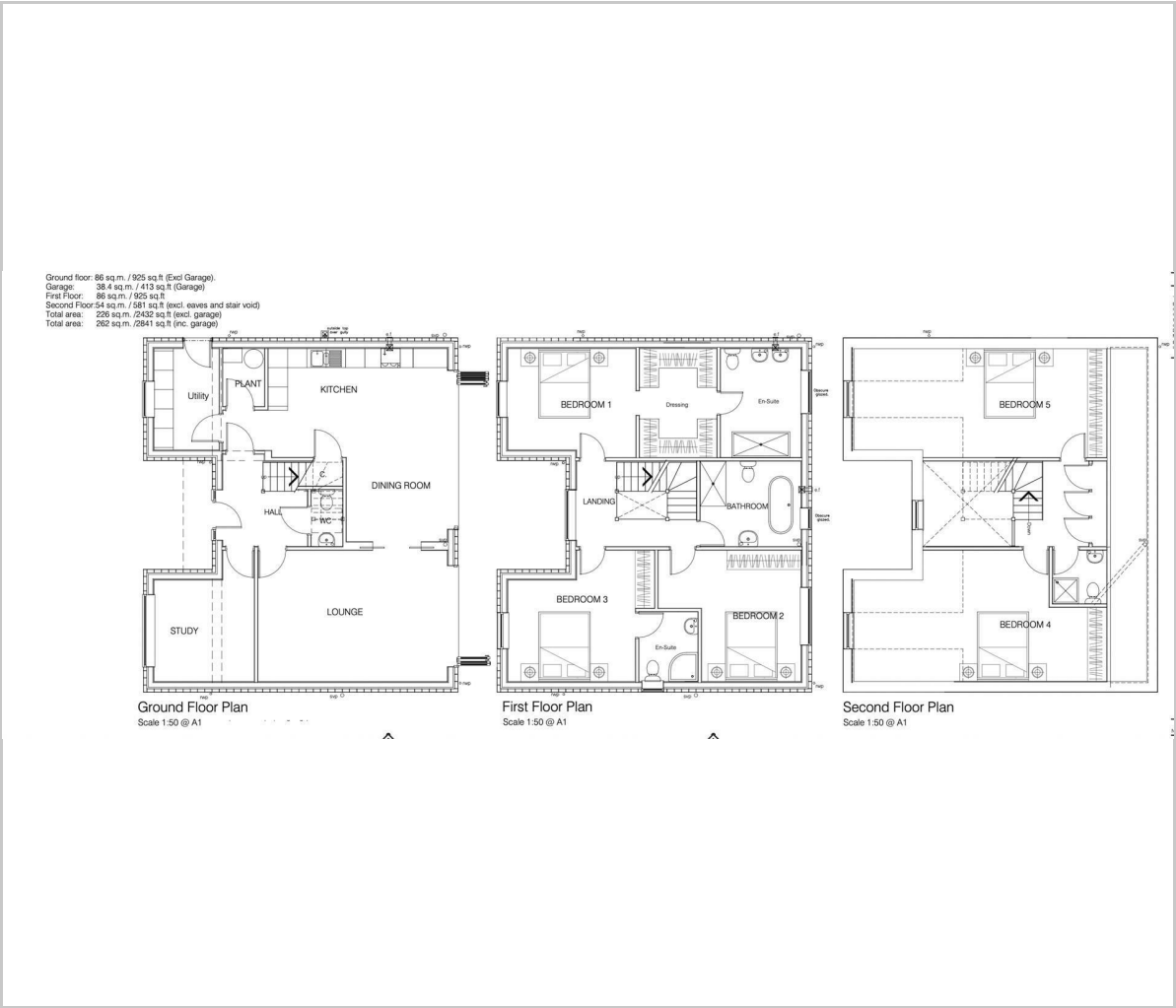
Teversal, Sutton-In-Ashfield, NG17 2LF

Welcome to Meadow View, a luxurious development of seven 5 bedroom detached homes, situated in this tranquil location, brought to you by renowned local home builder, Pulchra Homes.

Meadow View House has been designed around the practicalities of modern day life, with flexible accommodation providing ample space work-from-home space and tonnes of space for a growing family. Offering 2432 sqft (2841 sqft inc garage) of accommodation over 3 storeys, the property features a stylish open plan dining kitchen with Neff integrated appliances and aluminium sliding doors to the rear garden, separate utility space, a designated office, 5 good-sized double bedrooms and 4 chic Porcelanosa bathrooms, including 3 en-suites.



Floor Plan

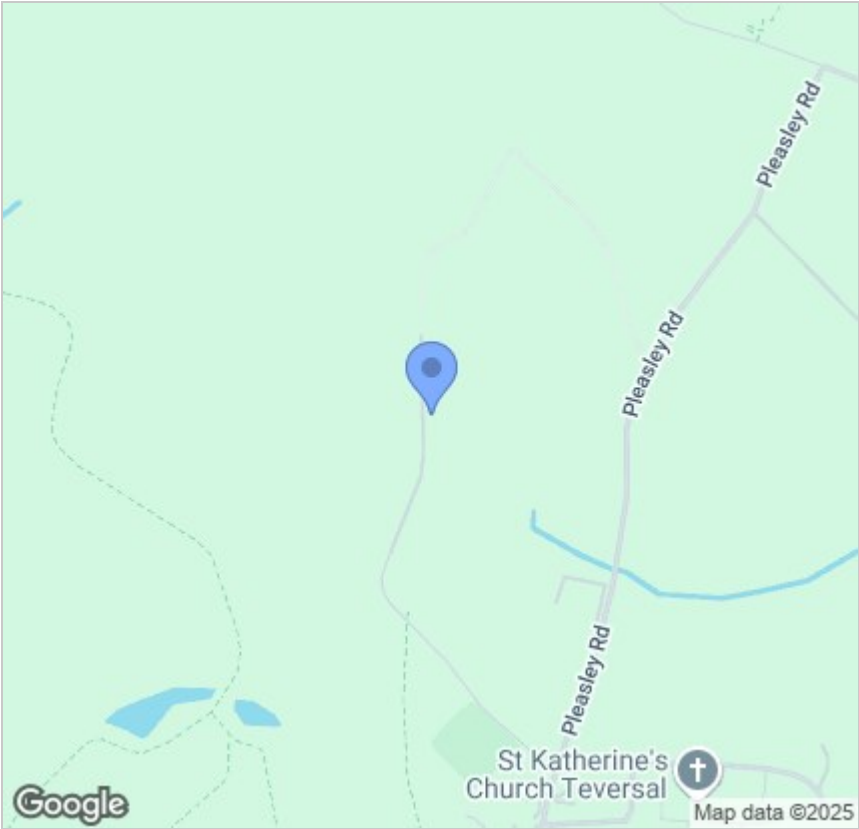


Viewing

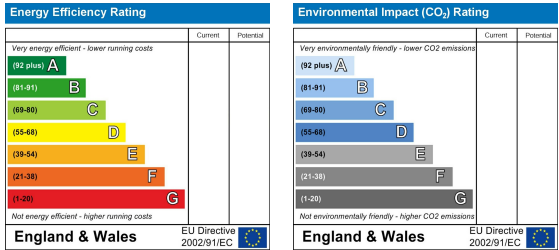
Please contact our Chesterfield Office on 01246 567540 if you wish to arrange a viewing appointment for this property or require further information.

These particulars, whilst believed to be accurate are set out as a general outline only for guidance and do not constitute any part of an offer or contract. Intending purchasers should not rely on them as statements of representation of fact, but must satisfy themselves by inspection or otherwise as to their accuracy. No person in this firms employment has the authority to make or give any representation or warranty in respect of the property.

Area Map



Energy Efficiency Graph



131 Chatsworth Road, Chesterfield, Derbyshire, S40 2AP
T: 01246 567540



E: info@dalesandpeaks.co.uk
www.dalesandpeaks.co.uk