



**The Hawthornes New Road**  
Holymoorside, Chesterfield, S42 7EW  
Guide Price £750,000



## The Hawthornes New Road

### Holymoorside, Chesterfield, S42

£750,000 - £775,000 (Guide price) Centrally located in the pretty and exceptionally sought after village of Holymoorside, and enjoying a position looking out towards open countryside, is this 5 bedroom, stone built detached family home.

Originally constructed in 2006 and built by renowned local home builder to bespoke specifications, The Hawthornes was built to the highest of standards and designed to be a timeless, one-off, executive family home, with ample accommodation suited both to a growing family and a home-owner requiring space to work-from-home.

A truly stand-out feature is the amount of natural light flowing through the home. It's south-east facing garden captures the majority of the daytime sunshine with the large windows and open views bringing that sunshine into the home. To the front of the property is a stunning stained glass feature window looking into the galleryed landing.

Set back from the road and occupying a large plot measuring approximately 0.2 of an acre. To the rear of the home is a landscaped garden with lawned area and large patio spanning the width of the property. To the front and side is an exceptionally large block-paved driveway providing parking for multiple vehicles, including ample space for a motorhome or caravan.

Offering a truly spacious 3143 sqft of accommodation over 3 storeys, the property features 2 ground floor reception rooms including a family lounge and formal dining room, a designated home office, shaker kitchen with granite worktops, integrated appliances and a separate utility room, 5 generously sized bedrooms, 3 bathrooms including 2 en-suites and a further flexible use loft room, ideal for a large bedroom or a further reception room. Please note - the second floor loft room is part of the property's original construction and thus is classed as useable living space.

**The ground floor comprises**

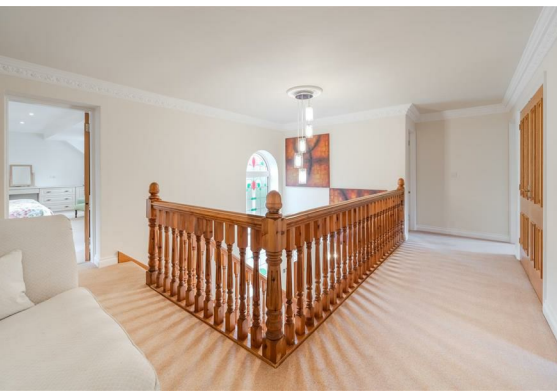
**The first floor comprises**

**The second floor comprises**

**Dales & Peaks ForwardMove  
please read**







Floor Plan



Viewing

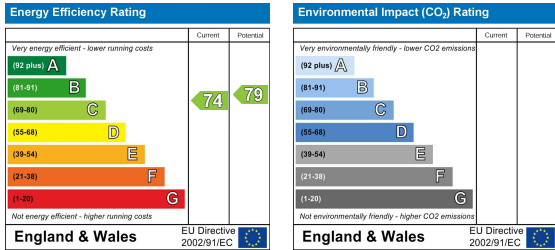
Please contact our Chesterfield Office on 01246 567540 if you wish to arrange a viewing appointment for this property or require further information.

These particulars, whilst believed to be accurate are set out as a general outline only for guidance and do not constitute any part of an offer or contract. Intending purchasers should not rely on them as statements of representation of fact, but must satisfy themselves by inspection or otherwise as to their accuracy. No person in this firms employment has the authority to make or give any representation or warranty in respect of the property.

Area Map



Energy Efficiency Graph



131 Chatsworth Road, Chesterfield, Derbyshire, S40 2AP  
T: 01246 567540



E: info@dalesandpeaks.co.uk  
www.dalesandpeaks.co.uk