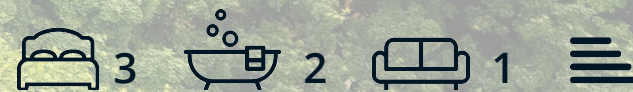




Ribber Castle Estate

Ribber, Matlock, DE4 5JU

£2,050 PCM



Riber Castle Estate

Riber, Matlock, DE4 5JU

For over 160 years Riber Castle has dominated the landscape above Matlock, today 26 lucky residents will be able to call it their home. Become part of this incredible building's future history.

Apartment 7

This duplex apartment, situated on the first and second floor of Riber Castle, offers a unique blend of historic charm and modern sophistication. Large entrance hall featuring galleryed doors.

The principal bedroom offers an ensuite bathroom and large windows, perfect for letting in lots of natural light and taking in vistas of the Derbyshire hills. The two additional bedrooms share a bathroom, providing ample space and comfort for family and guests.

The second floor invites you into a spacious, open-plan dining and living area. The heart of the home deserves special attention. This modern kitchen is fully fitted with appliances from leading brands and is perfectly positioned for hosting guests.

The History Of Riber Castle

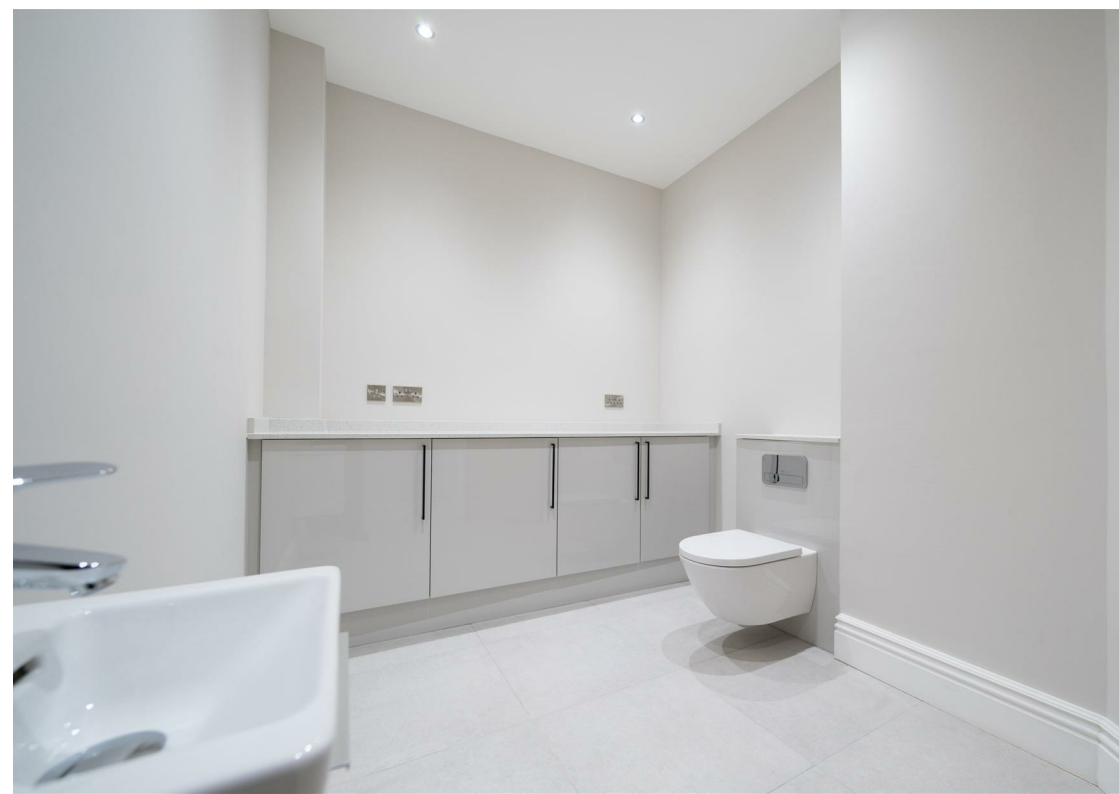
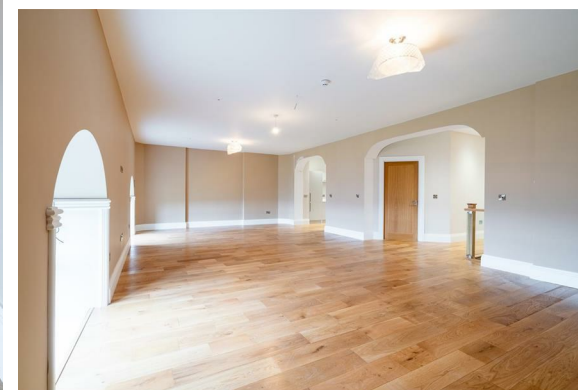
About This Property

The Riber Castle Apartments

Local Information

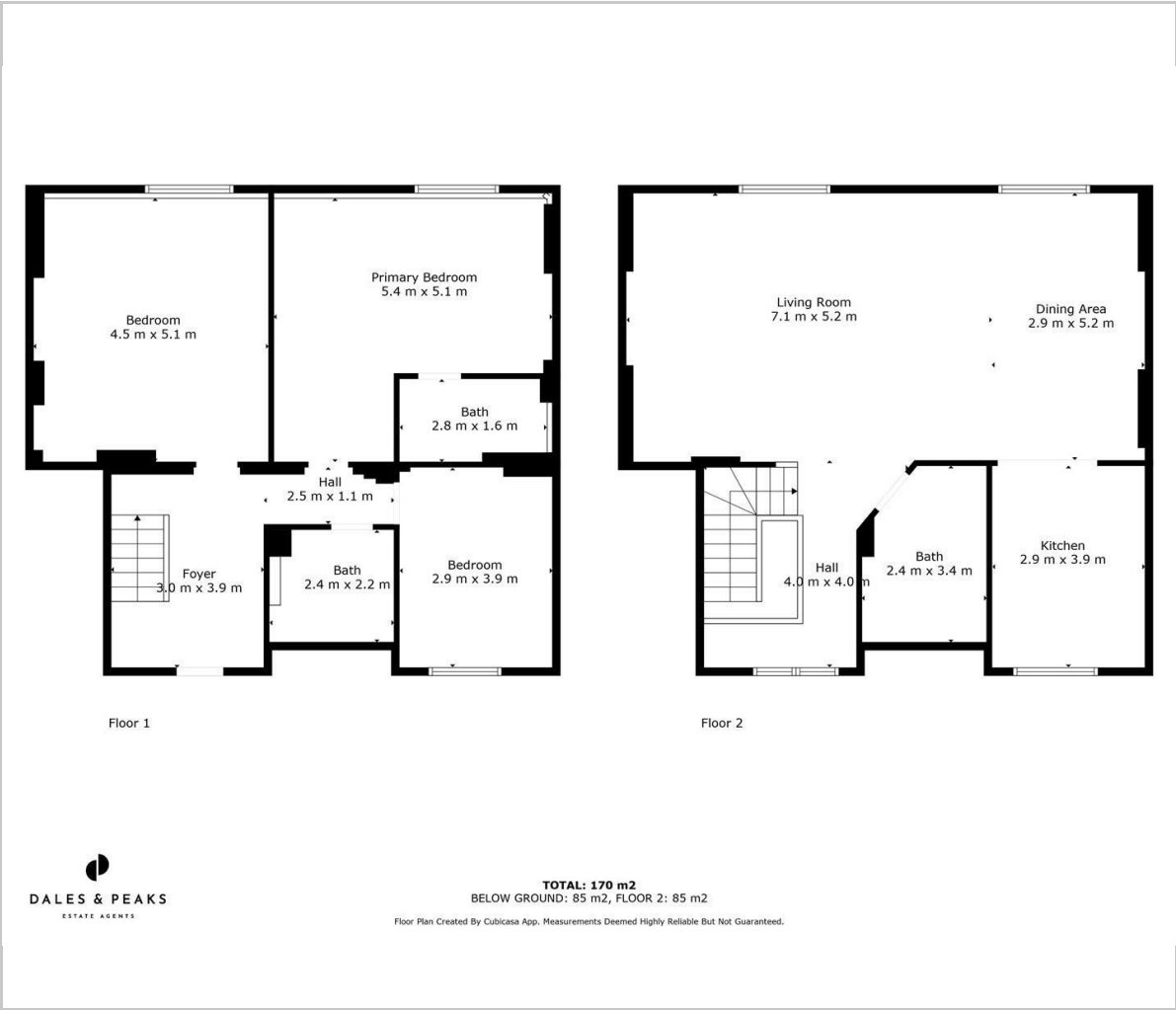
Additional Information

Rental info





Floor Plan

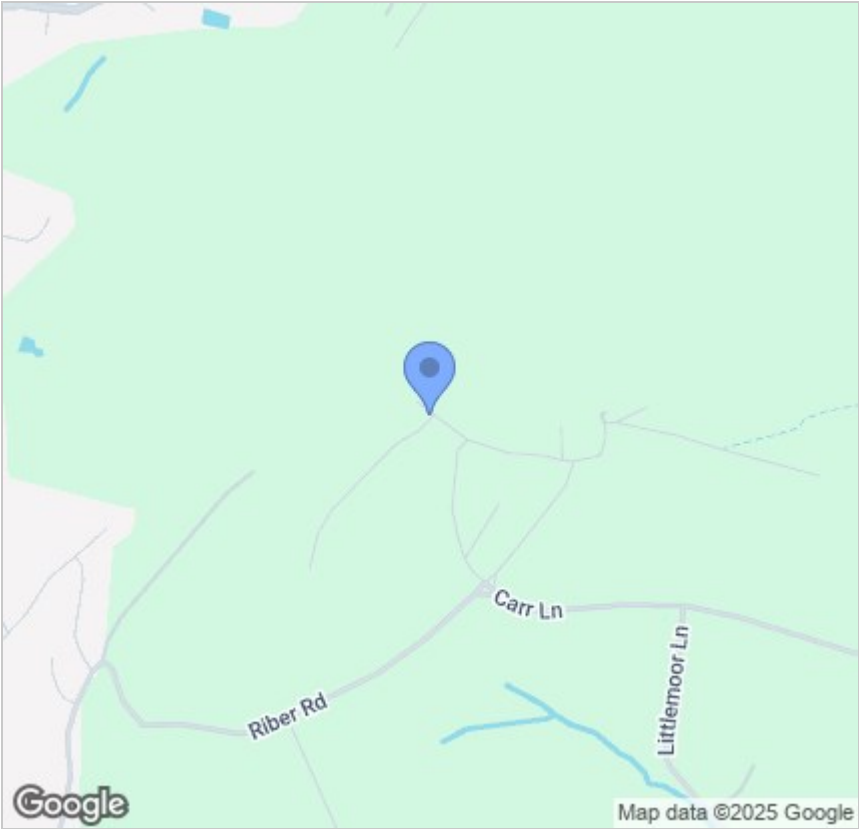


Viewing

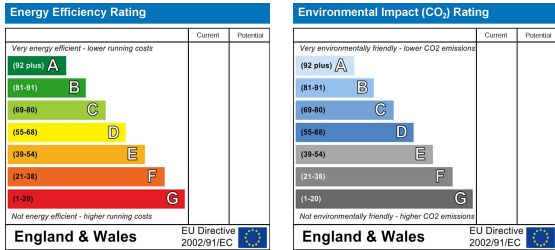
Please contact our Chesterfield Office on 01246 567540 if you wish to arrange a viewing appointment for this property or require further information.

These particulars, whilst believed to be accurate are set out as a general outline only for guidance and do not constitute any part of an offer or contract. Intending purchasers should not rely on them as statements of representation of fact, but must satisfy themselves by inspection or otherwise as to their accuracy. No person in this firms employment has the authority to make or give any representation or warranty in respect of the property.

Area Map



Energy Efficiency Graph



131 Chatsworth Road, Chesterfield, Derbyshire, S40 2AP
T: 01246 567540



E: info@dalesandpeaks.co.uk
www.dalesandpeaks.co.uk