



5 Elkstone Road
, Chesterfield, S40 4UT

£900 PCM



5 Elkstone Road

, Chesterfield, S40 4UT

A well presented, three-bedroom, semi-detached property situated in a popular area of Chesterfield.

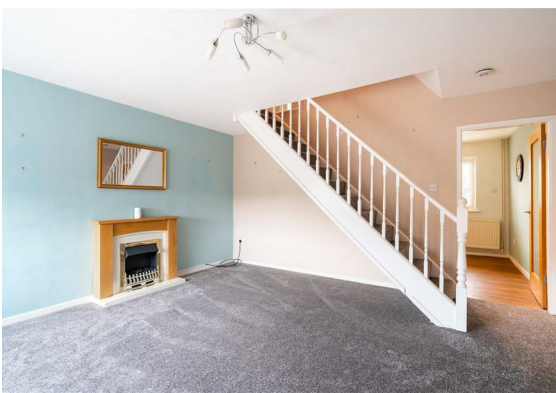
The ground floor briefly comprises; entrance porch leading to lounge with feature fireplace and spacious kitchen diner. The first floor comprises; two double bedrooms, a further single bedroom and bathroom.

Located in a sought after residential area, within walking distance of local amenities and shops, and a short walk to Holmebrook Valley Park and Linacre Reservoirs.

For fee information please copy and paste the link below for our tenant brochure

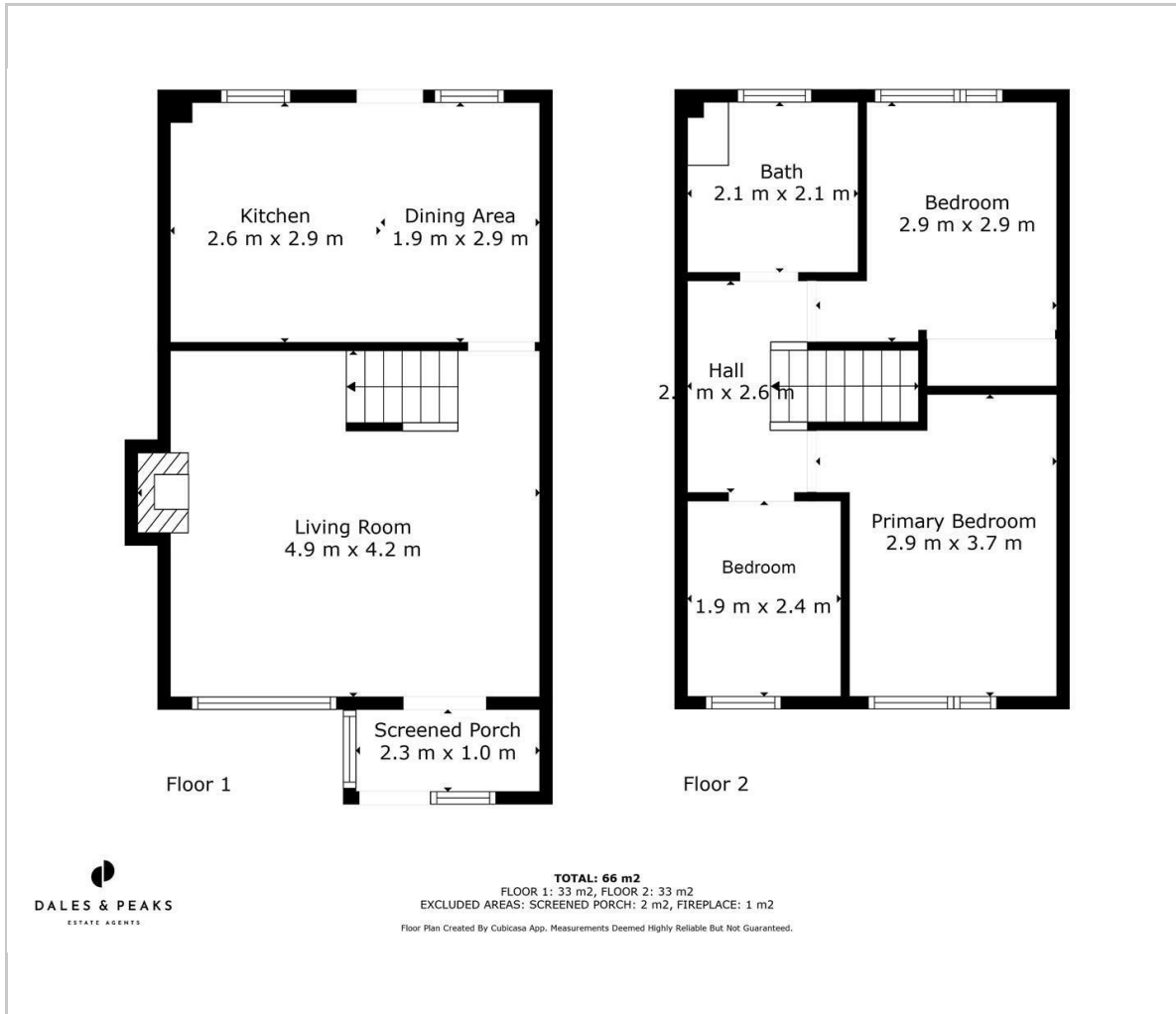
<http://www.dalesandpeaks.co.uk/wp-content/uploads/2019/05/tenants-brochure-may-2019.pdf>

- * We are a member of the Propertymark Client Money Protection Scheme - propertymark.co.uk
- * We are a member of The Property Ombudsman Scheme - tpos.co.uk
- * We place all our deposits in the Deposit Protection Scheme DPS - depositprotection.com





Floor Plan

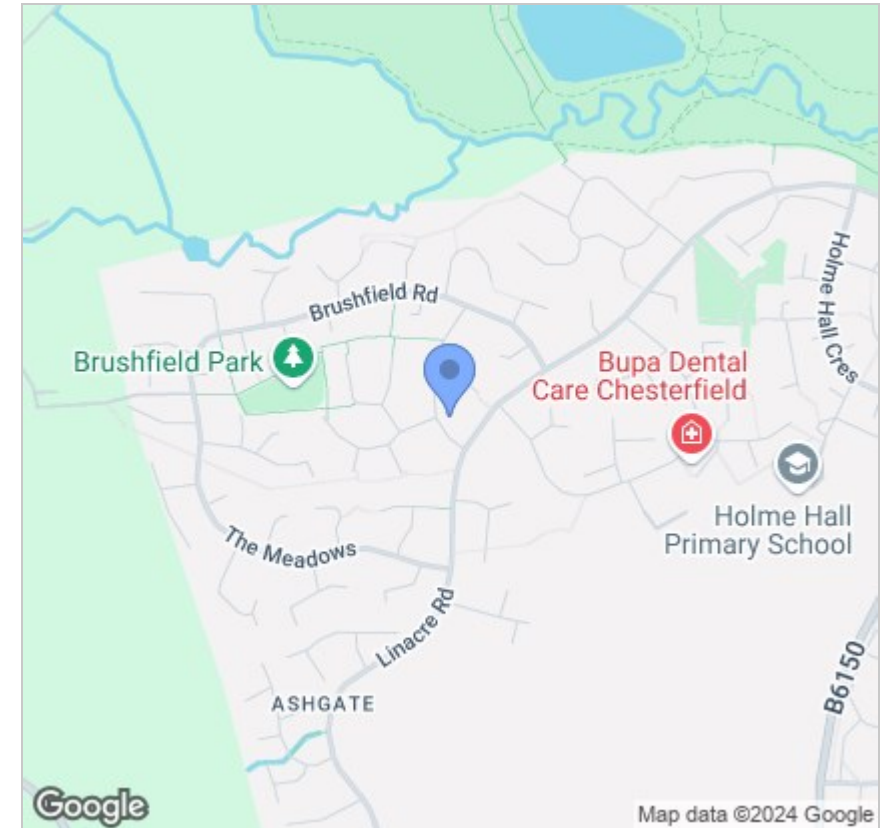


Viewing

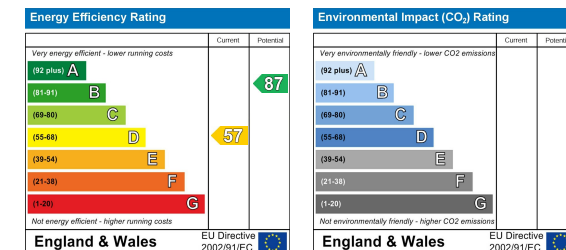
Please contact our Chesterfield Office on 01246 567540 if you wish to arrange a viewing appointment for this property or require further information.

These particulars, whilst believed to be accurate are set out as a general outline only for guidance and do not constitute any part of an offer or contract. Intending purchasers should not rely on them as statements of representation of fact, but must satisfy themselves by inspection or otherwise as to their accuracy. No person in this firm's employment has the authority to make or give any representation or warranty in respect of the property.

Area Map



Energy Efficiency Graph



131 Chatsworth Road, Chesterfield, Derbyshire, S40 2AP
T: 01246 567540



E: info@dalesandpeaks.co.uk
www.dalesandpeaks.co.uk