



105 Loads Road, Holymoorside

Holymoorside, S42 7HW

Guide Price £205,000



105 Loads Road,
Holymoorside, S42 7HW

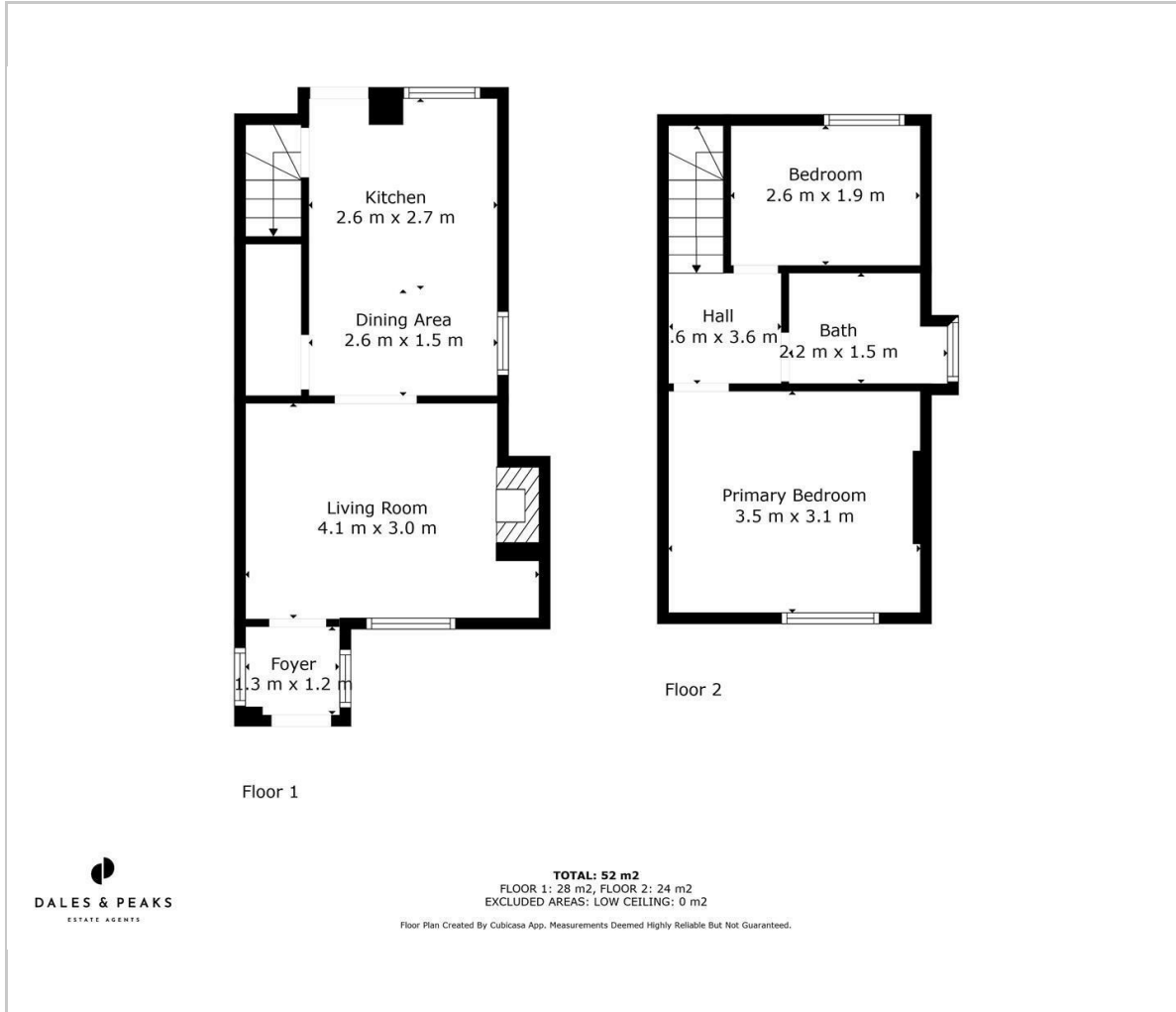
GUIDE PRICE £205,000 - £210,000.

A charming two bedroom stone cottage located in the picturesque and popular village of Holymoorside. Locally known as Wasp Nest Cottages, this end cottage is unique that it has off road parking. The property offers 560 sqft of accommodation which comprises of a cosy living area which has a feature stone and brick fireplace with log burning stove. There is a spacious dining kitchen which overlooks the rear garden. To the first floor there are two bedrooms and family bathroom. Private rear south facing garden. An opportunity to have a quintessential village lifestyle with easy access to local amenities and beautiful countryside surroundings.

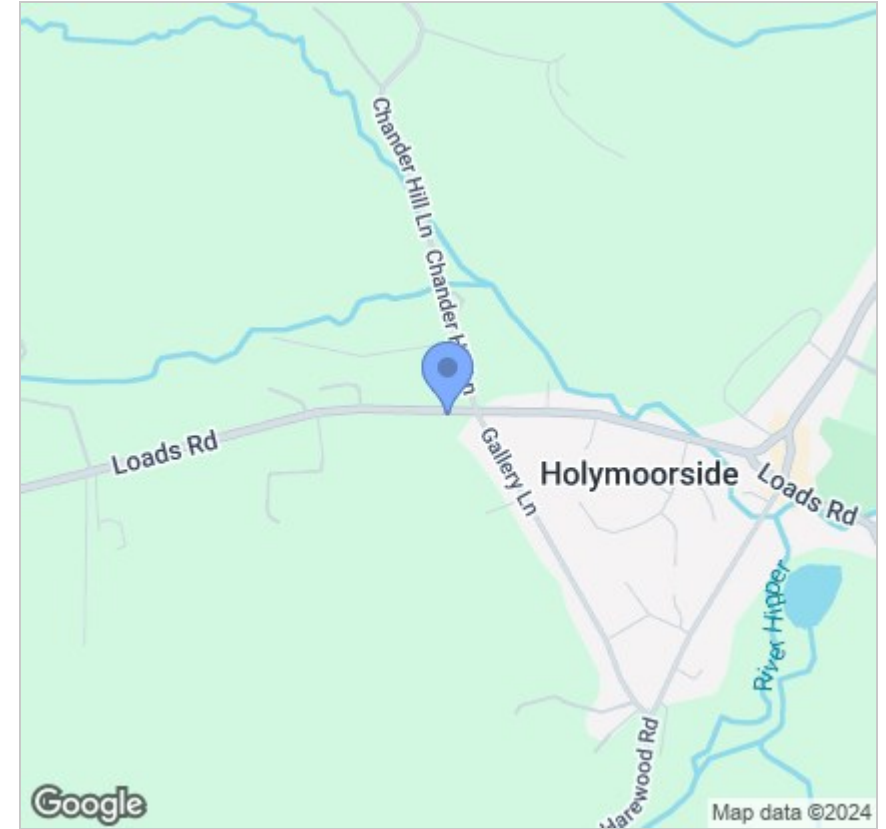




Floor Plan



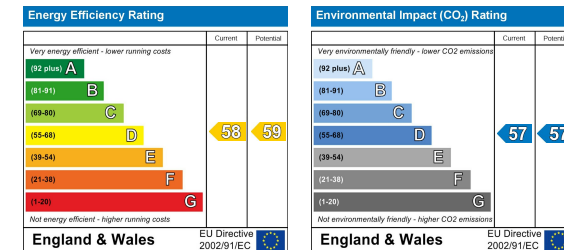
Area Map



Viewing

Please contact our Chesterfield Office on 01246 567540 if you wish to arrange a viewing appointment for this property or require further information.

Energy Efficiency Graph



These particulars, whilst believed to be accurate are set out as a general outline only for guidance and do not constitute any part of an offer or contract. Intending purchasers should not rely on them as statements of representation of fact, but must satisfy themselves by inspection or otherwise as to their accuracy. No person in this firm's employment has the authority to make or give any representation or warranty in respect of the property.



131 Chatsworth Road, Chesterfield, Derbyshire, S40 2AP
 T: 01246 567540

E: info@dalesandpeaks.co.uk
 www.dalesandpeaks.co.uk