



The Old Stables Chesterfield Road

Matlock Moor, Matlock, DE4 5LZ

£1,800 PCM



The Old Stables

Matlock Moor, Matlock, DE4 5LZ

A well-presented, two bedroom stone built house located in a quiet and private location within a short drive of Matlock town centre.

The property briefly comprises; modern kitchen diner with breakfast bar, lounge with log burner, two bedroom with the master benefiting from an en-suite, separate utility room and bathroom with shower over bath.

Please note that the water, electricity, broadband and sky are paid directly to the agent at £250pcm. Council tax is paid separately.

Directions

The house is located on Cuckoostone Lane. Please drive all the way down and the house will be found at the end of the driveway.

For fee information please copy and paste the link below for our tenant brochure

<http://www.dalesandpeaks.co.uk/wp-content/uploads/2019/05/tenants-brochure-may-2019.pdf>

* We are a member of the Propertymark Client Money Protection Scheme - propertymark.co.uk

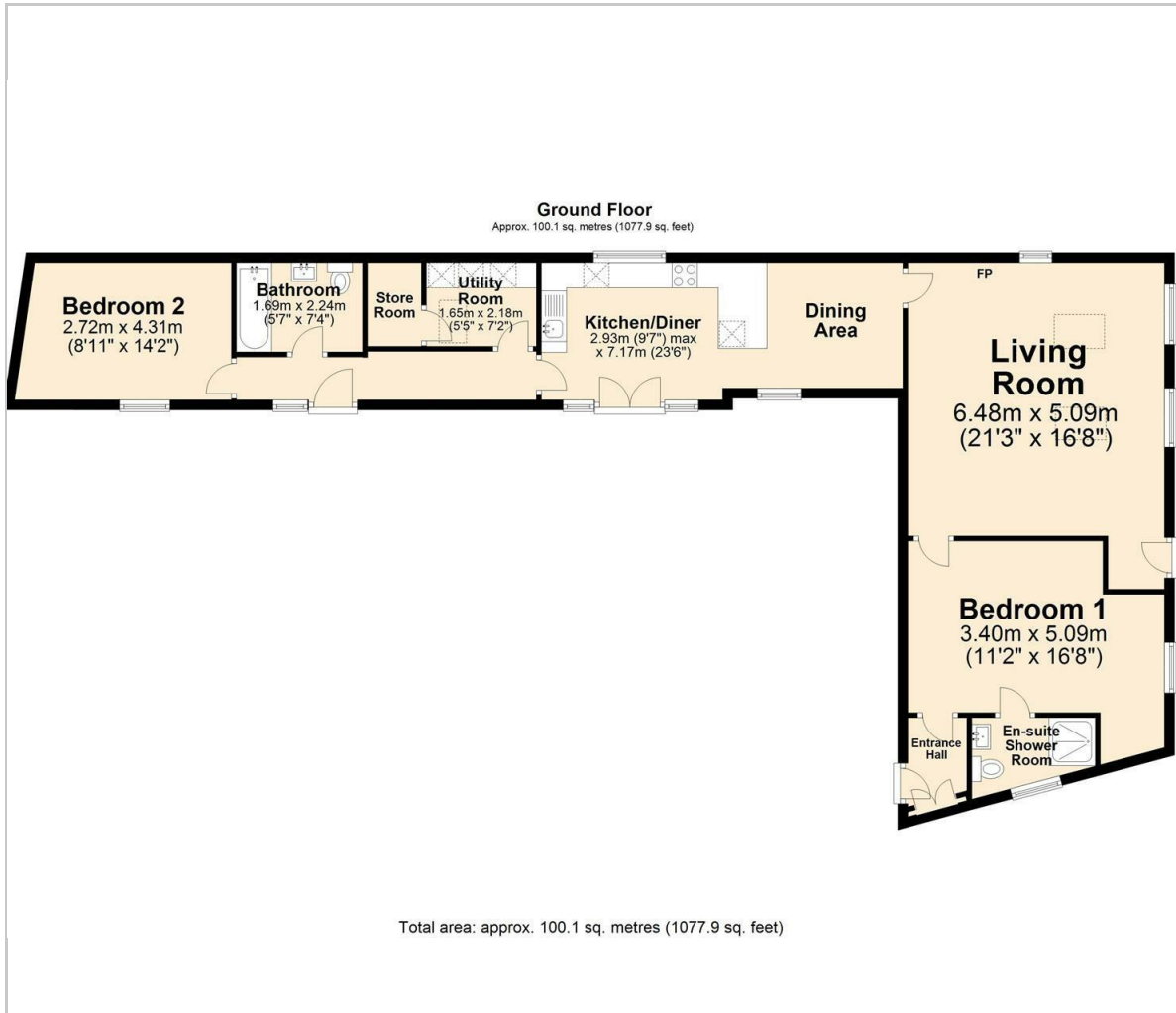
* We are a member of The Property Ombudsman Scheme - tpos.co.uk

* We place all our deposits in the Deposit Protection Scheme DPS - depositprotection.com

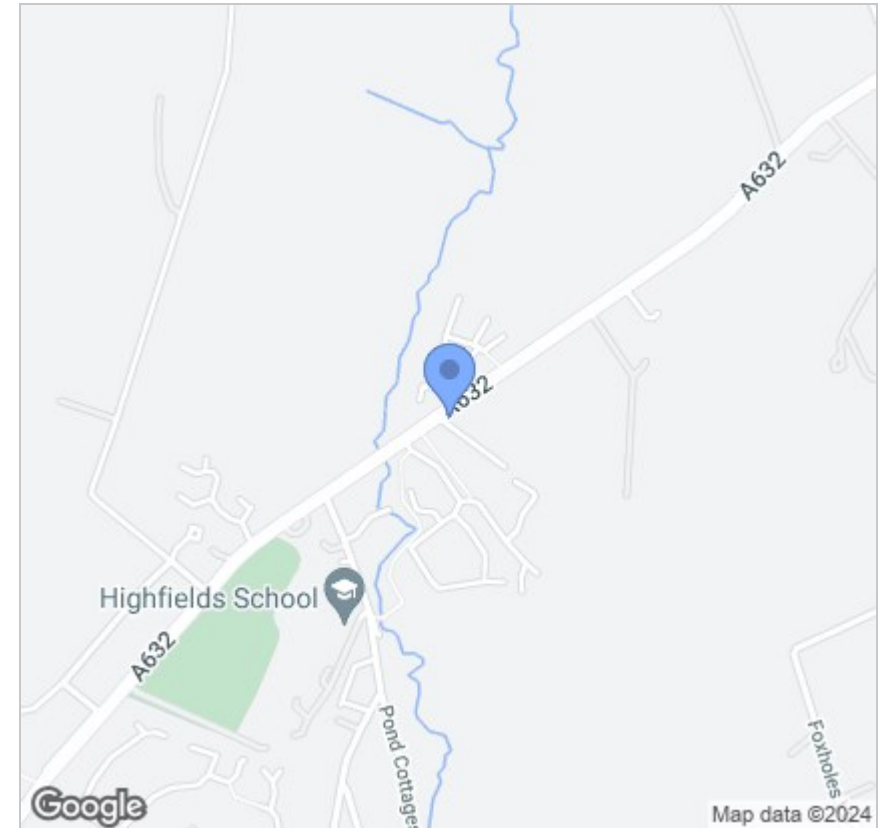




Floor Plan



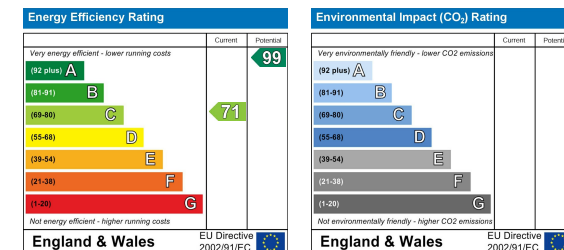
Area Map



Viewing

Please contact our Chesterfield Office on 01246 567540 if you wish to arrange a viewing appointment for this property or require further information.

Energy Efficiency Graph



These particulars, whilst believed to be accurate are set out as a general outline only for guidance and do not constitute any part of an offer or contract. Intending purchasers should not rely on them as statements of representation of fact, but must satisfy themselves by inspection or otherwise as to their accuracy. No person in this firm's employment has the authority to make or give any representation or warranty in respect of the property.



131 Chatsworth Road, Chesterfield, Derbyshire, S40 2AP
T: 01246 567540

E: info@dalesandpeaks.co.uk
www.dalesandpeaks.co.uk