

9 Bridge View
Milford, Belper, DE56 0RG
Guide Price £290,000



9 Bridge View

Milford, Belper, DE56 0RG

£290,000 - £295,000 (Guide price)
Charming, deceptively spacious and styled to encapsulate the design features synonymous of the home's era, whilst effortlessly blending contemporary, modern day luxuries desired by today's standard. Welcome to 9 Bridge View, an elegantly presented 3 double bedroom period townhouse, enjoying picture perfect views of rolling hills to the front and open fields to the rear.

Offering 1033 sqft of accommodation over 3 storeys, the property features a tranquil lounge with alcove storage, scenic views and log burning stove, a modern contrast dining kitchen with highly specified integrated appliances, very spacious and individually styled bedrooms, a beautifully styled bathroom and a generous rear garden with social patio areas, a summer house and open field views

The ground floor comprises; entrance hallway, family lounge with log burning stove, modern dining kitchen with access to the rear garden and hi-spec integrated appliances.

The first floor comprises; stylish bathroom with bath and overhead shower, separate WC, 2 spacious double bedrooms.

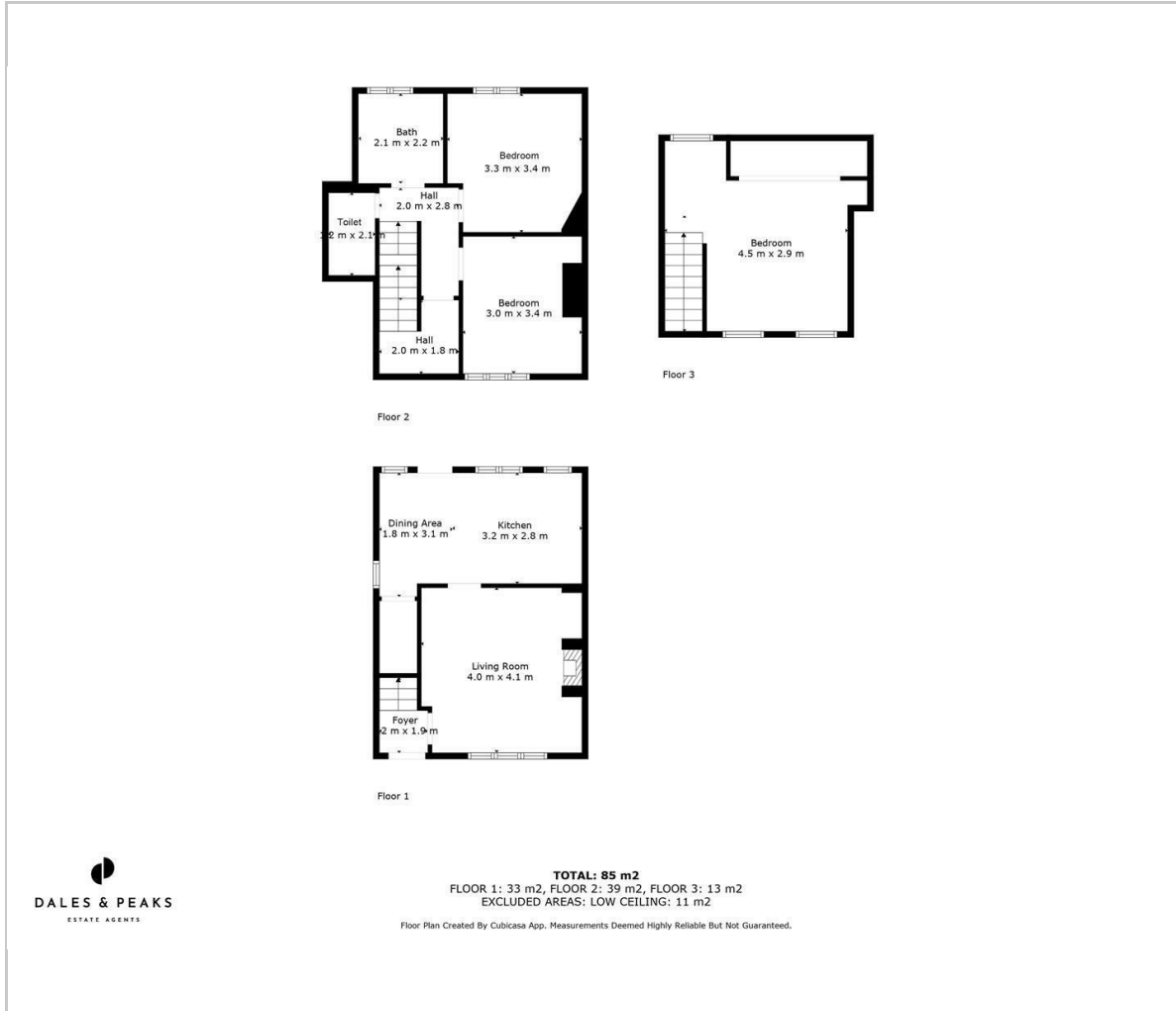
The second floor comprises; a further large double bedroom with ample storage into the eaves.

**Dales & Peaks ForwardMove
please read**





Floor Plan



Viewing

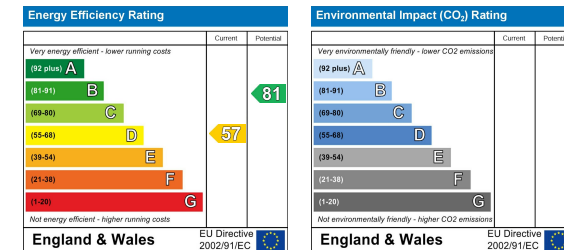
Please contact our Chesterfield Office on 01246 567540 if you wish to arrange a viewing appointment for this property or require further information.

These particulars, whilst believed to be accurate are set out as a general outline only for guidance and do not constitute any part of an offer or contract. Intending purchasers should not rely on them as statements of representation of fact, but must satisfy themselves by inspection or otherwise as to their accuracy. No person in this firm's employment has the authority to make or give any representation or warranty in respect of the property.

Area Map



Energy Efficiency Graph



131 Chatsworth Road, Chesterfield, Derbyshire, S40 2AP
 T: 01246 567540



E: info@dalesandpeaks.co.uk
 www.dalesandpeaks.co.uk