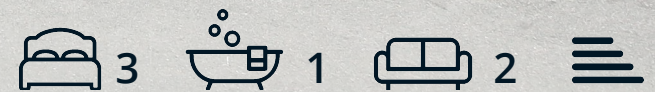




16 Central Street
, Chesterfield, S41 0SE

Guide Price £180,000



16 Central Street

, Chesterfield, S41 0SE

£180,000 - £190,000 (Guide price) A beautifully styled and deceptively spacious 3 bedroom semi detached home, situated in the desirable Chesterfield suburb of Hasland. Redesigned throughout 16 Central Drive enjoys modern and tasteful interior decor and sits within close proximity of Chesterfield Town Centre, local amenities and transport links. Offering a spacious 1164 sqft of accommodation over 3 storeys, the property features 2 reception rooms, a contemporary kitchen with integrated appliances, modern bathroom with separate bath and shower, spacious and individually decorated bedrooms and a low maintenance garden to the rear.

The ground floor comprises; entrance hallway, family lounge with feature fireplace, formal dining room, contemporary kitchen with integrated oven, electric hob, dishwasher and ample storage.

The first floor comprises; 2 double bedrooms and the modern family bathroom with separate bath and shower.

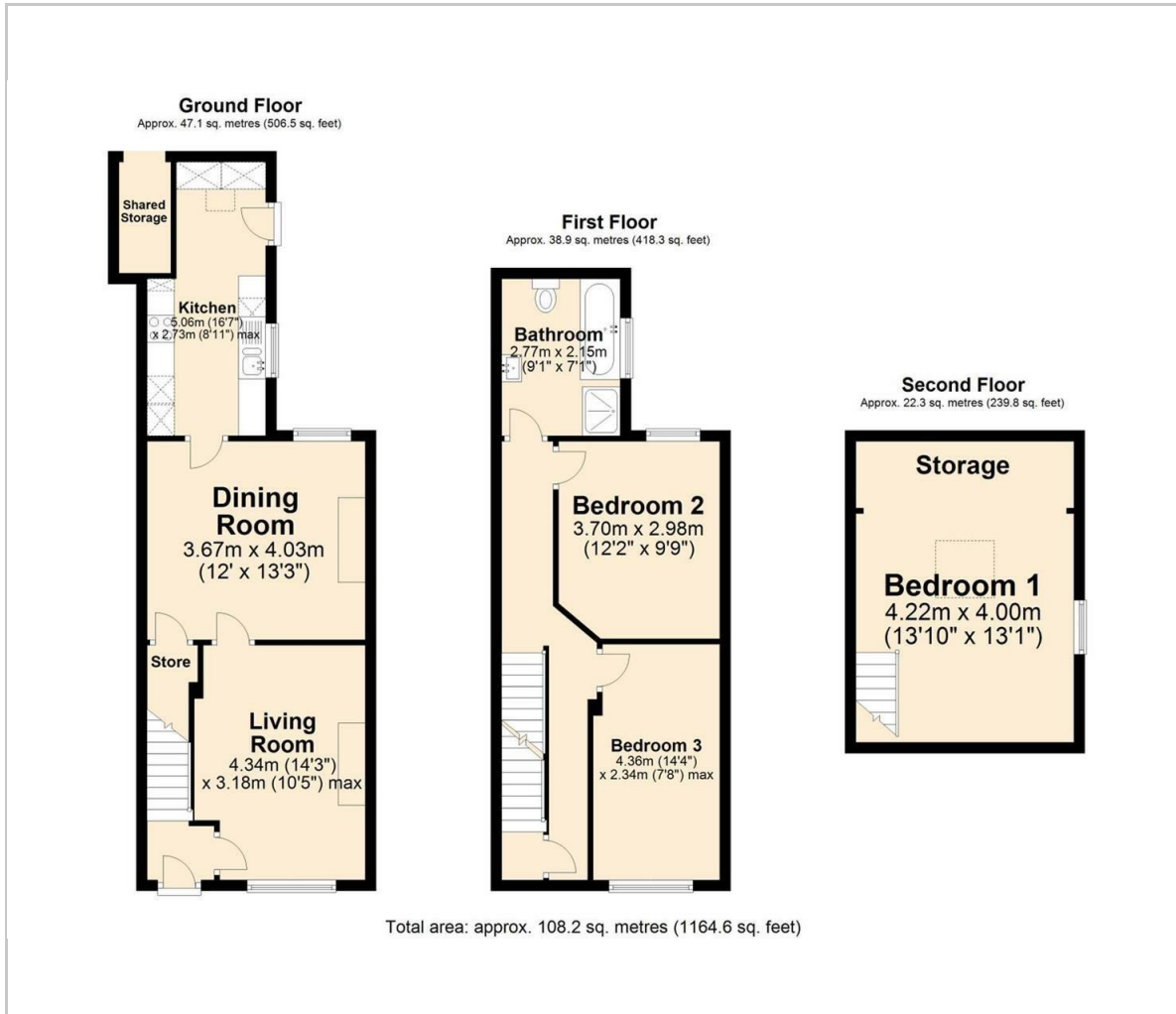
The second floor comprises; a further spacious double bedrooms with eaves storage.

**Dales & Peaks ForwardMove
please read**





Floor Plan

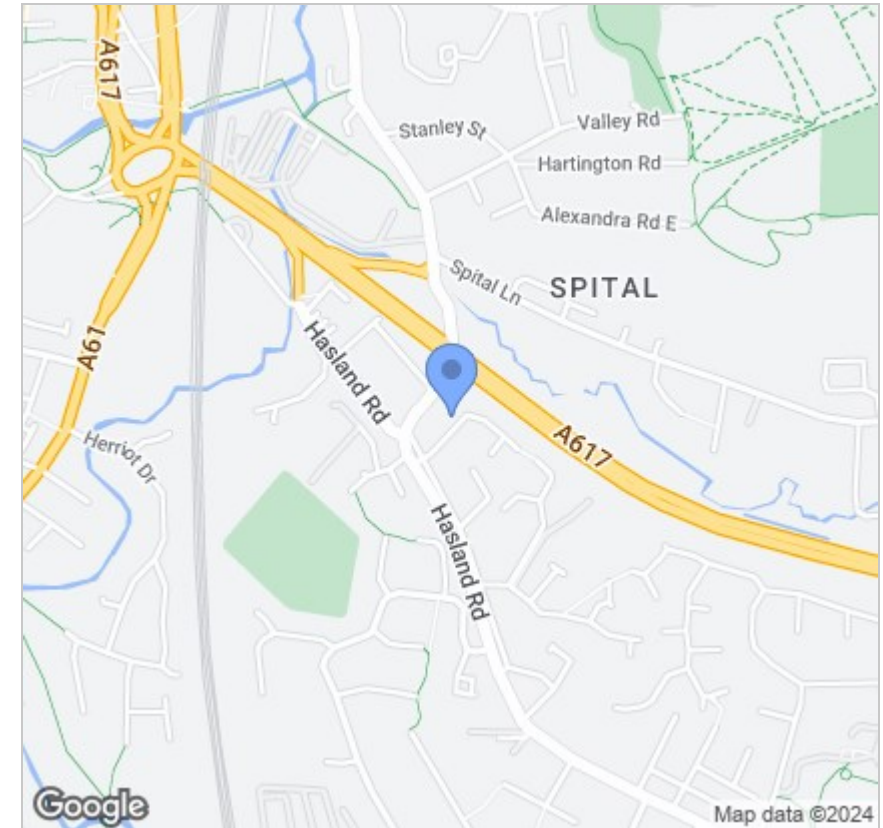


Viewing

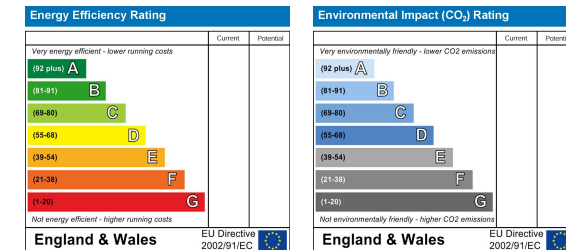
Please contact our Chesterfield Office on 01246 567540 if you wish to arrange a viewing appointment for this property or require further information.

These particulars, whilst believed to be accurate are set out as a general outline only for guidance and do not constitute any part of an offer or contract. Intending purchasers should not rely on them as statements of representation of fact, but must satisfy themselves by inspection or otherwise as to their accuracy. No person in this firm's employment has the authority to make or give any representation or warranty in respect of the property.

Area Map



Energy Efficiency Graph



131 Chatsworth Road, Chesterfield, Derbyshire, S40 2AP
T: 01246 567540



E: info@dalesandpeaks.co.uk
www.dalesandpeaks.co.uk